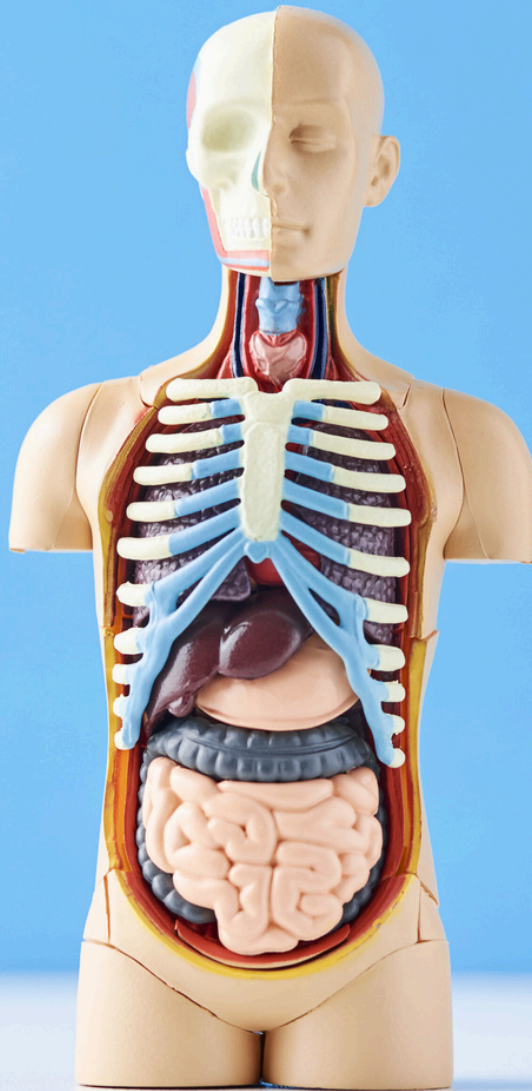


Entry to Medicine

For students & their families

2025



Entry to Medicine

For students & their families

A guide to medical programs in Australia and New Zealand for high school students and their families. Created by Study Work Grow Pty Ltd in 2025.

EDITION 7 | VERSION 1

The programs in this guide may be subject to change at any time. In our experience, programs may change at short notice, and you should always check directly with the provider before applying for medical programs. We have verified the information in this guide, but in some cases the information may differ from that provided on third party websites or printed material.

SCHOOL-LICENSED EDITION (APPROVED FOR SHARING WITHIN A SCHOOL)

In this guide...

The basics of studying medicine

Your study options

The assessment process

The UCAT

Creating a Plan B

Understanding fees & places

Key dates

Direct entry programs

Separate entry programs

Postgraduate programs



The basics of studying medicine

IT CAN BE VERY COMPETITIVE

But don't let that stop you. We need lots of doctors (even more so than just a few years ago), so if you've done the work and are prepared, then you'll stand a good chance.

PREPARING YOUR APPLICATION CAN TAKE TIME

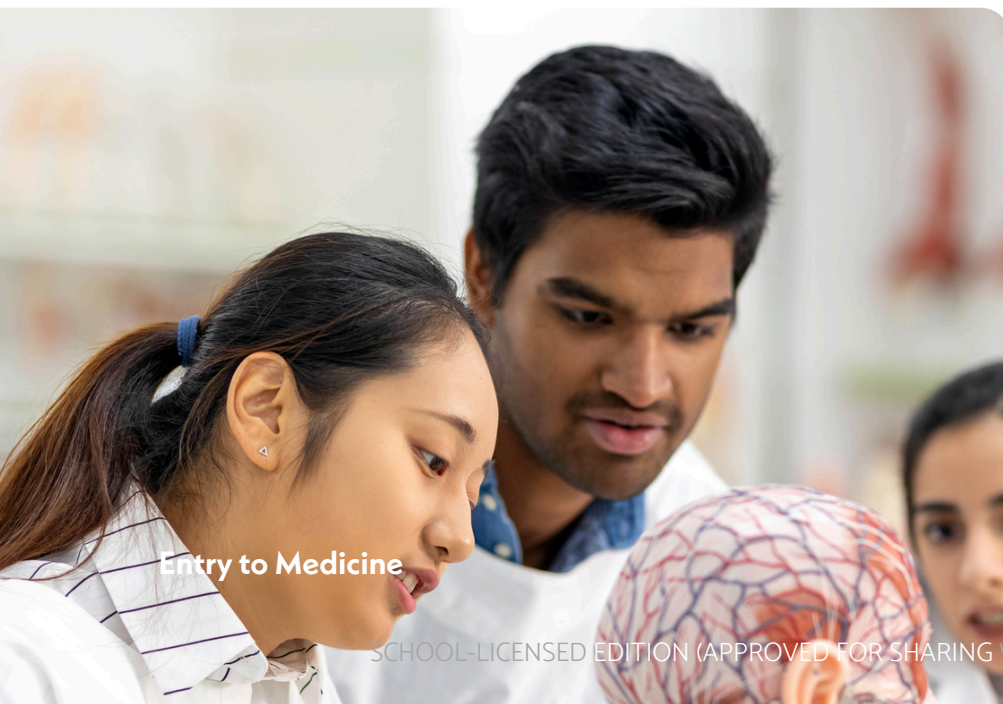
If you're in Year 12 now, then you need to get your preparation underway fast. If you're in Year 10 or 11, start thinking about it now so there's not as much to prepare in Year 12.

You can expect to undergo testing, interviews, submit essays, and more, all on top of the normal university application process.

YOUR DEGREE IS JUST THE FIRST STEP

Graduating from a medical program is great, but you'll still need to undergo years of training before you can practice on real patients without supervision. Medical school is followed by an Internship (usually one year), then a Residency of one or more years.

After that there's even more training, experience, and exams - you could also do your Fellowship and/or PhD and become a qualified GP, Physician, Surgeon, or Specialist.





Common terms and abbreviations

MBBS

Bachelor of Medicine, Bachelor of Surgery.
This is the title of the primary degree conferred upon graduates of many medical programs in Australia and NZ.

MD

Doctor of Medicine.

MChD

Doctor of Medicine and Surgery.

UCAT

The University Clinical Aptitude Test.

MMI

Multiple Mini Interview.

Casper

Computer Based Assessment for Sampling
Personal Characteristics.

GAMSAT

Graduate Australian Medical School
Admissions Test.

GEMSAS

Graduate Entry Medical School Admission
System.

ATAR

Australian Tertiary Admission Rank.

NCEA

National Certificate of Educational
Achievement.

Your study options

While they may have slightly different names, all medical degrees offered by approved medical schools are equivalent for the purposes of commencing practice as a doctor.

This means that it doesn't matter which school you graduate from, or whether you graduate with an MBBS (Bachelor of Medicine, Bachelor of Surgery) or a Doctor of Medicine (MD or MChD), you will be qualified to start your internship.

Completing an approved degree in Australia will also allow you to qualify for registration in New Zealand, and vice versa.

YOUR FIRST OPTION...

Is to commence one of the 5 to 7-year undergraduate entry or combined degrees once you finish school. There are currently 22 programs in Australia and 2 in NZ that offer this direct option.

If you don't make it into one of these programs (and remember, there are limited places), don't worry - you can still become a doctor.

THE SECOND PATHWAY...

Is to complete any undergraduate degree, then apply for a postgraduate medical program. Your first degree could be in any field, depending on the requirements of the postgrad program you're considering.

This pathway also allows you to try out other careers before committing to medicine, and have a Plan B to fall back on.

The pathway to becoming a doctor



The assessment process

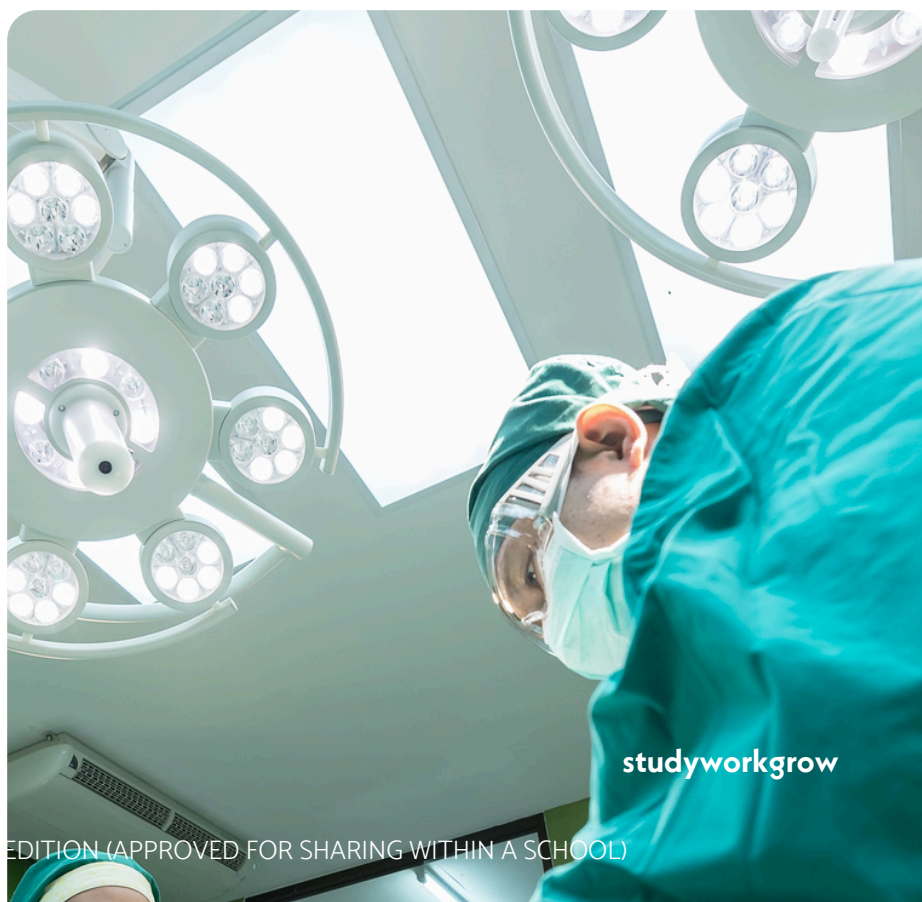
The assessment process is different for undergraduate programs and postgraduate programs, and we mainly focus on undergraduate programs in this guide.

There are different components used by each university, and each of these has a different weighting in their individual assessment process.

Understanding the assessment process is vital for success, so once you've chosen some potential programs, do your research and learn about each component they use and what you need to do.

Some of the programs require you to apply directly to the university as well as (or instead of) applying through your state's Tertiary Admissions Centre, and there are a range of deadlines. Other programs wait for results release day and then invite applicants for interviews in December and January.

Be aware that application deadlines may be different for medicine, and you may not be able to apply or change your preferences after the on-time application deadline.





ALL DIRECT-ENTRY PROGRAMS REQUIRE AN ATAR OR NCEA SCORE

The minimum requirements vary between programs. The lowest score to actually receive an offer may be higher than the posted minimum requirements, depending on the quality of the applicants and other factors.

18 OF THE PROGRAMS REQUIRE A UCAT SCORE

You'll need to register to sit the UCAT in the year before you want to start your degree. Read more about the UCAT on the next page.

19 OF THE PROGRAMS ASK YOU TO ATTEND AN INTERVIEW

Usually these interviews are in the form of a Multiple Mini Interview, but the structure and questions can vary.

THERE CAN BE OTHER REQUIREMENTS TOO

You may also need to participate in other testing, like the Casper Test or psychometric testing. Some programs require you to submit an essay, statement, or portfolio as well.

The UCAT

Some of the programs require you to sit the University Clinical Aptitude Test (or UCAT) before you can apply. So what exactly is the UCAT?

Basically, it's a test that determines whether or not you have the right abilities and qualities to work as a doctor. Your UCAT results are used in combination with your academic results (and occasionally other test results) to determine whether you'll progress to the next stage of applications (usually the interview stage) or receive an offer.

The test runs for two hours and is computer-based. In 2025, there are four sections to the UCAT:

- Verbal Reasoning
- Decision Making
- Quantitative Reasoning
- Situational Judgement

Make sure you read the entry requirements for any course you're interested in to see if you'll need to take the UCAT, as you will need to sit it before applications close.

UCAT 2025 KEY DATES

- 4 March** - Bookings open
- 9 May** - Concession application deadline
- 16 May** - Booking deadline
- 30 May** - Late booking deadline
- 6 June** - Final late booking deadline
- 11 June** - Cancellation deadline
- 1 July** - Testing begins
- 5 August** - Last testing date
- Early September** - Results delivered

Creating a Plan B

You're probably not going to want to hear this, but every year students with brilliant school results, UCAT scores, and application essays miss out on getting into medicine.

Some of the programs have thousands of applicants for a handful of spots. Take the University of Sydney for example - they receive thousands of applicants each year for just 30 places. You can do everything right, and still not get in this time around. Which is why having a Plan B is a great idea.

Your Plan B will most likely be an alternative path to medicine, such as through a graduate program. But we also recommend that your Plan B includes career options other than 'doctor', because there are so many more amazing careers out there to explore.

Luckily, many graduate medical programs (i.e. ones you can only get into once you already have a degree) don't put limits on the type of degree you can have. This means that you can apply with a Bachelor of Medical Science, Nursing, Physiotherapy, Accounting, or IT.

Should you choose a Bachelor of Medical Science if you don't get in?

Many students who don't get in choose a Bachelor of Medical Science, but these courses are often filled with highly talented students who also just missed out on medicine. This could make it harder to get a good GPA, and there are often limited career prospects for graduates should you not eventually get into a graduate medical program.

So, you should also consider something other than Medical Science for your undergraduate degree if there's something else you're interested in. That way, you'll have a solid backup career option with good job prospects, just in case you don't get into medicine.

Understanding fees and places

There are three types of places for domestic medical students in Australia: Commonwealth Supported Places (CSPs), Bonded Places (BPs), and Full Fee-Paying Places (FFPs).

Public universities are usually not able to offer FFPs for domestic undergraduate students, so this means that as a domestic undergraduate student you generally won't be able to access a FFP, other than at a private university (such as Bond) or in a postgraduate degree with no CSP allocations (such as Macquarie).

It's also worth considering that the Australian Government has guaranteed an internship place for all graduates with a CSP or bonded place, so if you graduate from one of these programs, you'll be well on your way to working as a doctor.

In New Zealand, each university sets their fees individually. There are only two kinds of places: domestic and international.

COMMONWEALTH SUPPORTED PLACES

These are places where the government pays part of your fees. It won't cover all of the fees, but it will cover a lot of them and you don't have to pay it back. You could also get a loan to cover the remaining fees (called a HECS-HELP loan).

To get one of these places you need to be eligible, which means you need to be an Australian citizen. Some people from New Zealand or on Permanent Visas can also be eligible depending on other criteria.

BONDED PLACES

28.5% of all CSPs are now required to also be bonded places. They are designed to encourage more graduates to work in regional or rural areas.

If you agree to the bonded place, you will need to work in a regional, rural, or remote location for a period of 3 years within 18 years of finishing your degree. If you don't, you may have to pay back the subsidised portion of your course fees on top of what you already owe or have paid.

Bonded places are usually offered once all unbonded places have been filled.

FULL FEE PAYING PLACES

In some rare circumstances, you may be offered a full-fee paying place.

Medical programs offered by private universities or universities that don't receive government funding make some or all places full-fee paying.

If you are offered an FFP, the total cost of your degree will typically be higher than if you were offered a CSP - but you are still eligible for a HELP loan to temporarily cover the cost.

Check with your chosen university for their individual fee program before you enrol.

DOMESTIC FEES IN NEW ZEALAND

In NZ, the government subsidises the fees of domestic students, so you will generally pay a lower rate than international students.

Domestic students include:

- NZ citizens and permanent residents
- Australian citizens and permanent residents

HECS AND FEE-HELP

HELP is a loan scheme from the Australian government that you can use to pay for your university fees. HECS-HELP is available to students in CSPs, while FEE-HELP is available to students in FFPs.

The HELP loan limit for medical students is \$182,172 (as of March 2025). The limit is combined between all HELP loans, so if you need to study more than one course, they all count towards the same limit.

Once you start earning over \$54,435 before tax each year (as of March 2025), part of your wage will automatically be taken by the government to start repaying your HELP debt.

STUDENT LOANS

New Zealand citizens can apply for a Student Loan to help cover the cost of their course fees.

The maximum you can get (as of March 2025) is \$35,000 per 1 EFTS (about 120 points or credits).

Once you start earning over \$24,128 before tax each year (as of March 2025), part of your wage will automatically be taken by the government to start repaying your Student Loan.

Closing dates

The majority of undergraduate (school-leaver) programs close on the same day as general state-based university applications (i.e. through UAC, or VTAC etc.). This is normally around the end of September. Some programs have not finalised their application dates yet, but we will be updating this guide throughout the year.

Programs with direct application options may have dates which open earlier and close later, but as the universities may change these dates at their discretion we recommend checking directly with the university when you go to apply.

UCAT ANZ

Closes - 16 May 2025

Testing begins - 1 July 2025

CQUniversity & UQ

Min ATAR - 95

Closes - 30 September 2025

Adelaide University

Min ATAR - 90

Closes - 30 September 2025

Curtin

Min ATAR - 95

Closes - 30 September 2025

ANU

Min ATAR - 90-99

Closes - 10 April 2025 (Tuckwell only)

Flinders

Min ATAR - 95

Closes - TBC

Auckland

Min NESA Score - 250-280

Closes - TBC

Griffith

Min ATAR - 99.80

Closes - 30 December 2025

Bond

Min ATAR - 95

Closes - TBC

JCU

Min ATAR - 91.65

Closes - 30 September 2025

CDU

Min ATAR - 90

Closes - TBC

La Trobe & Uni Melb

Min ATAR - 80

Closes - 7 November 2025

Monash

Min ATAR - 92.15

Closes - 29 September 2025

Newcastle & UNE

Min ATAR - 94.30

Closes - 30 September 2025

Notre Dame

Min ATAR - 92

Closes - 30 September 2025

Otago

Min NESA Score - 140

Closes - 10 December 2025

Uni Melb

Min ATAR - 99.90

Closes - 5 December 2025

UNSW

Min ATAR - 96

Closes - 30 September 2025

UQ

Min ATAR - 95

Closes - 30 September 2025

UniSQ

Min ATAR - 95

Closes - TBC

UniSC & Griffith

Min ATAR - 99.80

Closes - TBC

University of Sydney

Min ATAR - 99.95

Closes - 30 September 2025

UTAS

Min ATAR - 95

Closes - 30 September 2025

UWA

Min ATAR - 98

Closes - 30 September 2025

WSU & Charles Sturt

Min ATAR - 95.50

Closes - 25 September 2025



Direct entry programs

New South Wales

Victoria

Queensland

South Australia

Western Australia

Australian Capital Territory

Northern Territory

Tasmania

New Zealand

These programs are designed for school-leavers and give you the skills and knowledge you need to become an intern.

Entry to Medicine

SCHOOL-LICENSED EDITION (APPROVED FOR SHARING WITHIN A SCHOOL)



studyworkgrow

University of New South Wales

Bachelor of Medical Studies & Doctor of Medicine

The Bachelor of Medical Studies and Doctor of Medicine at UNSW is the most popular first preference choice in the state for school leavers.

How to apply

- Sit the UCAT in Year 12
- Apply through UAC
- Apply via UNSW's Medicine Application Portal
- Attend an interview if invited

Entry schemes

- [Gateway Entry Scheme](#)
- [Lateral Entry Scheme](#)
- [Rural Entry Scheme](#)
- [Indigenous Entry Scheme](#)

Prerequisite subjects

- English

Find out more here

ATAR

96

Duration

6 years

Places

198

Interview

Yes

UCAT

Yes

Closing date

30 September

Cost

\$75,500 total

Locations

Sydney

University of Newcastle & University of New England

Joint Medical Program

The Joint Medical Program is run by the University of Newcastle and the University of New England, allowing you to launch your medical career in regional areas.

How to apply

- Sit the UCAT in Year 12
- Apply directly to Newcastle or UNE
- Apply through UAC
- Attend an assessment interview if invited

Entry schemes

- [Rural and Remote Admissions Scheme](#)
- [Miroma Bunbilla Program](#)
- [Biomedical Science Pathway](#)
- [Excellence through Equity Pathway to Medicine](#)

Prerequisite subjects

- None

[Find out more here](#)

ATAR

94.30

Duration

5 years

Places

170

Interview

Yes

UCAT

Yes

Closing date

30 September

Cost

\$13,200 per year

Locations

Newcastle
Armidale
Central Coast

University of Notre Dame

Bachelor of Biomedical Science (Assured Pathway) & Doctor of Medicine

This program offers a pathway for aspiring doctors into Notre Dame's Doctor of Medicine.

ATAR

92

How to apply

- Sit the UCAT in Year 12
- Apply through UAC
- Attend an interview if invited
- Maintain a minimum GPA of 2.5 in the Bachelor of Biomedical Science to progress to the MD

Duration

7 years

Places

40

Interview

Yes

Entry schemes

- [Priority Pathway](#)

UCAT

Yes

Prerequisite subjects

- None

Closing date

30 September

[Find out more here](#)

Cost

\$9,314 - \$13,241 per year

Locations

Sydney
Fremantle

University of Sydney

Bachelor of Arts / Bachelor of Science & Doctor of Medicine

The University of Sydney allows school leavers who have achieved exceptional results to study a 3-year undergraduate science or arts degree followed by the 4-year Doctor of Medicine.

How to apply

- Apply through UAC
- Attend an online assessment process and panel discussion if invited

Entry schemes

- [Indigenous Pathways](#)
- [Regional and Remote Entry Scheme](#)
- [MySydney Entry Scheme](#)

Prerequisite subjects

- None

Find out more here

ATAR

99.95

Duration

7 years

Places

30 (domestic)

10 (international)

Interview

Yes

UCAT

No

Closing date

30 September

Cost

\$10,409 - \$16,992 per year

Locations

Sydney

Western Sydney University & Charles Sturt University

Joint Program in Medicine

The Joint Program in Medicine allows you to complete your medical training straight out of high school, either in Western Sydney or Orange.

How to apply

- Sit the UCAT in Year 12
- Apply through UAC
- Attend an online assessment process and panel discussion if invited

Entry schemes

- [Aboriginal and Torres Strait Islander Applicants](#)
- [Rural Entry Admission Scheme](#)
- Applicants from Greater Western Sydney only need an ATAR of 93.5 to meet the academic threshold

Prerequisite subjects

- None

Find out more here

ATAR

95.50

Duration

5 years

Places

120

Interview

Yes

UCAT

Yes

Closing date

25 September

Cost

\$13,241 per year

Locations

Western Sydney
Orange

La Trobe University & University of Melbourne

Bachelor of Biomedical Science (Medicine) & Doctor of Medicine

La Trobe's Bachelor of Biomedical Science (Medicine) provides a guaranteed pathway into the University of Melbourne's Doctor of Medicine (Rural Pathway).

ATAR

80

Duration

7 years

Places

N/A

Interview

Yes

How to apply

- Apply through VTAC
- Attend an interview if invited
- Complete the Bachelor of Biomedical Science with a minimum WAM of 70 to progress to the MD

Entry schemes

- [Special Entry Access Scheme](#)
- Regional ATAR Adjustment
- [Aspire Programs](#)

UCAT

No

Closing date

7 November

Prerequisite subjects

- English

Cost

\$9,727 - \$13,241 per year

Find out more here

Locations

Albury-Wodonga
Bendigo

Monash University

Bachelor of Medical Science & Doctor of Medicine

Monash's Bachelor of Medical Science and Doctor of Medicine provides direct entry from high school. The first 2 years are campus based and the final 3 years are hospital and community based.

How to apply

- Sit the UCAT in Year 12
- Apply through VTAC
- Attend an interview if invited

Entry schemes

- [Indigenous Entry Scheme](#)
- [Special Entry Access Scheme](#)
- [Dean's Rural List](#)
- [Extended Rural Cohort](#)

Prerequisite subjects

- English
- Chemistry

Find out more here

ATAR

93.55

Duration

5 years

Places

234

Interview

Yes

UCAT

Yes

Closing date

29 September

Cost

\$13,500 per year

Locations

Melbourne

University of Melbourne

Doctor of Medicine - Guaranteed Pathways

Receive an ATAR of 99.90 and apply through the [Chancellor's Scholars Program](#), OR receive an ATAR between 99 and 99.85 and complete your undergraduate course with a WAM of 75 or higher to receive [guaranteed entry](#) to the MD.

How to apply

- Apply through VTAC
- Complete your undergraduate degree
- Attend an interview for entry to the MD

Entry schemes

- [Standard Entry](#).

Prerequisite subjects

- English
- Mathematics (for Agriculture/Biomedicine/Science degrees)
- One of Biology, Chemistry OR Physics (for Science degrees)
- Chemistry (for Biomedicine degrees)

[Find out more here](#)

ATAR

99

Duration

7 years

Places

355

Interview

Yes

UCAT

No

Closing date

5 December

Cost

\$13,500 per year

Locations

Melbourne

Bond University

The Medical Program

Due to Bond's tri-semester structure, graduating students will have the advantage of entering the workforce as a Doctor in only 14 semesters.

How to apply

- Apply through QTAC
- Attend psychometric testing and an interview if invited

Entry schemes

- Bachelor of Biomedical Science (Pre-Health Professional Major) lateral entry

Prerequisite subjects

- English

Find out more here

ATAR

96

Duration

4 years

Places

180

Interview

Yes

UCAT

No

Closing date

TBC

Cost

\$32,630 per semester

Locations

Gold Coast

Central Queensland University & University of Queensland

Bachelor of Medical Science (Pathway to Medicine) & Doctor of Medicine

Designed for school leavers, CQUniversity provides a provisional entry pathway into UQ's regionally-based Doctor of Medicine.

How to apply

- Sit the UCAT in Year 12
- Apply through QTAC
- Attend an interview if invited
- Complete the Bachelor of Medical Science with a minimum GPA of 5.0 to progress to the MD

Entry schemes

- [Aboriginal and Torres Strait Islander Admission Pathway](#)

Prerequisite subjects

- English
- Mathematical Methods
- One of Biology, Chemistry OR Physics

[Find out more here](#)

ATAR

95

Duration

7 years

Places

60 (approx.)

Interview

Yes

UCAT

Yes

Closing date

30 September

Cost

\$10,763 per year

Locations

Bundaberg
Rockhampton

Griffith University

Bachelor of Medical Science & Doctor of Medicine

The Bachelor of Medical Science, designed for high-achieving school leavers, provides the opportunity to progress directly into the Doctor of Medicine.

How to apply

- Sit the UCAT in Year 12
- Apply through QTAC
- Complete the Bachelor of Medical Science with a minimum GPA of 5.5 to progress to the MD

Entry schemes

- [First Peoples Health Pathway](#)
- [Incremental Adjustments for the Bachelor of Medical Science](#)

Prerequisite subjects

- English
- Mathematical Methods
- One of Biology, Chemistry OR Physics

[Find out more here](#)

ATAR

99.90

Duration

6 years

Places

36

Interview

No

UCAT

Yes

Closing date

30 December

Cost

\$13,241 per year

Locations

Brisbane
Gold Coast

James Cook University

Bachelor of Medicine, Bachelor of Surgery

JCU's Bachelor of Medicine, Bachelor of Surgery is the only 6-year undergraduate medical course offered in Northern Queensland.

How to apply

- Apply through QTAC
- Apply direct to JCU
- Attend an interview if invited

Entry schemes

- [JCU Prep](#) (to meet prerequisites only)
- [Rural Access Scheme](#)
- [Indigenous Medicine Pathway](#)

Prerequisite subjects

- English
- Mathematical Methods
- Chemistry

Find out more here

ATAR

87.60

Duration

6 years

Places

200 (approx.)

Interview

Yes

UCAT

No

Closing date

30 September

Cost

\$13,241 per year

Locations

Cairns
Townsville

University of Queensland

Doctor of Medicine - Provisional Entry

UQ provides Provisional Entry for school leavers to their Doctor of Medicine.

How to apply

- Sit the UCAT in Year 12
- Apply through QTAC
- Attend an interview if invited
- Complete an undergraduate degree at UQ within the minimum specified time with a minimum GPA of 5.00 and any required prerequisite subjects to progress to the MD

Entry schemes

- [Aboriginal and Torres Strait Islander MD provisional entry](#)
- [Rural Access Scheme](#)
- [UQ Subject Incentive Scheme](#)

Prerequisite subjects

- English

[Find out more here](#)

ATAR

95

Duration

7 years

Places

275

Interview

Yes

UCAT

Yes

Closing date

30 September

Cost

\$13,241 per year

Locations

Brisbane

University of Southern Queensland & University of Queensland

Bachelor of Biomedical Sciences (Medicine Pathway) & Doctor of Medicine

UniSQ's Bachelor of Biomedical Sciences (Medicine Pathway) prepares you for entry to UQ's Doctor of Medicine.

How to apply

- Sit the UCAT in Year 12
- Apply through QTAC
- Attend an interview if invited
- Complete the Bachelor of Biomedical Sciences within 3 years with a minimum GPA of 5.00 to progress to the MD

Entry schemes

- [First Nations Applicants](#)
- [Subject Incentive Adjustment Scheme](#)
- [Rural Access Adjustment Scheme](#)

Prerequisite subjects

- English
- Mathematics

Find out more here

ATAR

95

Duration

7 years

Places

36 (approx.)

Interview

Yes

UCAT

Yes

Closing date

30 September

Cost

\$9,312 per year

Locations

Toowoomba

University of the Sunshine Coast & Griffith University

Bachelor of Medical Science & Doctor of Medicine

UniSC's Bachelor of Medical Science provides provisional direct entry (subject to entry requirements) to Griffith's MD.

ATAR

99.85

Duration

7 years

Places

20

Interview

No

UCAT

Yes

Closing date

TBC

Cost

\$9,312 per year

Locations

Sunshine Coast

How to apply

- Sit the UCAT in Year 12
- Apply through QTAC
- Complete the Bachelor of Medical Science with a minimum GPA of 5.5 to progress to the MD

Entry schemes

- [Rural Access Scheme](#)
- [Indigenous Health Admissions Pathway](#)
- [Regional Health Workforce Scheme](#)

Prerequisite subjects

- English

Find out more here

Adelaide University

Bachelor of Medical Studies & Doctor of Medicine

Graduates from Adelaide's Bachelor of Medical Studies are eligible to enter the Doctor of Medicine and continue the journey to becoming a medical practitioner.

How to apply

- Sit the UCAT in Year 12
- Apply through SATAC
- Attend an interview if invited
- Complete the Bachelor of Medical Studies to progress into the MD

Entry schemes

- [Aboriginal and Torres Strait Islander Pathway](#)
- [Rural Background Applicants](#)

Prerequisite subjects

- One of Biology, Chemistry OR Mathematical Methods

[Find out more here](#)

ATAR

90

Duration

6 years

Places

TBC

Interview

Yes

UCAT

Yes

Closing date

30 September

Cost

\$13,241 per year

Locations

Adelaide

Flinders University

Bachelor of Clinical Sciences, Doctor of Medicine

Flinders' double degree program enables school leavers without an undergraduate degree to pursue a career in medicine.

How to apply

- Sit the UCAT in Year 12
- Apply through SATAC
- Complete the Bachelor of Clinical Sciences with a minimum GPA of 5.0 to progress into the MD

Entry schemes

- Rural and remote sub-quotas
- Indigenous Admission Scheme

Prerequisite subjects

- None

Find out more here

ATAR

95

Duration

6 years

Places

60 (approx.)

Interview

No

UCAT

Yes

Closing date

TBC

Cost

\$13,241 per year

Locations

Adelaide

Curtin University

Bachelor of Medicine, Bachelor of Surgery

Curtin University offers the only undergraduate direct entry medical degree program in Western Australia.

How to apply

- Sit the UCAT and Casper Test in Year 12
- Apply through TISC
- Attend an interview if invited

Entry schemes

- [StepUp to Curtin](#)
- Rural Entry Pathway
- Aboriginal and Torres Strait Islander Entry Pathway
- [Indigenous Pre-Medicine and Health Sciences Enabling Course](#)

Prerequisite subjects

- Chemistry

Find out more here

ATAR

95

Duration

5 years

Places

110 (approx.)

Interview

Yes

UCAT

Yes

Closing date

30 September

Cost

\$10,300 per year

Locations

Perth

University of Western Australia

Medicine via Biomedicine (Specialised)

School leaver entry in the MD is conditional upon successful completion of UWA's Bachelor of Biomedicine (Specialised) with the Integrated Medical Sciences and Clinical Practice major.

How to apply

- Sit the UCAT in Year 12
- Apply through TISC
- Attend an interview if invited
- Complete the Bachelor of Biomedicine with a minimum GPA of 5.5 within the first two years to progress to the MD

Entry schemes

- [Broadway UWA](#)
- [Rural Entry Pathway](#)
- [Indigenous Entry Pathway](#)

Prerequisite subjects

- Mathematics
- Chemistry

Find out more here

ATAR

98

Duration

6 years

Places

103

Interview

Yes

UCAT

Yes

Closing date

30 September

Cost

\$11,276 - \$13,240 per year

Locations

Perth

Australian National University

Pathway Programs to the Doctor of Medicine and Surgery

ANU provides several pathways to the postgraduate Doctor of Medicine and Surgery (MChD) at ANU without having to sit the GAMSAT or applying through GEMSAS.

How to apply

- Apply through UAC
- Complete the Bachelor of Health Science OR Bachelor of Philosophy (Honours) - Science
- Attend an interview if invited to progress to the MD OR
- Apply direct to ANU
- Complete a Tuckwell Scholarship application, clearly stating your intention to study medicine
- Complete an undergraduate degree to progress to the MChD

Entry schemes

- Aboriginal and Torres Strait Islander Pathway.

Prerequisite subjects

- Chemistry

Find out more here

ATAR

90-99

Duration

7 years

Places

120

Interview

Yes

UCAT

No

Closing date

10 April (Tuckwell only)

Cost

\$13,241 per year

Locations

Canberra

Charles Darwin University & Flinders University

NT Medical Program

The Bachelor of Clinical Sciences course is a direct pathway for CDU students to study medicine, on campus in Darwin.

How to apply

- Sit the UCAT in Year 12
- Apply through SATAC
- Pass all units and gain a minimum GPA of 5.0 in the first 2 years of the Bachelor of Clinical Sciences to progress to the MD

Entry schemes

- NT Residency sub-quota
- NT First Nations sub-quota
- National First Nations sub-quota

Prerequisite subjects

- None

Find out more here

ATAR

90

Duration

6 years

Places

12

Interview

No

UCAT

Yes

Closing date

TBC

Cost

\$13,241 per year

Locations

Darwin

University of Tasmania

Bachelor of Medical Science & Doctor of Medicine

UTAS' BMedScMD will provide students with the knowledge, skills and attitudes required for a career in medicine. It is the only medical program available to study in Tasmania.

How to apply

- Sit the UCAT in Year 12
- Apply direct to UTAS

Entry schemes

- [Rural Application Process](#)
- [Aboriginal Entry Pathway](#)

Prerequisite subjects

- English
- Chemistry

Find out more here

ATAR

95

Duration

5 years

Places

N/A

Interview

No

UCAT

Yes

Closing date

30 September

Cost

\$13,241 per year

Locations

Hobart
Burnie

University of Auckland

Bachelor of Medicine and Bachelor of Surgery - First Year Entry

Entry into the MBChB is limited and competitive. Selection is based on academic merit, UCAT performance, and interview performance.

How to apply

- Apply directly to Auckland to either the [Bachelor of Health Sciences \(BHSc\)](#) or the [Bachelor of Science \(BSc\) Biomedical Science](#)
- Complete the eight required courses in the first year of your degree with a minimum GPA of 6.0
- Sit the UCAT
- Attend an interview if invited

Entry schemes

- [Undergraduate Targeted Admission Schemes](#)
- [Graduate Entry](#)

Prerequisite subjects

- One of English, Geography, History, Classical Studies, History of Art, Te Reo Māori (or Te Reo Rangatira) or Social Studies
- One of Biology, Chemistry or Physics

[Find out more here](#)

NCEA Score

250-280

Duration

6 years

Places

317

Interview

Yes

UCAT

Yes

Closing date

TBC

Cost

\$18,426 per year

Locations

Auckland

University of Otago

Bachelor of Medicine and Bachelor of Surgery - HSFY Entry

Health Sciences First Year (HSFY) is the essential first step into Otago's medical programme. You will then commence the second year of the six-year medical degree.

How to apply

- Apply directly to Otago for the [Health Sciences First Year](#) course
- Pass all 7 compulsory papers in the HSFY with an average mark of at least 65%
- Sit the UCAT
- Submit an application for the MBChB

Entry schemes

- [Te Kauae Parāoa \(Equity Groups\)](#)
- [Graduate Entry](#)

Prerequisite subjects

- None

[Find out more here](#)

NCEA Score

140

Duration

6 years

Places

300

Interview

No

UCAT

Yes

Closing date

10 December

Cost

\$18,432 per year

Locations

Dunedin

Separate entry programs

Macquarie University

University of Wollongong

These programs give you a clear and direct pathway through to becoming a doctor, but you will need to apply through a competitive selection process to gain admission to the graduate portion of the program.

You could receive benefits through this pathway that other graduate applicants won't receive, but entry is NOT guaranteed.

Entry to Medicine

studyworkgrow



Macquarie University

Bachelor of Clinical Science & Doctor of Medicine

The Bachelor of Clinical Science is designed to be the ideal preparation for the Macquarie MD and other graduate-entry medicine programs.

How to apply

- Apply through UAC
- Complete the Bachelor of Clinical Science
- Apply for the MD through GEMSAS
- Sit the GAMSAT
- Attend an interview if invited

Entry schemes

- [Schools Recommendation Scheme](#)
- [Academic Entry Program](#)
- [Adjustment Factors](#)
- [Aboriginal and Torres Strait Islander Entry Pathway](#)

Prerequisite subjects

- None, but Chemistry and Mathematics Advanced are strongly recommended

[Find out more here](#)

ATAR

90

Duration

6 years

Places

70

Interview

Yes

GAMSAT

Yes

Closing date

N/A

Cost

\$9,600 per year

Locations

Sydney

University of Wollongong

Bachelor of Pre-Medicine, Science and Health & Doctor of Medicine

The Bachelor of Pre-Medicine, Science and Health provides a solid foundation towards graduate medicine.

How to apply

- Apply through UAC
- Complete the Bachelor of Pre-Medicine, Science and Health
- Apply for the MD through GEMSAS
- Sit the GAMSAT and Casper Test
- Attend an interview if invited

Entry schemes

- [Indigenous Admissions Program](#)

Prerequisite subjects

- Mathematics
- Any 2 units of Science

Find out more here

ATAR

90

Duration

7 years

Places

100

Interview

Yes

GAMSAT

Yes

Closing date

N/A

Cost

\$9,600 per year

Locations

Wollongong

Postgraduate programs

Australian National University

Deakin University

Flinders University

Griffith University

Macquarie University

University of Melbourne

University of Notre Dame

University of Queensland

University of Sydney

University of Western Australia

University of Wollongong

These universities have medical programs that require you to have an undergraduate degree in order to apply. There are suggested paths you can take to increase your chances of gaining admission, but nothing is guaranteed.

Entry to Medicine



studyworkgrow

Australian National University

Doctor of Medicine and Surgery

The Doctor of Medicine and Surgery is a comprehensive and varied four year course for graduate students looking to enter the rewarding field of medicine.

Sit the GAMSAT, apply through GEMSAS, and attend an interview. There are no preferred Bachelor degrees or prerequisite subjects for entry to the program.

[Find out more here](#)

GPA	5.0
Duration	4 years
GAMSAT	Yes
Interview	Yes
Closing date	30 May
Locations	Canberra

Deakin University

Doctor of Medicine

This is a four-year graduate entry program for students who have already completed an undergraduate degree.

Sit the GAMSAT, apply through GEMSAS, and attend an interview if invited. Deakin also offers an [Indigenous Entry Stream](#) and [Rural Training Stream](#).

[Find out more here](#)

GPA	5.0
Duration	4 years
GAMSAT	Yes
Interview	Yes
Closing date	30 May
Locations	Geelong Warrnambool Ararat

Flinders University

Doctor of Medicine

Flinders University offers graduate entry to the MD in Adelaide and the Northern Territory, providing an alternative to the traditional pathway from secondary school to an undergraduate medical course.

Sit the GAMSAT and apply directly to Flinders. Aboriginal and/or Torres Strait Islander applicants are given preference when applying for the MD in Darwin.

[Find out more here](#)

GPA	5.0
Duration	4 years
GAMSAT	Yes
Interview	Yes
Closing date	TBC
Locations	Adelaide Regional SA Darwin

Griffith University

Doctor of Medicine

The Doctor of Medicine (MD) requires applicants to have completed an undergraduate degree before they are eligible to apply for entry.

Sit the GAMSAT and apply through GEMSAS. Be invited to attend a Griffith University Multi Station Admissions Assessment (GUMSAA). Applicants to the MD are encouraged from all degree backgrounds.

[Find out more here](#)

GPA	5.0
Duration	4 years
GAMSAT	Yes
Interview	Yes
Closing date	30 May
Locations	Gold Coast Sunshine Coast

Macquarie University

Doctor of Medicine

The four-year graduate-entry Doctor of Medicine integrates applied medical sciences with clinical sciences, professionalism, research and cultural responsiveness.

Sit the GAMSAT, apply through GEMSAS, and attend an interview. You must also submit a Personal Statement as part of the application process.

[Find out more here](#)

GPA	5.0
Duration	4 years
GAMSAT	Yes
Interview	Yes
Closing date	30 May
Locations	Sydney

University of Melbourne

Doctor of Medicine

Designed for students who have completed their undergraduate studies and are committed to professional training.

Sit the GAMSAT, apply through GEMSAS, and attend an interview. 15 places are reserved for rural students, who do not need to sit the GAMSAT or apply through GEMSAS. Indigenous students also do not need to sit the GAMSAT or apply through GEMSAS.

[Find out more here](#)

GPA	5.0
Duration	4 years
GAMSAT	Yes
Interview	Yes
Closing date	30 May
Locations	Melbourne

University of Notre Dame

Doctor of Medicine

The MD at Notre Dame is the only medical degree offered by a Catholic university.

Sit the GAMSAT and Casper, apply through GEMSAS and direct to Notre Dame, and attend an interview if invited. As a guide, students commencing the MD at Notre Dame in 2024 had an average GPA of 6.58 and an average GAMSAT score of 64.85.

[Find out more here](#)

GPA	5.2
Duration	4 years
GAMSAT	Yes
Interview	Yes
Closing date	30 May
Locations	Sydney Fremantle

University of Queensland

Doctor of Medicine

The UQ Doctor of Medicine (MD) postgraduate-entry program provides hands-on experience preparing you to work in any global setting.

Sit the GAMSAT, apply through GEMSAS, and attend an interview if invited. You must complete prerequisite tertiary level studies in cell biology and systems physiology.

[Find out more here](#)

GPA	5.0
Duration	4 years
GAMSAT	Yes
Interview	Yes
Closing date	30 May
Locations	Brisbane Toowoomba Rockhampton Bundaberg

University of Sydney

Doctor of Medicine

The Doctor of Medicine is suitable for graduates from any discipline who are interested in becoming a doctor and have a passion for healthcare.

Sit the GAMSAT, submit a QAS application through UAC, and apply directly to the University of Sydney.

[Find out more here](#)

GPA	5.0
Duration	4 years
GAMSAT	Yes
Interview	No
Closing date	TBC
Locations	Sydney Dubbo

University of Western Australia

Doctor of Medicine

Bachelor degree holders or students who are close to completing their first bachelor's degree may be eligible to apply for graduate entry into the Doctor of Medicine (MD).

Sit the GAMSAT, apply through GEMSAS, and attend an interview if invited.

[Find out more here](#)

GPA	5.5
Duration	4 years
GAMSAT	Yes
Interview	Yes
Closing date	30 May
Locations	Perth

University of Wollongong

Doctor of Medicine

UOW offer a four-year program of study and encourage applications from high-performing graduates from a diverse range of backgrounds. No preference is given to any particular undergraduate degree.

Sit the GAMSAT and Casper Test, apply through GEMSAS, submit an admissions portfolio, and attend an interview if invited.

[Find out more here](#)

GPA	5.5
Duration	4 years
GAMSAT	Yes
Interview	Yes
Closing date	30 May
Locations	Wollongong Nowra Moss Vale

CONNECTING YOUNG PEOPLE
WITH FUTURES THEY LOVE

studyworkgrow.com

p. + 61 7 4039 3862

e. info@studyworkgrow.com

Study Work Grow has exercised its best efforts and judgement in compiling the information in this Guide, however you acknowledge that: 1) it is provided for information and general advisory purposes only and does not constitute professional, legal or career advice, 2) it should not be relied upon or regarded as a comprehensive assessment or evaluation or recommendation of your skills, competencies or personality or your prospects of success in a particular vocation, field or industry, 3) we recommend you contact the relevant educational institution or professional or trade organisation before making any decisions about a career or future plans, 4) to the extent permitted by, law we make no representations or warranties of any kind, express or implied, 5) you release us from liability for any loss, damage or expense resulting or arising from your use of or reliance on this communication.

All rights are reserved.