

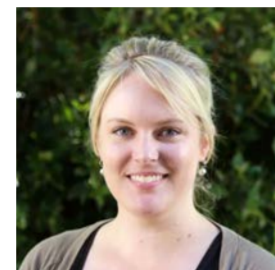


**Julie Taylor**  
Principal

## Teaching and Learning Leadership Team



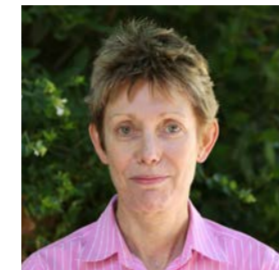
**Jeane Schocroff**  
Deputy Principal



**Casey Hall**  
Assistant Principal  
Primary Years



**Paul Hennessy**  
Assistant Principal  
Middle Years



**Marg Lambert**  
Assistant Principal  
Alternative Programs



**Robin Sleeman**  
Assistant Principal  
Senior Years



**Neil Pilgrim**  
Senior Leader  
VET/RTO



**Miriam Parsons**  
LPP Manager



**Anna Lane**  
Pedagogy  
Coordinator  
Alternative Programs



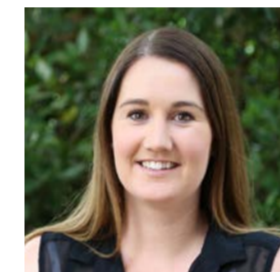
**Dani Clayton**  
Pedagogy  
Coordinator Arts,  
Technologies  
and Business



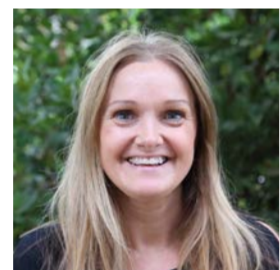
**Sonja Olsen**  
Pedagogy  
Coordinator Arts,  
Technologies  
and Business



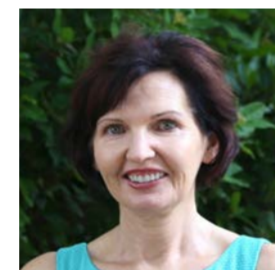
**Brett Ferris**  
Pedagogy  
Coordinator English,  
Research Project and  
Community Studies



**Jess Galvin**  
Pedagogy  
Coordinator English,  
Research Project and  
Community Studies



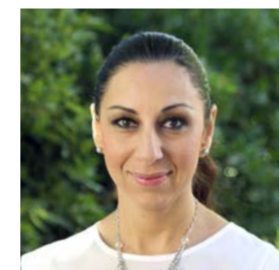
**Rachel Brennan**  
Pedagogy  
Coordinator HASS/  
HPE/PLP



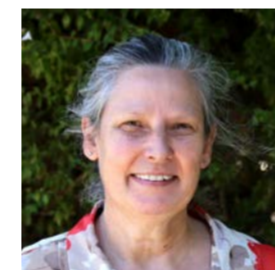
**Bernadette Flaherty**  
Pedagogy  
Coordinator HASS/  
HPE/PLP



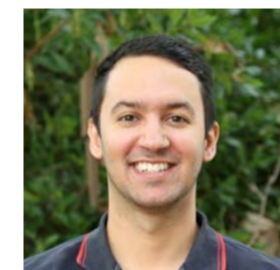
**Courtney Miels**  
Pedagogy  
Coordinator  
Languages R-12



**Zena Abiad**  
Pedagogy  
Coordinator Maths  
and Science



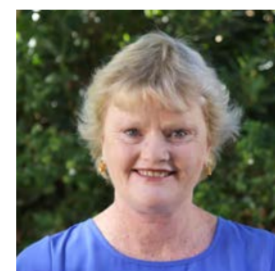
**Jan Menzies**  
Pedagogy  
Coordinator Maths  
and Science



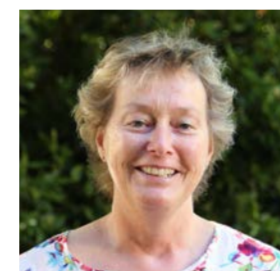
**Jameel Jezierski**  
Pedagogy  
Coordinator  
Middle Years



**Rebecca Ramsey**  
Pedagogy  
Coordinator  
Middle Years



**Teresa Montague**  
Pedagogy  
Coordinator  
Primary Years



**Sue Johnston**  
Library Manager

- ♦ Curriculum
- ♦ Pedagogy
- ♦ Face to face curriculum events
- ♦ Advisory/Care teaching
- ♦ Assessment and reporting (Jeane)
- ♦ Numeracy and Literacy (Jeane)

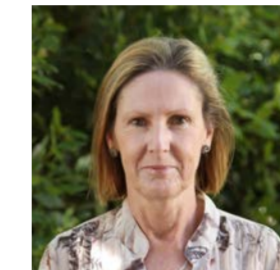
- ♦ Negotiated Learning Plans (Marg)
- ♦ Alternative programs, learning support (Marg)
- ♦ Well being (Jeane)
- ♦ Technology for pedagogy (Jeane)
- ♦ Career Pathways and Planning (Marg)
- ♦ DAYMAP for pedagogy (Paul)

- ♦ Data use to inform teaching (Paul)
- ♦ School liaison (Marg)
- ♦ Professional Learning (Jeane)
- ♦ Library Services (Sue)

## Student Welfare Leadership Team



**Daniel Bayer**  
Assistant Principal



**Heather Tonkin**  
Student Wellbeing  
Leader Primary



**Dennis Shriner**  
Student Wellbeing  
Leader Middle



**Darren Jones**  
Student Wellbeing  
Leader Senior



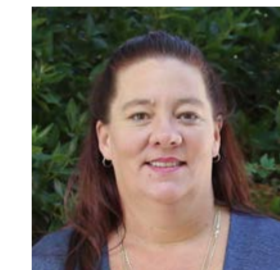
**Ingred Perry**  
Student Wellbeing  
Leader Senior



**Lisa Hannaford**  
Psychologist



**Mic Bradshaw**  
Aboriginal Community  
Education Officer



**Candice Blayney**  
Youth Worker

- ♦ Enrolment
- ♦ Student Welfare
- ♦ Case management
- ♦ Student Induction
- ♦ Student Transition
- ♦ Liaison with support services (Daniel)
- ♦ Referrals
- ♦ DAYMAP for support services (Daniel)
- ♦ Student Leaders (Ingred/Dennis)

## School Operations Leadership Team



**Mark Hill**  
Business Manager



**Kenneth Burgoyne**  
Learning Technology  
Manager



**Kirsty Iversen**  
Client Services  
Manager



**Kylee Fenwick**  
Administration and  
Data Services Manager



**Danilo Benvenuto**  
Allocation and  
Timetable Manager



**Robyn Hondow**  
Communication and  
Events Manager



**Susan Randall**  
Executive Assistant

- ♦ Timetable (Danilo/Paul)
- ♦ Data: PAT, NAPLAN, RR, MDI (Kylee)
- ♦ DAYMAP functional (Kenneth)
- ♦ Communication and events (Robyn)
- ♦ Technology (Kenneth)
- ♦ Finance (Mark/Kirsty)
- ♦ Facilities (Mark)
- ♦ WHS (Mark)
- ♦ Enrolments and EDSAS (Kirsty)
- ♦ Website and Intranet
- ♦ SACE operations (SSOs/Daniel)
- ♦ Teacher Induction (Mark/Daniel)
- ♦ Daily Management
- ♦ Student Absences (SSOs/Daniel)