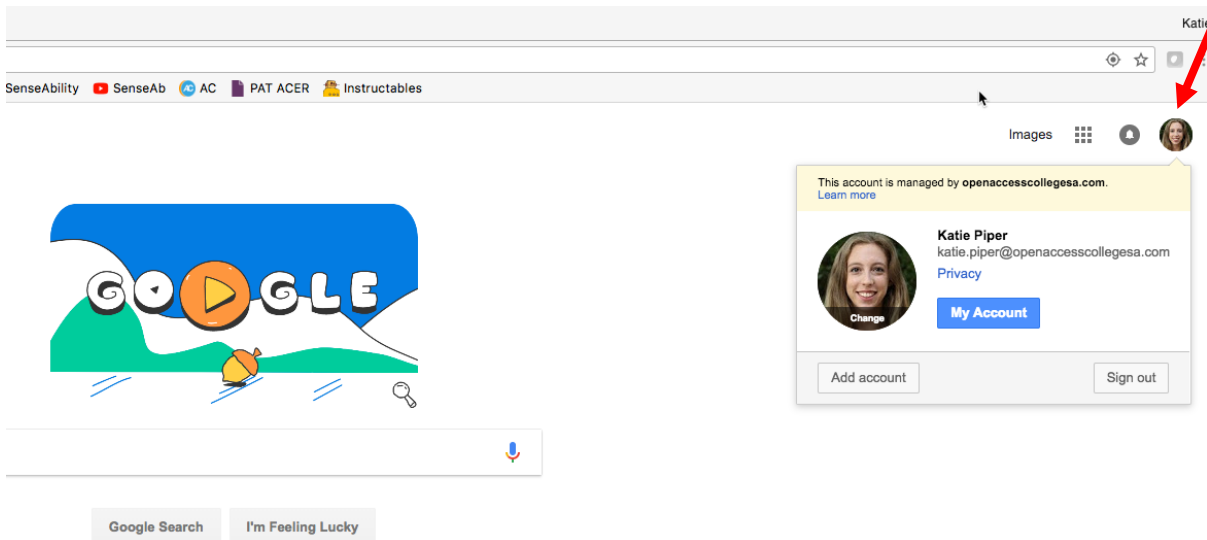


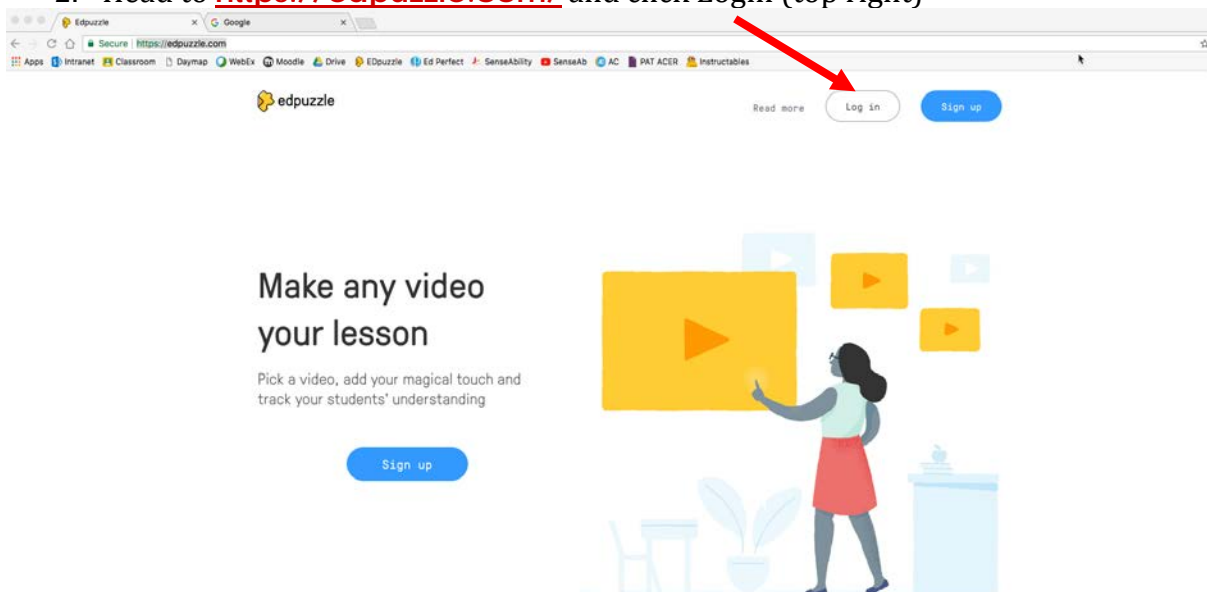
Logging into EdPuzzle with Google

1. Ensure you are logged into your Open Access College Google account ([click here for instructions on using your OAC Google account](#)).

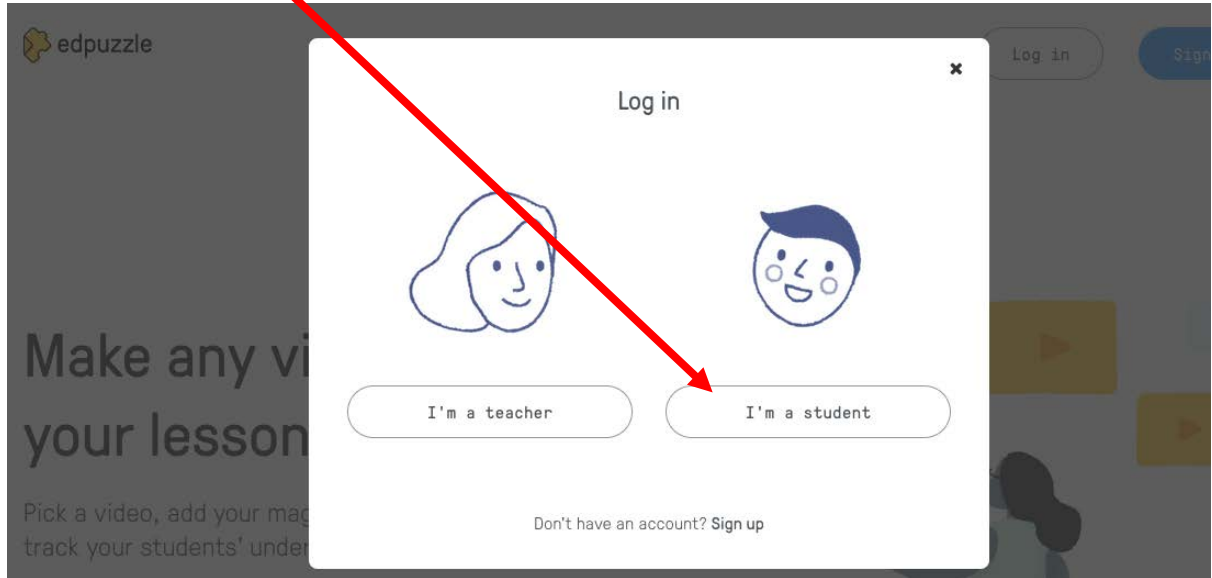
Check this by going to the Google homepage and clicking on the icon at the top right.



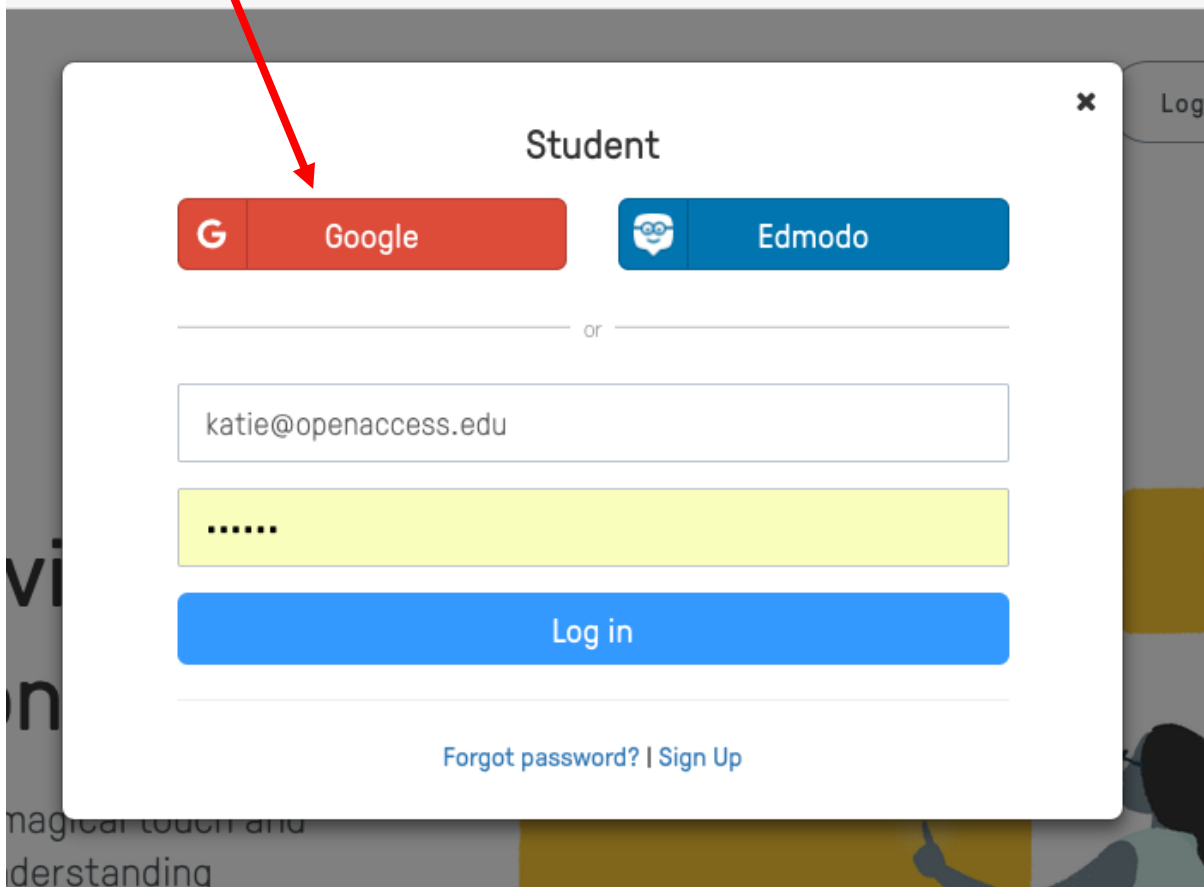
2. Head to <https://edpuzzle.com/> and click Login (top right)



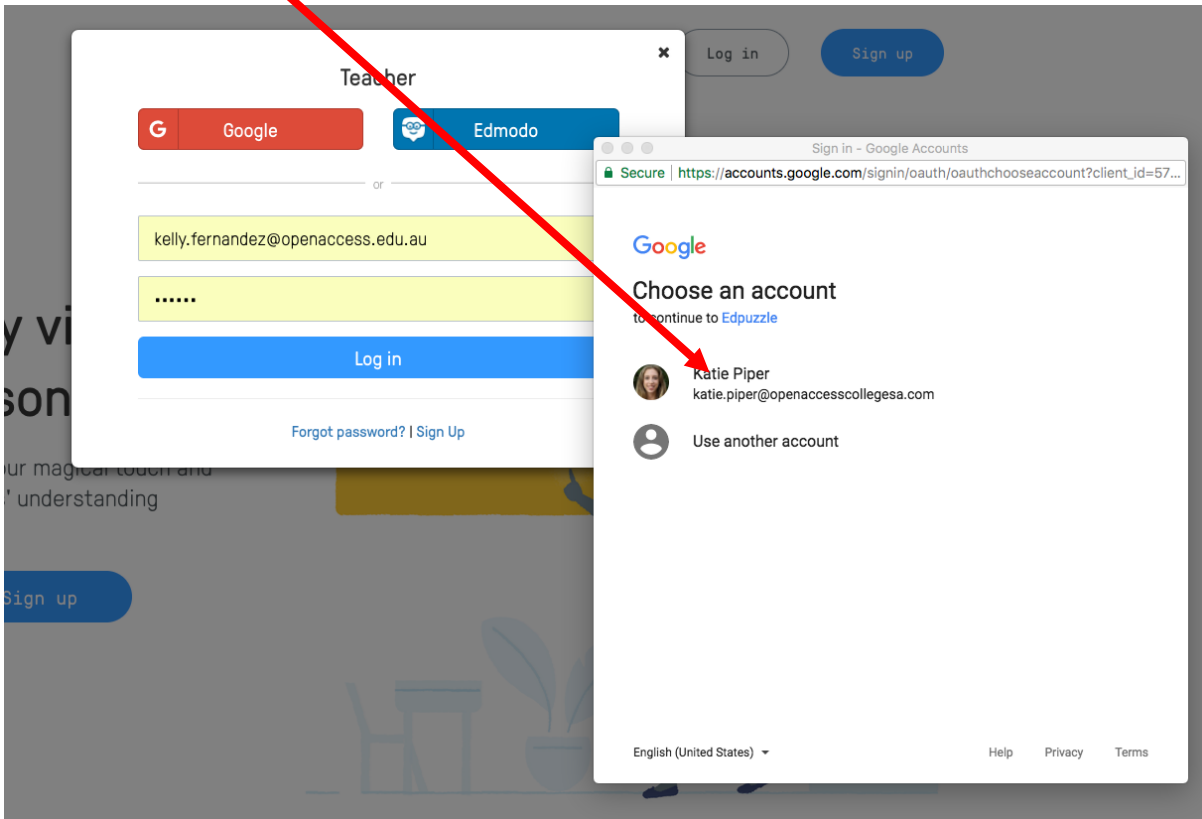
3. Click 'I'm a student'



4. DO NOT CLICK LOGIN or type in any details. Click the big burnt orange Google button, top left.



- It may ask you to confirm which Google account you want to login with – click the openaccesscollegesga.com one.



- Your classes will appear automatically.

