

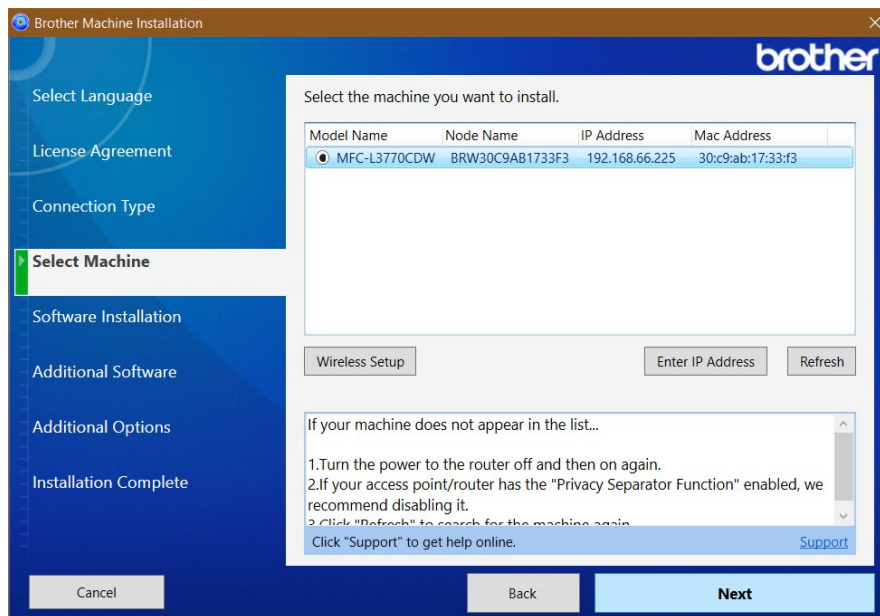
# Printer – Wireless & Laptop Setup

## Part 1 - Connect Printer to Your Home Wireless Network

1. Turn on the printer and wait for it to finish starting up
2. Using the printer touchscreen, tap the **WiFi button** in the **bottom centre** of the touch display
  - a. If you can't see the WiFi button, press the **physical Home button** to the right of the display
  - b. If you see a **blue wireless signal button** instead, your printer is already connected to your home wireless network; please skip to the printer installation section below
3. In the *Select Method menu*, Tap **Setup Wizard**
  - a. If you see the *Enable WLAN?* menu, tap **Yes**
4. In the *SSID of Access Point* menu, wait for the printer to find your SSID (home wireless network name)
  - a. If the printer can't find your home wireless network, please restart your home networking equipment, e.g., router, modem wireless access point, restart the printer and try again
5. Tap the **name of your home wireless network**, and then tap the **green OK button** in the bottom right
6. In the *Network Key* menu, enter the **password** of your home wireless network and tap **OK**
7. Wait for the printer to connect to your home wireless network, then tap **OK**
  - a. If you encounter any errors, please turn the printer off, turn it back on and try again
8. Press the **physical Home button** to the right of the display to return home
  - a. You will see that the WiFi button has turned into a **blue wireless signal button**
  - b. This means your printer has successfully connected to your home wireless network

## Part 2 - Install Printer on Laptop

1. Locate the **Brother Printer Software folder** on the desktop of your school laptop
  - a. Alternatively, locate the **red USB stick** labelled "**Printer**" included with your printer and plug it in
2. **Double-click** the "**1. Double-click me to install printer software on computer**" file
3. When the *Brother Machine Installation software* opens, click **Next** in the bottom right
4. **Tick the box** to **accept the license agreement** and click **Next**
5. Select the **Wireless Network Connection (Wi-Fi) option** and click **Next**
6. In the *Select the machine you want to install* menu, wait for the software to locate your wireless printer
  - a. After a minute or two, it should appear similar to the below (*the IP Address may be different*)



- b. If the printer installation software fails to find your wireless printer, please ensure your laptop and printer are connected to the same wireless network
  - c. Please also try restarting the printer, laptop, and your home network equipment, and then try again
7. Select the **MFC-L3770CDW printer** and click **Next**
  8. Select the **Standard installation type**, click **Next**, and wait for the printer to finish installing
    - a. **Accept** or click **Yes** to any Windows driver or software installation popups
  9. Once the printer has finished installing, click **Next > Next > Finish**
  10. You're done! Try wirelessly printing something to the **Brother MFC-L3770CDW printer**!