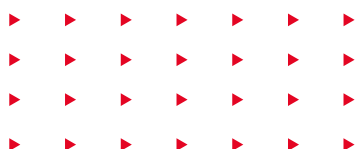


# 2024 VET FOR SCHOOL STUDENTS

**tafeSA**



Government of  
South Australia



**[tafesa.edu.au](https://tafesa.edu.au)**

# TAFE SA COURSES FOR SCHOOL STUDENTS 2024

TAFE SA's courses for school students are designed for students in Year 10 to Year 12. They provide the opportunity to learn specific industry skills and gain credit towards a nationally recognised qualification such as a certificate, diploma or advanced diploma, all while students undertake their South Australian Certificate of Education [SACE].

## WHY TAFE SA?

Our courses are designed in partnership with industry to give students the practical, hands-on skills and experience that employers value. Students gain access to our state-of-the-art facilities and learn from industry experts, ensuring they graduate with a competitive edge.

## HOW DO I SIGN UP?

To apply for any of the courses you see in this guide, speak to your school's career counsellor or VET coordinator. For any questions email us on [schools@tafesa.edu.au](mailto:schools@tafesa.edu.au) or call us on 1800 882 661.

## WHAT ARE THE OPTIONS?

TAFE SA has a large range of courses available for school students in 2024. There are three different ways to study with us. You can choose either: a Flexible Industry Pathways program, Stackable VET, or school-based apprenticeship or traineeship.

### 1

#### **FLEXIBLE INDUSTRY PATHWAYS PROGRAM**

The South Australian Government's Flexible Industry Pathways program is available for students turning 16 years or older and enrolled in Year 11 or Year 12 in 2024. Students will study with TAFE SA while undertaking their SACE, and graduate with a nationally recognised qualification from Certificate II to Certificate III level, in one of South Australia's growth industries.

To help students prepare for a Flexible Industry Pathways course, students are required to first complete the VET Readiness Orientation [VETRO] process, which can be started from as early as Year 10. More information about VETRO is available at [tafesa.edu.au/vetro](http://tafesa.edu.au/vetro).

### 2

#### **SPECIALISED COURSES FOR SECONDARY STUDENTS ['STACKABLE VET']**

As well as the qualifications available through the state government's Flexible Industry Pathways program, TAFE SA has additional accredited courses especially for high school students. These courses are part of the South Australian Government's 'Stackable VET' program and provide students with highly valued vocational skills, prepare them for the workplace and allow them to try out different areas before committing to a qualification. 'Stackable VET' courses may also earn credit towards a student's SACE.

Stackable VET programs are available for Year 10, Year 11 and Year 12 students and are generally delivered one day per week unless specified otherwise.



### 3 SCHOOL BASED APPRENTICESHIPS AND TRAINEESHIPS

Secondary school students can begin an apprenticeship or traineeship in Years 10, 11 or 12, combining paid employment and structured work-related training as part of their SACE. This allows students to earn while they learn, and graduate with on-the-job training and skills.

TAFE SA's school-based apprenticeships and traineeships courses are not listed in this guide. Instead, visit the TAFE SA website for the list of school-based apprenticeship and traineeship courses currently available or, if the course you're interested in is not listed, please contact TAFE SA on 1800 882 661 as we may be able to design bespoke training to meet your needs.







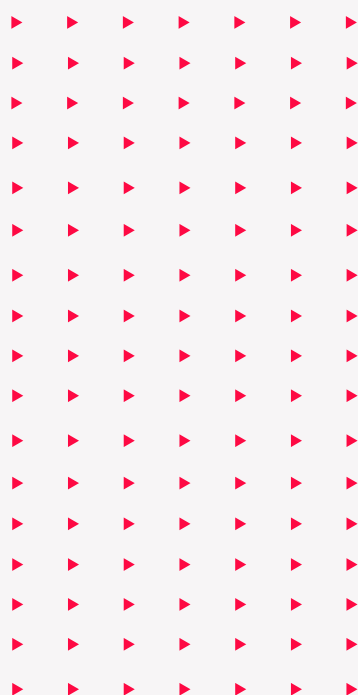
## ACKNOWLEDGEMENT OF COUNTRY

TAFE SA acknowledges the traditional owners of the land on which we live and work and recognises Aboriginal and Torres Strait Islander peoples' unique cultural and spiritual relationship to the sky, land and waters of South Australia. We pay our respects to their Elders past, present and emerging and extend that respect to other Aboriginal and Torres Strait Islander peoples. We are committed to engaging with Aboriginal communities and people to support, develop, and empower them and their communities.

**Artwork** Karen Briggs [Yorta Yorta]

# CONTENTS

<b>ARTS AND DESIGN</b>	<b>4</b>
FASHION	4
SCREEN AND MEDIA	5
<b>BUILDING AND CONSTRUCTION</b>	<b>8</b>
CONSTRUCTION	8
ELECTROTECHNOLOGY	12
PLUMBING	15
<b>BUSINESS AND IT</b>	<b>16</b>
RETAIL	16
IT	17
<b>COMMUNITY SERVICES</b>	<b>18</b>
EARLY CHILDHOOD EDUCATION	20
INDIVIDUAL SUPPORT	21
<b>HAIR AND BEAUTY</b>	<b>24</b>
HAIRDRESSING	24
BEAUTY	26
<b>HEALTH AND LIFESTYLE</b>	<b>28</b>
ALLIED HEALTH	29
SPORT AND RECREATION	32
<b>HOSPITALITY AND TOURISM</b>	<b>33</b>
BAKING	34
HOSPITALITY	35
COOKERY	37
TOURISM AND EVENTS	38
<b>MINING, ENGINEERING AND AUTOMOTIVE</b>	<b>39</b>
AUTOMOTIVE	39
ENGINEERING	41
<b>PRIMARY INDUSTRIES AND SCIENCE</b>	<b>44</b>
AGRICULTURE	44
ANIMAL CARE	48
AQUACULTURE	50
HORTICULTURE	51
RURAL OPERATIONS	53
<b>FURTHER INFORMATION</b>	<b>54</b>

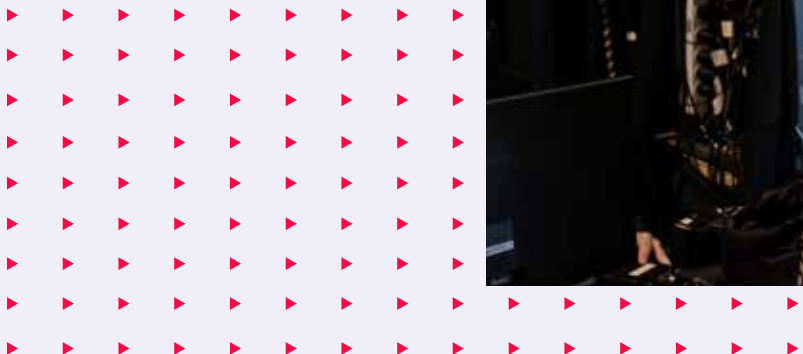


# ARTS & DESIGN

Don't ignore your restless creative energy – let it out and put it to work. TAFE SA's arts and design courses give you the skills, confidence, experience and industry networks to transform your creativity into a future where every day is an opportunity to create something new.

## FASHION

STACKABLE VET DESIGNED FOR YEAR 10 AND YEAR 11 STUDENTS	<b>INTRODUCTION TO FASHION DESIGN AND MAKING</b>	
	The fashion team at TAFE SA will introduce you to basic trade skills required to work in the fashion industry. Learn how to sew materials by machine, fix minor machine issues, and complete a small textile project.	
	<b>COST:</b> \$847.00 pp	<b>CONTENT:</b> MSMWHS200      Work safely
	<b>DURATION:</b> 10 Days	MSTAT2005      Sew materials by machine
	<b>NOMINAL HOURS:</b> 70	<b>LOCATIONS:</b> Adelaide TAFE SA campus
	<b>SACE CREDITS:</b> Attracts 10 Stage 1 SACE Credits	





# SCREEN AND MEDIA

## CERTIFICATE III IN SCREEN AND MEDIA [CUA31020]

Learn a range of skills and knowledge across design, 3D modelling, animation, video and digital imaging. Study online by video conference 1 day per week with the convenience of having a lecturer at hand to guide you through a range of experiences in this exciting field. Use this course to explore your media specialisation for further study. Study from your home or school in your region.

**TYPE OF COURSE:** Flexible Industry Pathway, suitable for students in Year 11 or Year 12.

**COURSE DELIVERY:** 1 day per week over 35 weeks.  
Delivered fully online.

**DAY, TIME & DATES:** Every Thursday during SA school terms, 9.00am-4.00pm. Offered once per year at the commencement of semester one.

**REQUIREMENT:** It is recommended that students do not have a full study band at school if they also wish to study this course. This course contains some complexity in handling software and will require six hours homework per week, and six hours on each delivery day. Schools should consider acquiring the software listed in additional information.

### COMPETENCIES DELIVERED:

Competencies and scheduled class time may differ from campus to campus.

NATIONAL CODE	UNIT NAME [CORE/ELECTIVE]	NOMINAL HOURS
	<b>CORE</b>	
BSBCRT311	Apply critical thinking skills in a team environment	40
CUAWHS312	Apply work health and safety practices	30
CUAIND311	Work effectively in the creative arts industry	50
	<b>ELECTIVE</b>	
CUADES303	Explore and apply the creative design process to 3D forms	60
CUADES302	Explore and apply the creative design process to 2D forms	60
CUAANM301	Create 2D digital animations	35
CUADIG311	Prepare video assets	30
CUADIG304	Create visual design components	30
CUADES202	Evaluate the nature of design in a specific industry context	30
CUADIG315	Produce digital images	50
ICTGAM304	Develop three-dimensional [3D] models for digital games	50
Course requires 3 core and 8 elective units, other units by negotiation. APPROX. TOTAL HOURS: 465-475 depending on units		

**SACE CREDITS:** Students can gain between 65-75 Stage 2 SACE Credits on completion of this qualification, dependent on units chosen.

**COURSE FEES:** Subsidised co-payment \$1255.50-\$1282.50.

**TRAINING FORMAT:** Online.

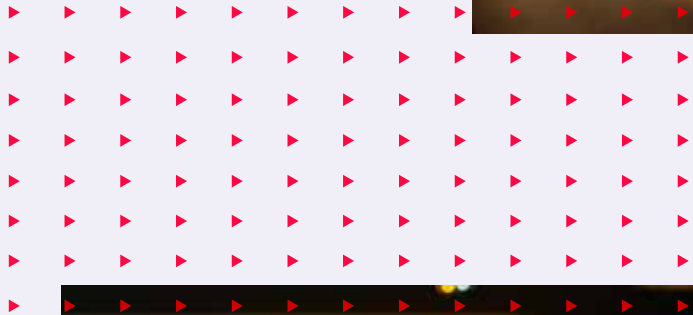
**INCIDENTALS:** Students will participate in the program from their school or equivalent where approved by their school. Students will require access to Adobe Creative Cloud and Autodesk Maya software and a WACOM [or equivalent] tablet. Homework is an additional six hours per week.

**SELECTION CRITERIA:** Students must meet VET for Secondary School Students eligibility criteria.

**DELIVERY LOCATION:** Barossa Valley, Berri, Mount Barker, Mount Gambier, Regency, Whyalla, Noarlunga, Port Pirie, Port Augusta, all metro.

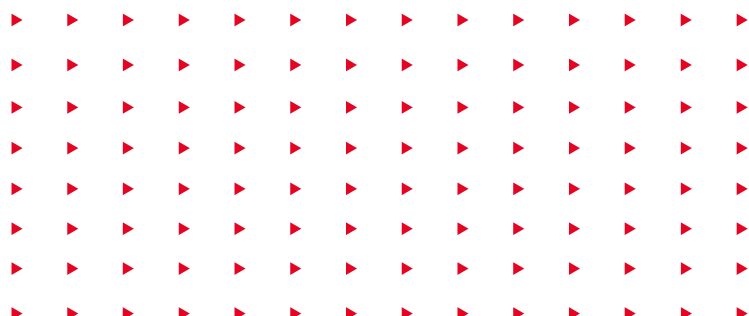
**CONTACT:** schools@tafesa.edu.au







STACKABLE VET DESIGNED FOR YEAR 12 STUDENTS	<b>ADVANCED SOUND TECHNICAL PRODUCTION</b> This course will develop skills in sound and technical production with a key focus on live audio operations and the installation and disassembly of audio equipment.	
	<b>COST:</b> \$1650.00 pp <b>DURATION:</b> 12 days <b>NOMINAL HOURS:</b> 140	<b>CONTENT:</b> CUASOU308 Install and disassemble audio equipment CUASOU331 Undertake live audio operations <b>DELIVERY LOCATIONS:</b> Adelaide College of the Arts <b>SACE CREDITS:</b> Attracts 20 Stage 2 SACE Credits
STACKABLE VET DESIGNED FOR YEAR 12 STUDENTS	<b>ADVANCED LIVE PRODUCTION OPERATIONS</b> This course will develop skills in supporting live performances. Students will learn to work effectively backstage during performances as well as assisting with production operations.	
	<b>COST:</b> \$1950.00 pp <b>DURATION:</b> 18 days <b>NOMINAL HOURS:</b> 190	<b>CONTENT:</b> CUASTA311 Assist with production operations for live performances CUASMT311 Work effectively backstage during performances <b>DELIVERY LOCATIONS:</b> Adelaide College of the Arts <b>SACE CREDITS:</b> Attracts 20 Stage 2 SACE Credits
STACKABLE VET DESIGNED FOR YEAR 12 STUDENTS	<b>ADVANCED LIVE MUSIC PRODUCTION</b> This course will develop skills in electronic music productions. Students will focus on creating simple music compositions, prepare audio assets and gain an understanding of careers in the creative arts industry.	
	<b>COST:</b> \$1650.00 pp <b>DURATION:</b> 10 days <b>NOMINAL HOURS:</b> 140	<b>CONTENT:</b> CUASOU304 Prepare audio assets CUAIND314 Plan a career in the creative arts industry CUAMLT302 Apply knowledge of style and genre to music industry practice CUAMCP311 Create simple music compositions <b>DELIVERY LOCATIONS:</b> Adelaide College of the Arts <b>SACE CREDITS:</b> Attracts 20 Stage 2 SACE Credits





# BUILDING & CONSTRUCTION

TAFE SA's Building and Construction courses help you develop the skills, precision, confidence and industry knowledge to make every day on the job a good one. Start here for a career that can become whatever you want – from a lifetime on the tools to years watching your own business grow.

## CONSTRUCTION

STACKABLE VET DESIGNED FOR  
YEAR 10 AND YEAR 11 STUDENTS

### INTRODUCTION TO CABINET MAKING

Cabinet makers build, repair and install furniture or fixtures made from either wood or wood substitutes, including mass produced flat panels destined to become kitchen cupboards and other furniture items. This course teaches you the skills to join solid timber, operate basic static machines and make measurements and calculations.

**COST:** \$1433.50 pp

**DURATION:** 12 Days

**NOMINAL HOURS:** 144

**CONTENT:** MSFFM2013

Use furniture making hand and power tools

MSFFM2016

Join solid timber

MSFFM2017

Hand make timber joints

MSFFM2018

Operate basic static machines safely

**LOCATIONS:** Tonsley

**SACE CREDITS:** Attracts 10 Stage 1 SACE Credits

### WHITE CARD

This course equips students with the minimum work health and safety training required prior to undertaking construction work.

**COST:** \$140.00 pp

(costs may apply for delivery in regional or remote areas where travel and accommodation may be required)

**DURATION:** 1 Day

**NOMINAL HOURS:** 6

**CONTENT:** CPCCWHS1001

Prepare to work safely in the construction industry

**LOCATIONS:** Metropolitan and Regional school sites upon negotiation with TAFE SA. Available at most TAFE SA campus locations.

**SACE CREDITS:** None

## ADVANCED CARPENTRY SKILLS

This course teaches students how to use carpentry tools and equipment, carry out levelling operations and setting out.

**COST:** \$2628.00 pp

**DURATION:** 20 Days +  
20 hours homework

**NOMINAL HOURS:** 144

**CONTENT:** CPCCCA2002 Use carpentry tools and equipment  
CPCCOM3006 Carry out levelling operations  
CPCCCA3002 Carry out setting out

**LOCATIONS:** Elizabeth, Grand Junction Trade Training Centre, Mount Gambier, Noarlunga, Port Augusta, Port Pirie, Tonsley, Western Technical College, Whyalla and onsite by negotiation.

**SACE CREDITS:** Attracts 20 Stage 2 SACE Credits

## ADVANCED CARPENTRY SAFETY SKILLS

This course teaches students how to work safely at heights, erect and dismantle restricted height scaffolding, operate elevated work platforms, install lining, panelling and moulding and setup indirect powder-actuated power tools.

**COST:** \$2555.00 pp

**DURATION:** 20 Days +  
20 hours homework

**NOMINAL HOURS:** 140

**CONTENT:** CPCCCM2012 Work safely at heights  
CPCCCM2008 Erect and dismantle restricted height scaffolding  
CPCCCM3001 Operate elevated work platforms up to 11 metres  
CPCCCA3024 Install lining, panelling and moulding  
CPCCCA3027 Setup, operate and maintain indirect action powder-actuated power tools

**DELIVERY LOCATION:** Tonsley, Elizabeth TAFE SA campuses. Other locations available upon negotiation.

**SACE Credits:** Attracts 20 Stage 2 SACE Credits

## ADVANCED BRICKLAYING AND BLOCKLAYING

This course teaches students skills in bricklaying and blocklaying, including how to lay masonry walls and corners.

**COST:** \$2628.00 pp

**DURATION:** 20 Days +  
20 hours homework

**NOMINAL HOURS:** 142

**CONTENT:** CPCCBL3005 Lay masonry walls and corners  
CPCCO2013 Carry out concreting to simple forms  
CPCCBL2001 Handle and prepare bricklaying and blocklaying materials  
CPCCBL2002 Use bricklaying and blocklaying tools and equipment

**DELIVERY LOCATION:** Tonsley, Noarlunga and Elizabeth TAFE SA campuses, and school sites upon negotiation.

**SACE CREDITS:** Attracts 20 Stage 2 SACE Credits

## ADVANCED WALL AND FLOOR TILING

This course teaches students how to install floor tiles and carry out concreting to simple forms.

**COST:** \$2555.00 pp

**DURATION:** 20 Days +  
20 hours homework

**NOMINAL HOURS:** 140

**CONTENT:** CPCCWF3002 Install floor tiles  
CPCCO2013 Carry out concreting to simple forms

**LOCATIONS:** Tonsley, Noarlunga and Elizabeth TAFE SA campuses. School sites upon negotiation.

**SACE CREDITS:** Attracts 20 Stage 2 SACE Credits

## FEE SUPPORT

Construction and Industry Training Board (CITB) working in partnership with TAFE SA are able to offer students a subsidy of \$2,000 towards any Advanced Skills courses including Advanced Carpentry Skills, Advanced Carpentry Safety Skills, Advanced Bricklaying and Blocklaying, Advanced Wall and Floor Tiling. To be eligible students need to have completed a Doorways2Construction Flexible Industry Pathway course. Find out more <https://citb.org.au/d2c-students/year-12-advanced-skills>



## BUILDING & CONSTRUCTION



## CERTIFICATE II IN CONSTRUCTION PATHWAYS [CPC20220]

Are you looking to enter a construction apprenticeship, but would like to get a taste of the industry first? If you're looking for a pathway to a full apprenticeship in the construction industry, this course is great starting point.

The Certificate II qualification is an introduction to carpentry and wet trades such as bricklaying and provides a pathway to the primary trades in the construction industry. Develop your understanding of building and be exposed to common scenarios you'll experience on the job in this pre-apprenticeship course.

**TYPE OF COURSE:** Flexible Industry Pathway suitable for Year 11 students.

**COURSE DELIVERY:** 1 day per week for 35 weeks.

**DAY, TIME & DATES:** Day and times vary from location to location.

**RECOMMENDATION:** Completion of CPCCWHS1001 – Prepare to work safely in the Construction industry is recommended for all students undertaking construction work or training.

It is available at an additional cost of \$140 per participant.

### COMPETENCIES DELIVERED:

Competencies and scheduled class time may differ from campus to campus.

NATIONAL CODE	UNIT NAME	NOMINAL HOURS
<b>CORE (5 required)</b>		
CPCCOM1012	Work effectively and sustainably in the construction industry	20
CPCCOM1013	Plan and organise work	20
CPCCOM1015	Carry out measurements and calculations	20
CPCCVE1011	Undertake a basic construction project	40
CPCCWHS2001	Apply WHS requirements, policies and procedures in the Construction Industry	20
<b>ELECTIVE (5 required)</b>		
CPCCJN2001	Assemble components	32
CPCCCM2004	Handle construction materials	16
CPCCCM1011	Undertake basic estimation and costing	16
CPCCCM2006	Apply basic levelling procedures	8
CPCCCM2005	Use construction tools and equipment	96
CPCCBL2001	Handle and prepare bricklaying and blocklaying materials	16
CPCCBL2002	Use bricklaying and blocklaying tools and equipment	30
CPCCCM2013	Undertake basic installation of wall tiles	120
CPCCSP2002	Use solid plastering tools and equipment	80
CPCCCA2011	Handle carpentry materials	16
CPCCCM2009	Carry out basic demolition	32

Course requires 5 core and 5 elective units. Elective units will vary by delivery location.  
APPROX. TOTAL HOURS 288-398 depending on units

**SACE CREDITS:** Students can gain between 40-55 Stage 1 SACE Credits on completion of this qualification, dependent on units chosen.

**COURSE FEES:** Subsidised co-payment \$172.80-\$238.80.

**TRAINING FORMAT:** Classroom, online and workshop.

**INCIDENTALS:** Text Book \$100. Students must have the following Personal Protective Equipment [that students must organise themselves approx. \$100] including: **Long sleeve hi-vis shirt; Long pants; Steel capped boots; Clear safety glasses.**

**SELECTION CRITERIA:** Students must meet VET for Secondary Schools Eligibility Criteria.

**DELIVERY LOCATION:** Elizabeth, Grand Junction Trade Training Centre, Mount Barker, Mount Gambier, Noarlunga, Port Augusta, Port Pirie, Tonsley, Western Technical College, Whyalla, and onsite by negotiation.

**CONTACT:** schools@tafesa.edu.au

## ELECTROTECHNOLOGY

### CERTIFICATE II IN ELECTROTECHNOLOGY [CAREER START] [UEE22020]

This course opens the door to careers in the high-tech electrotechnology industry.

The growing industry requires qualified tradespersons in the areas of domestic and commercial electrical installations; electrical power generation and distribution; telecommunications and security systems; air-conditioning and refrigeration; instrumentation and process control; renewable and sustainable energy and electric vehicles and rail transport.

You will learn the fundamental electrical knowledge and skills to be work ready. It also provides a pathway to those who are wanting to gain an apprenticeship as an Electrician. If an apprenticeship is obtained many of the units are transferable to Certificate III in Electrotechnology Electrician [UEE30811].

The Electrotechnology industry highly regard this course as a benchmark for applying for apprenticeships with major South Australian electrical companies.

**COURSE TYPE:** Flexible Industry Pathway, suitable for Year 11 students.

**COURSE DELIVERY:** 1 day per week over 12 months. Regional locations and block delivery available upon negotiation with TAFE SA.

**DAY, TIME & DATES:** 8.00am-4.30pm. Starting week of 1 February. Day and times vary from location to location.

#### COMPETENCIES DELIVERED:

Competencies and scheduled class time may differ from campus to campus.

Unit Code	Unit Title	Nominal Hours
<b>CORE</b>		
CPCCWHS1001	Prepare to work safely in the construction industry	10
UEECD0007	Apply work health and safety regulations, codes and practices in the workplace	20
UEECD0009	Carry out routine work activities in an energy sector environment	40
UEERE0021	Provide basic sustainable energy solutions for energy reduction in residential premises	40
UEECD0038	Provide solutions and report on routine electrotechnology problems	60
UEECD0046	Solve problems in single path circuits	40
UEECD0052	Use routine equipment/plant/technologies in an energy sector environment	40
UEECD0021	Identify and select components, accessories and materials for energy sector work activities	20
<b>ELECTIVE</b>		
HLTAID009	Provide cardiopulmonary resuscitation	4
UETDRRF004	Perform rescue from a live LV panel	6
UEECD0019	Fabricate, assemble and dismantle utilities industry components	40
UEECD0033	Produce products for carrying out energy sector work activities	40
UEECD0020	Fix and secure electrotechnology equipment	20
UEERL0001	Attach cords and plugs to electrical equipment for connection to a single phase 230 Volt supply	20

Course requires completion of units listed to achieve full qualification.

APPROX. TOTAL HOURS 400 depending on units

**SACE CREDITS:** Students can gain up to a maximum of 50 Stage 1 SACE Credits on completion of this qualification, dependent on units chosen.

**COURSE FEES:** Subsidised co-payment \$216- \$295.20 [+ \$170 textbook].

**TRAINING FORMAT:** Classroom and simulated work environment onsite.

**INCIDENTALS:** Students/Schools must purchase two course textbooks (Electrical Trade Practices 2e and Electrical Principles 4e), which can be purchased via TAFE SA at a cost of \$170 per student, or can be purchased via an alternate bookstore. Students must have the

following Personal Protective Equipment [that students must organise themselves approx. \$100] including: **Long sleeve hi-vis shirt; Long pants; Steel capped boots; Clear safety glasses.**

**SELECTION CRITERIA:** Students must meet VET for Secondary Schools Eligibility Criteria.

**DELIVERY LOCATION:** Berri, Elizabeth, Grand Junction Trade Training Centre, Mount Gambier, Noarlunga, Port Augusta, Port Pirie, Regency, Tonsley, Western Technical College, Whyalla and onsite by negotiation.

**CONTACT:** schools@tafesa.edu.au





## BUILDING & CONSTRUCTION





# PLUMBING

## CERTIFICATE II IN PLUMBING [PRE-APPRENTICESHIP] [22569VIC]

This qualification is designed to provide a pathway into a career within the plumbing industry. It includes a broad range of plumbing related skills and competencies and ensures students are work ready. Additional competencies for Year 12 students are available through Stackable VET and employment outcomes are predominantly achieved through an Australian Apprenticeship.

**TYPE OF COURSE:** Flexible Industry Pathway, suitable for Year 11 students.

**COURSE DELIVERY:** 1 day per week over 18 months [54 weeks/3 semesters].

**DAY, TIME & DATES:** Full days – day and times vary from location to location.

### COMPETENCIES DELIVERED:

Competencies and scheduled class time may differ from campus to campus.

NATIONAL CODE	UNIT NAME	NOMINAL HOURS
VU23046	Apply basic sheet metal practices	50
CPCCWHS2001	Apply WHS requirements, policies and procedures in the construction industry	20
CPCPCM2039A	Carry out interactive workplace communication	10
CPCCCM1015	Carry out measurements and calculations	20
VU23047	Cut and penetrate building materials and structures	30
VU23048	Fabricate simple plumbing pipe systems	30
VU23049	Identify career pathways in the plumbing industry	30
VU23050	Perform basic oxy-acetylene welding and cutting	20
VU23051	Prepare to work in the plumbing industry	20
CPCCWHS1001	Prepare to work safely in the construction industry	6
CUAACD303	Produce Technical Drawings	50
HLTAID010	Provide basic emergency life support	12
CPCCCM2001	Read and interpret plans and specifications	36
VU23052	Use and apply basic levelling equipment for plumbing	8
VU23053	Use basic electric welding equipment and techniques	20
VU23054	Use basic plumbing hand tools	50
VU23055	Use basic power tools	20
VU23056	Use plumbing pipes, fittings and fixtures to simulate plumbing installations	30
BSBWRT311	Write simple documents	30

Course requires 19 core units to complete qualification.

APPROX. TOTAL HOURS 492 depending on units

**SACE CREDITS:** Students can gain up to a maximum of 65 Stage 1 SACE Credits on completion of this course.

**COST:** Approx. \$293 - \$296 depending on units chosen.

**TRAINING FORMAT:** Classroom, online and workshop.

**INCIDENTALS:** Students must have the following Personal Protective Equipment [that students must organise themselves approx. \$100] including: **Long sleeve hi-vis shirt; Long pants; Steel capped boots; Clear safety glasses.**

**SELECTION CRITERIA:** Students must meet VET for Secondary Schools Eligibility Criteria.

**DELIVERY LOCATION:** Noarlunga, Elizabeth, Mount Gambier, Western Technical College.

**CONTACT:** schools@tafesa.edu.au





# BUSINESS & IT

## RETAIL

STACKABLE VET  
DESIGNED FOR YEAR 10  
AND YEAR 11 STUDENTS

### INTRODUCTION TO RETAIL

This course provides students with the necessary skills to engage and sell to the retail customer.

**COST:** \$428.00 pp

**DURATION:** 7 days

**NOMINAL HOURS:** 90

**CONTENT:** SIRXCEG001 Engage the customer

SIRXCOM001 Communicate in the workplace to support team and customer outcomes

SIRXSLS001 Sell to the retail customer

**DELIVERY LOCATION:** Adelaide, Noarlunga and Mount Gambier TAFE SA campuses

**SACE CREDITS:** Attracts 10 Stage 1 SACE Credits



# IT

## CERTIFICATE III IN INFORMATION TECHNOLOGY [ICT30120]

Develop technical skills in software application, cyber awareness, digital media, generalist IT support services, networking, programming, systems and web development.

Throughout this course you will also build industry essential skills that are transferable across multiple sectors. Skills such as critical thinking, problem solving, presenting and customer service to support a range of technologies, processes, policies and clients.

This course also offers a pathway to future study, including:

- > Certificate IV in Information Technology [ICT40120] [Systems Administration Support], [Networking], [Programming], [Web Development], [Cyber Security – 22603VIC]
- > Diploma of Information Technology [ICT50220], [System Administration Support & Cloud Engineering], [Advanced Networking & Cloud Engineering], [Advanced Programming], [Back End Web Development], [Cyber Security]

**COURSE TYPE:** Flexible Industry Pathway, suitable for Year 11 students.

**COURSE DELIVERY:** 1 day per week over 12-18 months (37 or 46 weeks). The 12-18 months delivery will include a minimum of 6 hours of contact per week, plus an expectation of another 6 hours of self-study time.

**DAY, TIME & DATES:** Students can either attend TAFE SA for one day\* a week release for classroom led courses\*.

Schools would be expected to make sure students have time to adequately study the material and have appropriate staff available for support.

Schools can augment the TAFESA delivery as they see fit for their cohort of student and timetables etc.

Students coming in Mid-Year can start with Semester 2 schedule followed by Semester 1, then Semester 3

\*Face-to-face classes only at TAFE SA Elizabeth, Adelaide City, Berri and Mount Barker Campuses. Online classes are available also.

**RECOMMENDATION:** It is recommended that students do not have a full study band at school if they wish to also study at TAFE SA.

### COMPETENCIES DELIVERED:

**NOTE:** Competencies and scheduled class time may differ from campus to campus.

NATIONAL CODE	UNIT NAME	NOMINAL HOURS
BSBCRT301	Develop and extend critical and creative thinking skills	40
BSBXCS303	Securely manage personally identifiable information and workplace information	40
BSBXTW301	Work in a team	40
ICTICT313	Identify IP, ethics and privacy policies in ICT environments	50
ICTPRG302	Apply introductory programming techniques	40
ICTSAS305	Provide ICT advice to clients	40
BSBXCS402	Promote workplace cyber security awareness and best practices	40
BSBXCS302	Identify and report online security threats	30
ICTWEB431	Create and style simple markup language documents	40
ICTSAS308	Run standard diagnostic tests	20
ICTNWK311	Install and test network protocols	40
BSBXCS301	Protect own personal online profile from cyber security threats	30

**Course requires 6 core and 6 electives units to complete the qualification. TOTAL HOURS 450**

**SACE CREDITS:** Students can gain a maximum of 65 Stage 2 SACE Credits on completion of this qualification, dependent on units chosen.

**COURSE FEES:** Subsidised co-payment \$1,215.00.

**TRAINING FORMAT:** Campus or online.

**INCIDENTALS:** This course also has an incidentals cost of approx. \$300 for 1TB SSD portable hard drive, webcam and headset with microphone which students must purchase themselves prior to course commencement.

**SELECTION CRITERIA:** Students must meet VET for Secondary Schools Eligibility Criteria.

**DELIVERY LOCATION:** Adelaide, Elizabeth, Berri. Other locations, onsite (pending site visit) and online delivery available upon negotiation with TAFE SA.

**CONTACT:** schools@tafesa.edu.au

# COMMUNITY SERVICES

If you're passionate about people and social justice, get the skills to work in the community, and be a part of something bigger. Community services workers work with the aged, people with disabilities, or those in need of refuge or advocacy. They can also promote social benefit to the community through recreation, education and employment.



Use your passion for people and social justice to help to build healthy, resilient communities.



## CERTIFICATE II IN COMMUNITY SERVICES [CHC22015]

This course provides skills for working within the broader community services as well as transferable skills for many other industries. It is an entry level course. Not all elective units are included below; alternative units may be selected, in consultation with TAFE SA staff, to suit schools' individual needs.

This qualification may be used as a pathway for workforce entry as community services workers who provide a first point of contact and assist individuals in meeting their immediate needs. At this level, work takes place under direct, regular supervision within clearly defined guidelines.

Further study pathways include:

- > Certificate III in Community Services [CHC32015]
- > Certificate III in Early Childhood Education and Care [CHC30113]
- > Certificate III in Individual Client Support [CHC33015]

**TYPE OF COURSE:** Flexible Industry Pathway for Year 11 students.

**COURSE DELIVERY:** 1 day per week over (32 weeks). Some locations (Victor Harbor, Murray Bridge and Port Pirie) delivery 2 days per week over 1 semester (20 weeks) or block workshops over 6 months, to be prearranged by the schools prior to course commencement.

**DAY, TIME & DATES:** Commences in February – various end dates depending on delivery site and individual programs.

**RECOMMENDATION:** This course is recommended for students who would like to explore further studies in careers that are focused on people and their communities. It will provide students with vocational pathways to transition into further Certificate III studies in areas such as Childcare, Community Services, Aged Care.

**COURSE SUMMARY:** This course is designed for schools with a minimum group of 15 participants. Not all elective units are included below, alternative units may be selected to suit schools' individual needs.

### COMPETENCIES DELIVERED:

Competencies and scheduled class time may differ from campus to campus.

NATIONAL CODE	CORE/ELECTIVE UNIT NAME	NOMINAL HOURS
	<b>CORE</b>	
CHCCOM005	Communicate and work in health or community services	30
BSBWOR202	Organise and complete daily work activities	20
HLTWHS001	Participate in workplace health and safety	20
CHCCOM001	Provide first point of contact	35
CHCDIV001	Work with diverse people	40
	<b>ELECTIVE</b>	
CHCCCS016	Respond to client needs	60
HLTWHS006	Manage personal stressors in the work environment	25
CHCDIV002	Promote Aboriginal and/or Torres Strait Islander cultural safety	25
HLTAID010	Provide basic emergency life support	12
Course requires 5 core and 4 elective units, other units by negotiation. APPROX. TOTAL HOURS 210-280 depending on units		

**SACE CREDITS:** Students can gain up to a maximum of 40 Stage 1 SACE Credits on completion of this qualification, dependent on units chosen.

**COURSE FEES:** Subsidised co-payment \$126-\$168.

**TRAINING FORMAT:** To be discussed further with schools/ partnerships however delivery design includes online facilitation via Blackboard Collaborate and compulsory workshops as determined by the partnership. Some independent delivery will be required depending on delivery method selected.

**INCIDENTALS:** None.

**DELIVERY LOCATION:** Regency, Whyalla, Port Augusta, Port Pirie, Murray Bridge, Victor Harbor or as requested by the school.

**CONTACT:** schools@tafesa.edu.au

# COMMUNITY SERVICES

## EARLY CHILDHOOD EDUCATION

### CERTIFICATE III IN EARLY CHILDHOOD EDUCATION AND CARE [CHC30121]

Develop the skills and knowledge you need to inspire and support children as an Early Childhood Educator. You could work in a childcare, preschool, classroom, out-of-school-hours care or even a community education setting.

The Certificate III in Early Childhood Education and Care is the minimum requirement for employment in the early childhood industry.

**COURSE TYPE:** Flexible Industry Pathway for Year 11 students.

**COURSE DELIVERY:** 1 day per week over 2 years (76 weeks).

**Year 1** – 1 day per week, 35 weeks

**Year 2** – 1 day per week, 35 weeks

**DAY, TIME & DATES:** Thursday, 9:00am-4:30pm, February to December [may vary depending on campus]. Not all units are offered during regular school hours and students may need to attend classes outside of school hours. Negotiation may occur regarding additional time for vocational placement due to training package requirements.

**SACE CREDITS:** Students can gain up to a maximum of 155 Stage 2 SACE Credits on completion of this qualification, dependent on units chosen.

**COURSE FEES:** Subsidised co-payment \$2964.60.

**TRAINING FORMAT:** Online delivery, virtual and physical face-to-face workshops and simulated work environment on campus.

#### COMPETENCIES DELIVERED:

NATIONAL CODE	CORE/ELECTIVE UNIT NAME	NOMINAL HOURS
	<b>CORE UNITS</b>	
CHCECE056	Work effectively in children's education & care	65
CHCECE034	Use an approved learning framework to guide practice	80
CHCECE055	Meet legal & ethical obligations in children's education and care	60
CHCPRT001	Identify & respond to children & young people at risk	40
CHCECE031	Support children's health, safety & wellbeing	160
HLTWHS001	Participate in workplace health and safety	20
HLTAID012	Provide an emergency first aid response in an education and care setting	22
CHCECE033	Develop positive & respectful relationships with children	100
CHCECE035	Support the holistic learning and development of children	100
CHCECE032	Provide care for babies & toddlers	108
CHCECE038	Observe children to inform practice	40
CHCECE036	Provide experiences to support children's play & learning	75
CHCECE030	Support Inclusion & Diversity	63
CHCECE054	Promote understanding of Aboriginal and/or Torres Strait islander cultures	55
CHCECE037	Support children to connect with the natural environment	50
	<b>ELECTIVE UNITS</b>	
HLTFSE001	Follow basic food safety practices	30
BSBPEF301	Organise personal workplace priorities	30

**Course requires 15 core and 3 electives units to complete qualification. APPROX. TOTAL HOURS 1098 depending on units**

**INCIDENTALS:** Students are required to pay for a **National Police Check** [approx \$65]. **DHS Screening Check** is free for school students undertaking work placement. Students are required to pay for **Through their eyes training** [\$75.00] [subject to change] required before attending vocational placement – will be held in Term 1. Anyone working with or providing services for Children in South Australia is a mandated notifier. This course provides information pertaining to the *Children and Young People [Safety] Act 2017* and the associated obligations as a mandated notifier.

**SELECTION CRITERIA:** Students must meet VET for Secondary Schools Eligibility Criteria.

**DELIVERY LOCATION:** Elizabeth, Regency, Noarlunga, Mount Barker, Barossa, Berri, Mount Gambier, Murray Bridge, Port Lincoln, Port Pirie, Victor Harbor, Whyalla

and other regional and metro locations available by negotiation.

**OTHER INFORMATION:** Upon request, a person doing a placement in an education or early childhood setting might be asked to provide proof of their vaccination status.

To achieve this qualification, the candidate must have completed at least 160 hours of vocational placement as detailed in the Assessment Requirements of the units of competency. Vocational placement includes 24 days x 7 hours of vocational placement from 9.00-4.30 with a 30-minute lunch break in a regulated education and care program. Placement days will be scheduled to commence in term 2 in the first year and are in addition to scheduled class days in line with required assessment tasks over the two years.

**CONTACT:** schools@tafesa.edu.au

# INDIVIDUAL SUPPORT

## CERTIFICATE III IN INDIVIDUAL SUPPORT [AGEING] [CHC33015]

Individual support workers play a vital role in helping to meet the needs of our ageing population. They are empathetic, patient and detail-oriented carers who assist in promoting the wellbeing and independence of older people.

The Certificate III in Individual Support [Ageing] is a course teaching the theory, skills and practices required to begin a rewarding career in the aged care sector. This course provides skills for work primarily undertaken in residential aged care facilities under direct or regular supervision within clearly defined organisational policies, guidelines and service delivery plans. It is also accepted by various community-based service providers.

Further study pathways include:

> Diploma in Nursing [HLT54115]

**COURSE TYPE:** Flexible Industry Pathway for Year 11 students.

**COURSE DELIVERY:** 1 day per week over 56 weeks 8: 30am-4:00pm daily.

**DAY, TIME & DATES:** Part-time, days and time vary by campus. Not all units are offered during regular school hours and students may need to attend classes outside of school hours. Placement may occur during school holidays.

**RECOMMENDATION:** It is recommended that students do not have a full study band at school if they wish to also study this qualification at TAFE SA.

### COMPETENCIES DELIVERED:

Competencies and scheduled class time may differ from campus to campus.

NATIONAL CODE	UNIT NAME	NOMINAL HOURS
	<b>CORE</b>	
CHCCCS015	Provide individualised support	30
CHCCCS023	Support independence and wellbeing	80
CHCCOM005	Communicate and work in health or community services	30
CHCDIV001	Work with diverse people	40
CHCLEG001	Work legally and ethically	55
HLTAAP001	Recognise healthy body systems	70
HLTWHS002	Follow safe work practices for direct client care	25
	<b>ELECTIVE</b>	
CHCAGE001	Facilitate the empowerment of older people	50
CHCAGE005	Provide support to people living with dementia	65
CHCCCS011	Meet personal support needs	60
HLTINF001	Comply with infection prevention and control policies and procedures	25
CHCAGE002	Implement falls prevention strategies	40
HLTAID011	Provide First Aid	18

Course requires 7 core and 6 elective units, other units by negotiation.  
APPROX. TOTAL HOURS 570-602 depending on units

**SACE CREDITS:** Students can gain between 80- 85 Stage 2 SACE Credits on completion of this qualification, dependent on units chosen.

**COURSE FEES:** Subsidised co-payment \$1,539-\$1,625.50.

**TRAINING FORMAT:** - Blended Methodology [Workshops are a mix of virtual and face to face classes, including simulated learning in a skills lab].

**INCIDENTALS:** Students are required to pay for a **National Police Check** refer to SAPOL website for current pricing – [www.police.sa.gov.au](http://www.police.sa.gov.au). **DHS and NDIS Screening check** is free for School students undertaking work placement. There is a **\$35 incidentals fee for a TAFE SA shirt to wear during work placement. A compulsory Manual Tasks 6 hour workshop is required by industry** to meet placement requirements and is \$154 per student.

**SELECTION CRITERIA:** Students must meet VET for Secondary Schools Eligibility Criteria.

**DELIVERY LOCATION:** Barossa, Port Lincoln, Whyalla, Mount Gambier, Salisbury, Noarlunga, Victor Harbor and other regional locations by negotiation.

**OTHER INFORMATION:** Prior to placement allocation students must provide evidence of full immunisation status including, but not limited to COVID-19 and flu vaccinations as per the Immunisation for Health Care Workers in South Australia Policy Directive.

To achieve this qualification, the candidate must have completed at least 120 hours of vocational placement as detailed in the Assessment Requirements of the units of competency.

**CONTACT:** [schools@tafesa.edu.au](mailto:schools@tafesa.edu.au)

# COMMUNITY SERVICES

## CERTIFICATE III IN INDIVIDUAL SUPPORT [DISABILITY] [CHC33015]

Develop the skills to support individuals with disability, living in the community and/or supported accommodation. Learn about independence and wellbeing, communication, working with diverse people, legal and ethical requirements, healthy body systems and safe work practices.

Further study pathways include:

- > Diploma in Nursing [HLT54115]

**COURSE TYPE:** Flexible Industry Pathway, suitable for Year 11 students.

**COURSE DELIVERY:** 1 day per week over 56 weeks 8: 30am-4:00pm daily.

**DAY, TIME & DATES:** Part-time, days and times vary by campus. Not all units are offered during regular school hours and students may need to attend classes outside of school hours. Placement may occur during school holidays.

**RECOMMENDATION:** It is recommended that students do not have a full study band at school if they wish to also study this qualification at TAFE SA.

**COMPETENCIES DELIVERED:** Competencies and scheduled class time may differ from campus to campus.

**SACE CREDITS:** Students can gain between 80-85 Stage 2 SACE Credits on completion of this qualification, dependent on units chosen.

**COURSE FEES:** - Subsidised co-payment \$1,587.60-\$1,674.

**TRAINING FORMAT:** - Blended Methodology [Workshops are a mix of virtual and face to face classes, including simulated learning in a skills lab].

**INCIDENTALS:** Students are required to pay for a **National Police Check** refer to SAPOL website for current pricing – [www.police.sa.gov.au](http://www.police.sa.gov.au). **DHS and NDIS Screening check** is free for School students undertaking work placement. A **compulsory Manual Tasks 6 hour workshop is required by industry** to meet placement requirements and is \$154 per student.

**SELECTION CRITERIA:** Students must meet VET for Secondary Schools Eligibility Criteria.

**DELIVERY LOCATION:** Barossa, Whyalla, Mount Gambier, Salisbury, Noarlunga, Victor Harbor and other regional locations by negotiation.

**OTHER INFORMATION:** Prior to placement allocation students must provide evidence of full immunisation status including, but not limited to COVID-19 and flu vaccinations as per the Immunisation for Health Care Workers in South Australia Policy Directive.

To achieve this qualification, the candidate must have completed at least 120 hours of vocational placement as detailed in the Assessment Requirements of the units of competency.

**CONTACT:** [schools@tafesa.edu.au](mailto:schools@tafesa.edu.au)

NATIONAL CODE	CORE/ELECTIVE UNIT NAME	NOMINAL HOURS
	<b>CORE</b>	
CHCCCS015	Provide individualised support	30
CHCCCS023	Support independence and well being	80
CHCCOM005	Communicate and work in health or community services	30
CHCDIV001	Work with diverse people	40
CHCLEG001	Work legally and ethically	55
HLTAAP001	Recognise healthy body systems	70
HLTWS002	Follow safe work practices for direct client care	25
	<b>ELECTIVE</b>	
CHCDIS001	Contribute to ongoing skills development using a strengths-based approach	40
CHCDIS002	Follow established person-centred behaviour supports	50
CHCDIS003	Support community participation and social inclusion	60
CHCDIS007	Facilitate the empowerment of people with disability	100
HLTINF001	Comply with infection prevention and control policies and procedures	25
CHCCCS026	Transport Individuals	20
Course requires 7 core and 6 elective units, other units by negotiation		
APPROX. TOTAL HOURS 588-620 depending on units		





**STUDENTS CAN DEVELOP  
THE SKILLS AND  
COMMUNICATION TOOLS  
NEEDED TO PROVIDE  
SUPPORT TO OLDER  
PEOPLE, CHILDREN  
AND PEOPLE WITH  
DISABILITIES.**



# HAIR & BEAUTY

Combine your creativity and people skills with a career in hair and beauty. Learn from TAFE SA's industry expert lecturers and carve out a career helping others to look and feel beautiful.

## HAIRDRESSING



STACKABLE VET DESIGNED FOR YEAR 12 STUDENTS	<b>ADVANCED HAIR STYLING</b> This course equips students with skills in creating finished hair designs, treating scalp conditions and creating classic long hair up-styles.	
	<b>COST:</b> \$2081.00 pp <b>DURATION:</b> 27 days + 50 hours homework <b>NOMINAL HOURS:</b> 145 <b>PRE-REQUISITES:</b> For students who have completed Certificate II in Salon Assistant and are working part-time in a salon	<b>CONTENT:</b> SHBHDES003 Create finished hair designs SHBHTRI001 Identify and treat hair and scalp conditions SHBXWHS003 Apply safe hygiene, health and work practices SHBHDES004 Create classic long hair up-styles <b>LOCATIONS:</b> Adelaide, Noarlunga, Mount Gambier TAFE SA campus. <b>SACE CREDITS:</b> Attracts 20 Stage 2 SACE Credits
STACKABLE VET DESIGNED FOR YEAR 12 STUDENTS	<b>ADVANCED BEAUTY SERVICES</b> This course equips students with skills in applying cosmetic tanning products, and providing lash & brow as well as waxing services to clients.	
	<b>COST:</b> \$2081.00 pp <b>DURATION:</b> 30 days <b>NOMINAL HOURS:</b> 150	<b>CONTENT:</b> SHBBBOS007 Apply cosmetic tanning products SHBBFAS004 Provide lash and brow services SHBBHRS010 Provide Waxing services <b>LOCATIONS:</b> Adelaide, Elizabeth, Noarlunga <b>ADDITIONAL COSTS:</b> Students will need to purchase tweezers, 2 small glass bowls, a large stainless steel bowl and a bath towel <b>SACE CREDITS:</b> Attracts 20 Stage 2 SACE Credits

## CERTIFICATE II IN SALON ASSISTANT [SHB20216]

If you have a passion for hairdressing or barbering, this course is your training pathway.

You'll gain practical skills in hairdressing and barbering, as well as learn about interacting with clients and providing hairdressing and barbering services, as well as developing skills to become an integral part of a highly creative team.

**COURSE TYPE:** Flexible Industry Pathway, suitable for Year 11 students.

**COURSE DELIVERY:** 1 day per week over 3 terms. 9am to 4pm daily.

**RECOMMENDATION:** It is recommended that students do not have a full study band at school if they wish to also study at TAFE SA.

### COMPETENCIES DELIVERED:

NATIONAL CODE	UNIT NAME	NOMINAL HOURS
	<b>CORE</b>	
BSBWHS201	Contribute to health and safety of self and others	20
SHHBAS001	Provide shampoo and basin services	40
SHBHDES001	Dry hair to shape	40
SHBHIND001	Maintain and organise tools, equipment and work areas	20
SHBXCCS001	Conduct salon financial transactions	25
SHBXCCS003	Greet and prepare clients for salon services	10
SHBXIND001	Comply with organisational requirements within a personal services environment	45
SHBXIND002	Communicate as part of a salon team	30
	<b>ELECTIVE</b>	
SHHBAS002	Provide head, neck and shoulder massages for relaxation	20
SHBXCCS004	Recommend products and services	20
SIRRMER001	Produce visual merchandise displays	35
SHBHIND002	Research and use hairdressing industry information	15

Course requires 8 core and 4 electives units to complete qualification  
APPROX. TOTAL HOURS 315-325 depending on units

**SACE CREDITS:** Students can gain up to a maximum of 45 Stage 1 SACE Credits on completion of this qualification, dependent on units chosen.

**COURSE FEES:** Subsidised co-payment \$189-\$195.

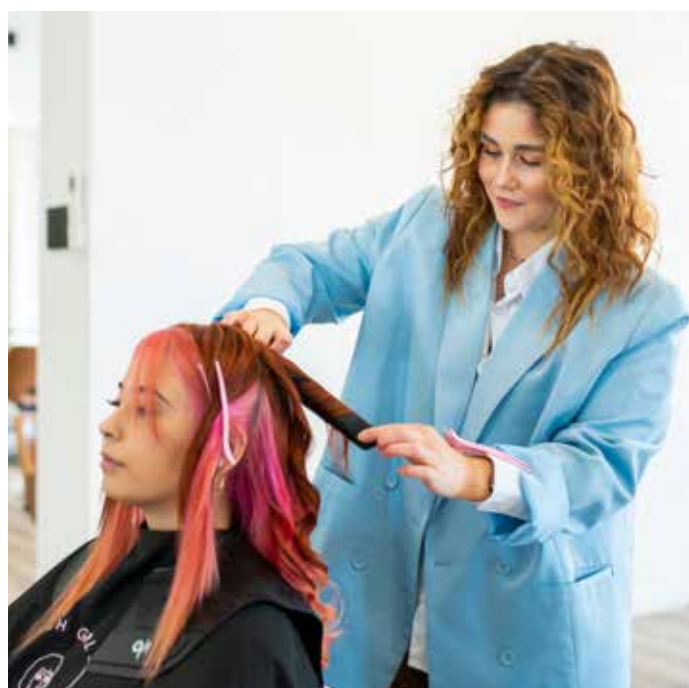
**TRAINING FORMAT:** Simulated salon, classroom and online.

**INCIDENTALS:** Students are required to purchase a **student equipment kit** – \$145 provided by external supplier price subject to change. It is a requirement that a **black shirt and black pants** are worn as per workplace standards. An **optional TAFE SA t-shirt** is available for purchase – \$40.

**SELECTION CRITERIA:** Students must meet VET for Secondary Schools Eligibility Criteria.

**DELIVERY LOCATION:** Adelaide, Berri, Elizabeth, Mount Gambier, Noarlunga, Port Pirie, Western Technical College, Whyalla, onsite and other locations by negotiation.

**CONTACT:** schools@tafesa.edu.au



‘I studied TAFE SA’s course at school, learning to wash and blow dry hair and apply all over colours. This put me at a huge advantage when finding my apprenticeship and made me feel comfortable in a salon environment.’

Taylah  
TAFE SA hairdressing graduate



# HAIR & BEAUTY

## BEAUTY

### CERTIFICATE II IN RETAIL COSMETICS (SHB20121)

The Certificate II in Retail Cosmetics is the ideal qualification to start your career in the make-up or beauty industry. You will learn a range of skills to provide make-up for varying occasions, client care, sell and recommend beauty products to an industry standard.

**COURSE TYPE:** Flexible Industry Pathway, suitable for Year 11 students.

**COURSE DELIVERY:** 1 day per week over 30 weeks. 9am-5pm daily

**RECOMMENDATION:** It is recommended that students do not have a full study band at school if they wish to also study at TAFE SA.

#### COMPETENCIES DELIVERED:

NATIONAL CODE	UNIT NAME	NOMINAL HOURS
	<b>CORE</b>	
SHBBCCS004	Demonstrate retail skin care products	25
SHBBCCS005	Advise on beauty products and services	30
SHBBMUP009	Design and apply make-up	45
SHBXCCS007	Conduct salon financial transactions	25
SHBXIND003	Comply with organisational requirements within a personal services environment	45
SHBXIND005	Communicate as part of a salon team	30
SHBXWHS003	Apply safe hygiene, health and work practices	40
SIRXIND003	Organise personal work requirements	20
SIRXOSM002	Maintain ethical and professional standards when using social media and online platforms	50
	<b>ELECTIVE</b>	
SHBBINF002	Maintain infection control standards	75
BSBSUS211	Participate in sustainable work practices	20
SHBBRES003	Research and apply beauty industry information	20
SIRRMER001	Produce visual merchandise displays	35
SIRXOSM003	Use social media and online tools	35
SHBXCCS009	Greet and prepare clients for salon services	10

Course requires 9 core and 6 electives units to complete qualification  
APPROX. TOTAL HOURS 505 depending on units

**SACE CREDITS:** Students can gain up to a maximum of 70 Stage 1 SACE Credits on completion of this qualification, dependent on units chosen.

**COURSE FEES:** Subsidised co-payment \$303.

**TRAINING FORMAT:** Simulated salon, classroom and online.

**INCIDENTALS:** Students are required to purchase a **student equipment kit** – \$210 provided by external supplier price subject to change. It is a requirement that a **black shirt and black pants** are worn as per workplace standards. An optional **TAFE SA t-shirt** is available for purchase – \$40.00.

**SELECTION CRITERIA:** Students must meet VET for Secondary Schools Eligibility Criteria.

**DELIVERY LOCATION:** Adelaide, Berri, Elizabeth, Mount Gambier, Noarlunga, Western Technical College, onsite and other locations by negotiation.

**CONTACT:** schools@tafesa.edu.au



**LEARN HOW TO  
HELP PEOPLE TO  
LOOK AND FEEL  
THEIR BEST.**



# HEALTH & LIFESTYLE

Work towards a healthier community. With TAFE SA's health and lifestyle qualifications, you can learn the necessary skills to work in the growing health industry, from allied health to dental, to sport and recreation, TAFE SA has got you covered.





# ALLIED HEALTH

## CERTIFICATE III IN ALLIED HEALTH ASSISTANCE [HLT33015]

This course provides you with the skills and knowledge to work in the growing health industry as an Allied Health Assistant. The Certificate III in Allied Health Assistance equips you with a solid understanding of how to assist with allied health programming, how to interpret basic medical terminology and how to comply with infection prevention and control policies. You will also learn the important skill of communicating effectively with both professionals and patients. Workers at this level will operate under direct or regular supervision within clearly defined organisational policies, guidelines, and service delivery plans.

Further study pathways include:

- > Certificate IV in Allied Health Assistance [HLT43015]
- > Diploma in Nursing [HLT54115]

**COURSE DELIVERY:** 1 day per week over 56 weeks. Please note 80 hours of work placement is required in addition to the listed course delivery.

**DAY, TIME & DATES:** Day and times vary, depending on delivery site and individual programs. Students should commence at start of semester.

**RECOMMENDATION:** It is recommended that students do not have a full study band at school if they wish to also study at TAFE SA.

**NOTE:** This qualification is in transition. Where students are required to transition, TAFE SA will communicate with and, counsel all students.

### COMPETENCIES DELIVERED:

**NOTE:** Competencies and scheduled class time may differ from campus to campus.

Timetables and elective units are subject to change to meet industry requirements.

NATIONAL CODE	CORE/ELECTIVE UNIT NAME	NOMINAL HOURS
<b>CORE</b>		
CHCCOM005	Communicate and work in health or community services	30
HLTAAP001	Recognise healthy body systems	70
HLTINF001	Comply with infection prevention and control policies and procedures	25
BSBMED301	Interpret and apply medical terminology appropriately	60
CHCDIV001	Work with diverse people	40
HLTWHS001	Participate in workplace health and safety	20
HLTAHA001	Assist with an allied health program	65
CHCCCS010	Maintain a high standard of service	30
<b>ELECTIVE</b>		
HLTAID011	Provide first aid	18
CHCCCS002	Assist with movement	25
HLTAID009	Provide Cardiopulmonary resuscitation	4
Course requires 8 core and 3 electives units to complete the qualification.		
APPROX. TOTAL HOURS 387		

**SACE CREDITS:** Students can gain between 55 Stage 2 SACE Credits on completion of this qualification, dependent on units chosen.

**COURSE FEES:** Subsidised co-payment approx. \$1,045.

**TRAINING FORMAT:** Blended Methodology [Workshops are a mix of virtual and face to face classes, including simulated learning in a skills lab].

**INCIDENTALS:** Students are required to pay for a **National Police Check** refer to SAPOL website for current pricing – [www.police.sa.gov.au](http://www.police.sa.gov.au). **DHS Screening check** is free for School students undertaking work placement. There is a \$35 incidentals fee for a TAFE SA shirt to wear during work placement.

**SELECTION CRITERIA:** Students must meet VET for Secondary Schools Eligibility Criteria.

Prior to placement allocation students must provide evidence of full immunisation status including, but not limited to COVID-19 and flu vaccinations as per the Immunisation for Health Care Workers in South Australia Policy Directive.

**DELIVERY LOCATION:** Adelaide, Berri, Murray Bridge, Mount Gambier, Mount Barker.

**CONTACT:** [schools@tafesa.edu.au](mailto:schools@tafesa.edu.au)



Students develop the skills to help create a healthier community.

## CERTIFICATE III IN HEALTH SERVICES ASSISTANCE [HLT33115]

Students will gain the skills to provide safe, high-quality care to clients, under supervision in a range of settings, including hospitals and aged care facilities. This course provides an excellent foundation for studies in allied health, aged care, disability and nursing.

Further study pathways include:

- > Certificate III in Individual Support – Ageing/Disability [CHC33015]
- > Certificate IV in Allied Health Assistance [HLT43015]
- > Diploma of Nursing [HLT54115]

**COURSE TYPE:** Flexible Industry Pathway, suitable for Year 11 students

**COURSE DELIVERY:** 1 day per week over 56 weeks. Please note 80 hours of work placement is required in addition to the listed course delivery.

**DAY, TIME & DATES:** Day and times vary, depending on delivery site and individual programs. Students should commence at start of semester.

**RECOMMENDATION:** It is recommended that students do not have a full study band at school if they wish to also study at TAFE SA.

### COMPETENCIES DELIVERED:

**NOTE:** Competencies and scheduled class time may differ from campus to campus

NATIONAL CODE	UNIT NAME	NOMINAL HOURS
<b>CORE</b>		
HLTINF001	Comply with infection prevention and control policies and procedures	25
HLTAAP001	Recognise healthy body systems	70
CHCDIV001	Work with diverse people	40
BSBMED301	Interpret and apply medical terminology appropriately	60
HLTWS001	Participate in workplace health and safety	20
BSBWOR301	Organise personal work priorities and development	30
CHCCOM005	Communicate and work in health or community services	30
<b>ELECTIVE</b>		
HLTFSE001	Follow basic food safety practices	30
CHCCCS012	Prepare and maintain beds	15
CHCCCS026	Transport individuals	20
CHCCCS010	Maintain a high standard of service	30
HLTWS006	Manage personal stressors in the work environment	25
CHCCCS002	Assist with Movement	25
HLTAID011	Provide first aid	18
HLTAID009	Provide cardiopulmonary resuscitation	4

**Course requires 7 core and 8 electives units to complete the qualification.**

**APPROX. TOTAL HOURS 442-570 depending on units**

**SACE CREDITS:** Students can gain between 55-80 Stage 2 SACE Credits on completion of this qualification, dependent on units chosen.

**COURSE FEES:** Subsidised co-payment \$1,194-\$1,540.

**TRAINING FORMAT:** Blended Methodology [Workshops are a mix of virtual and face to face classes, including simulated learning in a skills lab].

**INCIDENTALS:** Students are required to pay for a **National Police Check** refer to SAPOL website for current pricing – [www.police.sa.gov.au](http://www.police.sa.gov.au). **DHS Screening check** is free for School students

undertaking work placement. There is a \$35 incidentals fee for a TAFE SA shirt to wear during work placement.

**SELECTION CRITERIA:** Students must meet VET for Secondary Schools Eligibility Criteria.

Prior to placement allocation students must provide evidence of full immunisation status including, but not limited to COVID-19 and flu vaccinations as per the Immunisation for Health Care Workers in South Australia Policy Directive.

**DELIVERY LOCATION:** Adelaide.

**CONTACT:** [schools@tafesa.edu.au](mailto:schools@tafesa.edu.au)



SPORT AND RECREATION

STACKABLE VET DESIGNED  
FOR YEAR 12 STUDENTS

ADVANCED GYM BASED PROGRAMS FOR INDIVIDUAL CLIENTS

This course equips students with skills and knowledge in facilitating gym based programs for individual clients.

**COST:** \$1665.00 pp

**DURATION:** 16 days

**NOMINAL HOURS:** 150

**CONTENT:** SISFFIT040

Develop and instruct gym based exercise programs for individual clients

SISFFIT047

Use anatomy and physiology knowledge to support safe and effective exercise

**LOCATIONS:** TAFE SA Regency campus

**SACE CREDITS:** Attracts 10 Stage 2 SACE Credits



# HOSPITALITY & TOURISM

Build a career in hospitality and tourism. Food, beverage, tourism, events and travel are always in demand, leading to a growing range of career opportunities. TAFE SA delivers a range of courses to prepare you for a career in the hospitality, events and tourism industries.



## BAKING

### CERTIFICATE II IN FOOD PROCESSING – SPECIALISING IN BAKING [FBP20121]

This certificate provides a great introduction to baking covering basic problem solving and production skills, routine baking functions, with customer service, general preparation and cleaning skills. Hands on practical skills will be learnt to produce a wide range of bakery products, covering breads, cakes and pastries. Products made include sandwich bread, finger buns, donuts, apple pies, pasties, meat pies, sponges, fruit cakes, mud cakes and muffins.

This course is a great stepping stone for those budding bakers, at home or looking to gain an apprenticeship.

**COURSE TYPE:** Flexible Industry Pathway, suitable for Year 11 students.

**COURSE DELIVERY:** 1 day per week over 33 weeks.

**DAY, TIME & DATES:** TAFE SA Regency [Tuesday], Birdwood High [Wednesday], times to be confirmed.

**RECOMMENDATION:** Students aged 16 years and older looking for Stage 1 SACE credits [60 credits].

#### COMPETENCIES DELIVERED:

Not all units listed below are offered in the part time group during normal school hours. Students will need to attend other classes to meet all the competencies.

**NOTE:** Competencies and scheduled class time may differ from campus to campus.

NATIONAL CODE	UNIT NAME	NOMINAL HOURS
	<b>CORE</b>	
FBPWHS2001	Participate in work health and safety processes	40
FBPOPR2071	Provide and apply workplace information	30
FBPFSY2002	Apply food safety procedures	30
FBPOPR2096	Follow procedures to maintain good manufacturing practice in food processing	40
	<b>ELECTIVE</b>	
MSMENV272	Participate in environmentally sustainable work practices	30
FBPOPR2069	Use numerical applications in the workplace	30
FBPHVB2001	Freeze and thaw dough	20
SIRXPK001	Advise on products and services	30
FBPOPR2095	Clean and sanitise equipment	30
FBPOPR1012	Prepare basic mixes	20
FBPRBK2001	Assist non-laminated pastry production	70
FBPRBK2004	Assist basic bread production	60
FBPRBK2003	Assist sponge cake production	80

**This course requires 4 core and 9 elective units to complete the qualification. APPROX. TOTAL HOURS 510 depending on units.**

**SACE CREDITS:** Students can gain up to 70 Stage 1 SACE Credits on completion of this qualification, dependent on units chosen.

**COURSE FEES:** Subsidised co-payment \$306.

**TRAINING FORMAT:** Classroom and simulated work environment.

**INCIDENTALS:** Students must have an appropriate apron and hat in accordance with WHS and Food Safety requirements. Students will have the choice of purchasing **TAFE SA apron and hat [\$25]**, OR **providing their own** OR **utilising what is available at the host school providing they meet WHS and Food Safety requirements**. For training at TAFE SA Regency, incidental cost of \$200 applies for tools and uniform.

**SELECTION CRITERIA:** Students must meet VET for Secondary Schools Eligibility Criteria.

**DELIVERY LOCATION:** TAFE SA Regency, Birdwood High School.

**CONTACT:** schools@tafesa.edu.au

Turn your  
passion into  
a career in  
hospitality  
and tourism.



# HOSPITALITY

STACKABLE VET DESIGNED FOR  
YEAR 10 AND YEAR 11 STUDENTS

## INTRODUCTION TO BARISTA

This course provides students with the skills to prepare and serve espresso coffee and use hygienic practices for food safety.

**COST:** \$350.00 pp

**DURATION:** 4 days

**NOMINAL HOURS:** 45

**CONTENT:** SITHFAB025 Prepare and serve espresso coffee  
SITXFSA005 Use hygienic practices for food safety

**LOCATIONS:** Regency, Barossa, Noarlunga, Mount Gambier, Port Pirie, Whyalla, Port Lincoln, and Berri TAFE SA campuses.

**SACE CREDITS:** Attracts 5 Stage 1 SACE Credits



# HOSPITALITY & TOURISM

## CERTIFICATE II IN HOSPITALITY [SIT20322]

Training in our hospitality courses will provide you with the knowledge and skills to work within the hospitality industry, locally, nationally and internationally.

You will gain practical experience in preparation of food and beverage service as well as mastering the art of coffee service. All our courses are taught by highly qualified industry professionals supported by real hospitality experiences in our campus cafés or restaurants.

**COURSE TYPE:** Flexible Industry Pathway, suitable for Year 11 students.

**COURSE DELIVERY:** 1 day per week over 30 weeks [165 classroom hours].

- > 120 hours block release training available [café/restaurant practical]
- > Directed study hours [non-contact, including self-paced learning activities, research, completing student tasks] approx. 4 hours per week
- > 100 hours vocational placement [note, may include some hours from café/restaurant practical]

**DAY, TIME & DATES:** Not all units listed below are offered during normal school hours. Students will need to attend other classes to meet all the competencies.

**RECOMMENDATION:** It is recommended that students do not have a full study band at school if they wish to also study at TAFE SA.

### COMPETENCIES DELIVERED:

Competencies and scheduled class time may differ from campus to campus.

NATIONAL CODE	UNIT NAME	NOMINAL HOURS
	<b>CORE</b>	
BSBTWK201	Work effectively with others	40
SITHIND006	Source and use information on the hospitality industry	25
SITXCCS011	Interact with Customers	20
SITXCOM007	Show social and cultural sensitivity	20
SITXWHS005	Participate in safe work practices	12
SITHIND007	Use hospitality skills effectively	10
	<b>ELECTIVE</b>	
SITXFSA005	Use hygienic practices for food safety	15
SITHFAB027	Serve food and beverage	80
SITHFAB024	Prepare and serve non-alcoholic beverages	20
SITHFAB021	Provide responsible service of alcohol	10
SITHFAB022	Clean and tidy bar areas	15
SITHFAB025	Prepare and serve espresso coffee	30

**This course requires 6 core and 6 elective units, other units by negotiation. APPROX. TOTAL HOURS 302-327 depending on units**

**SACE CREDITS:** Students can gain between 40-45 Stage 1 SACE Credits on completion of this qualification, dependent on units chosen.

**COURSE FEES:** Subsidised co-payment \$181.20-\$196.20.

**TRAINING FORMAT:** Classroom, simulated work environment onsite.

**INCIDENTALS:** There is a \$40 incidentals fee for this course which covers the provision of TAFE SA program uniform including TAFE SA branded shirt and name-badge [students may keep these]. It is also suggested that students purchase black work pants and black shoes. Students may also be required to purchase a Waiters Friend tool [Approx. \$13].

**SELECTION CRITERIA:** Students must meet VET for Secondary Schools Eligibility Criteria.

**DELIVERY LOCATION:** TAFE SA campuses Barossa, Berri, Mount Barker, Mount Gambier, Noarlunga, Pt Lincoln, Regency or onsite at schools (approved inspection required).

**CONTACT:** schools@tafesa.edu.au

# COOKERY

## CERTIFICATE II IN COOKERY [SIT20421]

This qualification is the pathway to commercial cookery. Certificate II in Cookery (SIT20421) is an introductory qualification and reflects the role of individuals working in kitchens who use a defined range of food preparation and cookery skills.

**COURSE TYPE:** Flexible Industry Pathway, suitable for Year 11 students.

**COURSE DELIVERY:** 1 day per week over 35 weeks.

**DAY, TIME & DATES:** Day and times vary from location to location.

### COMPETENCIES DELIVERED:

All units listed are offered in the part-time group during normal school hours.

Elective units delivered are subject to change per delivery location.

**SACE CREDITS:** Students can gain up to 55 Stage 1 SACE Credits on completion of this qualification, dependent on units chosen.

**COURSE FEES:** Subsidised co-payment \$246.

**TRAINING FORMAT:** Kitchen, classroom and simulated work environment.

**INCIDENTALS:** Students undertaking Certificate II in Kitchen Operations are required to wear a Commercial Cookery uniform: **traditional chef trousers** [chequered]; **white chefs jacket** [double breasted]; **white 3/4 wait apron**; **white flat top [skull] cap**; **1 hairnet**; **3 tea towels**; **knives** – Where possible students are asked to supply their own knife kit with at least a 25 cm chef's knife, 10 cm paring knife and peeler as a minimum. An approximate cost for these items will be between \$100 to \$150.00. Each TAFE SA campus can advise students on suppliers. Please note: Some TAFE SA campuses will supply knives for use during class but students will need to enquire with the TAFE SA campus they are attending on what may be available as items are limited.

National Code	Unit Name	Nominal Hours
<b>Core (7 required)</b>		
SITXFSA005	Use hygienic practices for food safety	15
SITHKOP009	Clean kitchen premises and equipment	13
SITXINV006	Receive, store and maintain stock	20
SITXWHS005	Participate in safe work practices	12
SITHCCC023	Use food preparation equipment	25
SITHCCC027	Prepare dishes using basic methods of cookery	45
SITHCCC034	Work effectively in a commercial kitchen	60
<b>Elective (6 required)</b>		
SITHCCC029	Prepare stocks, sauces and soups	35
SITHCCC024	Prepare and present simple dishes	25
SITHCCC028	Prepare appetisers and salads	25
SITHASC021	Prepare Asian appetisers and snacks	45
SITHCCC030	Prepare vegetable, fruit, egg and farinaceous dishes	50
SITXFSA006	Participate in safe food handling practices	40
		<b>TOTAL HOURS 410</b>

**SELECTION CRITERIA:** Students must meet VET for Secondary Schools Eligibility Criteria.

**DELIVERY LOCATION:** Barossa, Berri, Elizabeth, Mount Gambier, Noarlunga, Port Lincoln, Port Pirie, Regency. Whyalla and Mount Barker locations available upon negotiation with TAFE SA. Can be delivered on site at other schools – approved inspection required.

**CONTACT:** schools@tafesa.edu.au





# HOSPITALITY & TOURISM

## TOURISM AND EVENTS

STACKABLE VET DESIGNED  
FOR YEAR 10 AND YEAR 11  
STUDENTS

### INTRODUCTION TO TOURISM

This course provides students with skills in sourcing and using information on the tourism and travel industry.

**COST:** \$986.00 pp

**DURATION:** 24 days

[delivered 2 days per week]

**NOMINAL HOURS:** 90

**CONTENT:** SITTIND003

Source and use information on the tourism and travel industry

SITTTVL001

Access and interpret product information

**LOCATIONS:** Regency TAFE SA campus

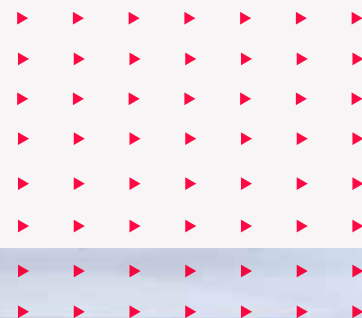
**SACE CREDITS:** Attracts 10 Stage 1 SACE Credits



If people skills are your strength and travel is your passion, consider a career in tourism.

# MINING, ENGINEERING & AUTOMOTIVE

TAFE SA provides industry-leading education for the mining, engineering and automotive industries. Students will learn from industry experts as they build the skills and knowledge needed by industry.



STACKABLE VET DESIGNED  
FOR YEAR 10 AND YEAR 11  
STUDENTS

## INTRODUCTION TO AUTOMOTIVE

This course equips students with skills in working safely and effectively in an automotive workshop environment. Students may progress into the Certificate II in Automotive Servicing Technology.

**COST:** \$1150

**DURATION:** 10 days

**NOMINAL HOURS:** 75

**CONTENT:**

<b>AURASA001</b>	Apply automotive workplace safety fundamentals
<b>AURLTJ113</b>	Remove, inspect and refit light vehicle wheel and tyre assemblies
<b>AURTTA002</b>	Assist with automotive workplace activities
<b>AURLTA101</b>	Identify automotive mechanical systems and components
<b>AUAFA002</b>	Read and respond to automotive workplace information

**DELIVERY LOCATIONS:** Elizabeth, Noarlunga, Mount Barker. Regional campus and school sites available upon negotiation

**SACE CREDITS:** Attracts 10 Stage 1 SACE Credits

## AUTOMOTIVE

### CERTIFICATE II IN AUTOMOTIVE SERVICING TECHNOLOGY [AUR20520]

Get the skills to identify, inspect and perform basic repairs to the mechanical and electrical components of light and heavy vehicles, outdoor power equipment, bicycles, marine craft and motorcycles. This entry-level qualification is designed to help you build a foundation of basic knowledge to help you prepare for a career in the automotive industry.

**COURSE TYPE:** Flexible Industry Pathway, suitable for Year 11 students.

**COURSE DELIVERY:** 1 day per week over 3 Semesters (65 weeks ). Block delivery available at some sites.

Block delivery is available at some sites.

**DAY, TIME & DATES:** Intakes commence in semester one and two each year, dates and times vary between locations.

**RECOMMENDATION:** Delivery hours may vary depending on the elective units undertaken.

#### COMPETENCIES DELIVERED:

Competencies and scheduled class time may differ from campus to campus.

**SACE CREDITS:** Students can gain up to 50 Stage 2 SACE Credits on completion of this qualification, dependent on units chosen.

**COURSE FEES:** Subsidised co-payment \$252.

**TRAINING FORMAT:** Classroom, online and workshop.

NATIONAL CODE	UNIT NAME	NOMINAL HOURS
<b>CORE</b>		
AURAEA002	Follow environmental and sustainability best practice in an automotive workplace	25
AURASA102	Follow safe working practices in an automotive workplace	20
AURATA001	Identify basic automotive faults using troubleshooting processes	20
AURETR115	Inspect, test and service batteries	10
AURTTA104	Carry out servicing operations	20
AURTTB101	Inspect and service braking systems	20
AURTTTC001	Inspect and service cooling systems	10
AURTTD002	Inspect and service steering systems	10
AURTTD004	Inspect and service suspension systems	10
AURTTE104	Inspect and service engines	20
AURTTK102	Use and maintain tools and equipment in an automotive workplace	20
AURTTQ001	Inspect and service final drive assemblies	5
AURTTQ103	Inspect and service drive shafts	5
<b>ELECTIVES</b>		
AURSCA101	Select and supply automotive parts and products	100
AURLTJ113	Remove, inspect and refit light vehicle wheel and tyre assemblies	20
AURTTF101	Inspect and service petrol fuel systems	25
AURTTJ011	Balance wheels and tyres	10
AURTTX002	Inspect and service manual transmissions	10
AURLTJ102	Remove, inspect, repair and refit light vehicle tyres and tubes	40
AURAF103	Communicate effectively in an automotive workplace	20
Course requires 13 core and 7 elective units, other elective units may be offered across different campuses. APPROX. TOTAL HOURS 420 depending on units		

**INCIDENTALS:** Students must have the following Personal Protective Equipment [that students must organise themselves approx. \$100] including: **Long sleeve hi-vis shirt > Long pants > Steel capped boots > Clear safety glasses.**

**SELECTION CRITERIA:** Students must meet VET for Secondary Schools Eligibility Criteria.

**DELIVERY LOCATION:** Barossa, Berri, Elizabeth, Kadina, Mount Barker, Mount Gambier, Murray Bridge, Noarlunga, Port Augusta, Port Lincoln, Port Pirie, Roxby Downs, Western Technical College and Whyalla. Delivery at school sites can be negotiated with TAFE SA, post site inspection.

**CONTACT:** schools@tafesa.edu.au



# ENGINEERING

## CERTIFICATE II IN ENGINEERING PATHWAYS [MEM20413]

This qualification delivers broad-based underpinning skills and knowledge in a range of engineering and manufacturing tasks which will enhance the graduates' entry-level employment prospects for apprenticeships, traineeships or general employment in an engineering-related workplace.

**COURSE TYPE:** Flexible Industry Pathway, suitable for Year 11 students.

**COURSE DELIVERY:** 1 day per week over 37 weeks. Additional homework is required to manage the online components to complete the qualification [approx. 104 hours].

**DAY, TIME & DATES:** One day a week from 9.00am-3.30pm. Day and times vary from location to location.

**NOTE:** This qualification is in transition. Where students are required to transition, TAFE SA will communicate with and counsel all students.

**COMPETENCIES DELIVERED:** Competencies and scheduled class time may differ from campus to campus.

NATIONAL CODE	UNIT NAME	NOMINAL HOURS
	<b>CORE</b>	
MEM13014A	Apply principles of occupational health and safety in the work environment	10
MEMPE005A	Develop a career plan for the engineering and manufacturing industry	20
MEMPE006A	Undertake a basic engineering project	80
MSAENV272B	Participate in environmentally sustainable work practices	30
	<b>ELECTIVE</b>	
MEM16008A	[A] Interact with computing technology	20
MEM18001C	[A] Use hand tools	20
MEM18002B	[A] Use power tools/hand held operations	20
MEMPE001A	[A] Use engineering workshop machines	60
MEMPE002A	[A] Use electric welding machines	40
MEMPE003A	[A] Use oxy-acetylene and soldering equipment	40
MEMPE004A	[A] Use fabrication equipment	40
MEMPE007A	[A] Pull apart and re-assemble engineering mechanisms	30
MSAPMSUP106A	[B] Work in a team	30

Course requires 4 core and 8 elective units. One elective must be chosen from Elective Group B, other units by negotiation.

APPROX. TOTAL HOURS 360-420 depending on units

**SACE CREDITS:** Students can gain between 50- 60 Stage 1 SACE Credits on completion of this qualification, dependent on units chosen.

**COURSE FEES:** Subsidised co-payment \$216-\$252.

**TRAINING FORMAT:** Classroom and simulated work environment onsite.

**INCIDENTALS:** Students must have the following Personal Protective Equipment [that students must organise themselves approx. \$100] including: **Long sleeve hi-vis shirt; Long pants; Steel capped boots; Clear safety glasses; Riggers gloves** [approx. \$5-\$10]; **Welding gloves** [approx. \$8- \$25]; **Welding Helmet [PAPR]**. A powered air purifying respirator [PAPR] is required as TAFE SA regard these as the primary risk control for protection from welding fumes. The helmet must have a minimum shade 10 lens. Schools can purchase these or enquire to TAFE SA as to whether the campus will have PAPR's available to borrow. When training is conducted at locations other than a TAFE SA campus, additional costs may apply. For further information contact TAFE SA on 1800 882 661.

**SELECTION CRITERIA:** Students must meet VET for Secondary Schools Eligibility Criteria.

**DELIVERY LOCATION:** Barossa, Berri, Elizabeth, Mount Gambier, Murray Bridge, Port Pirie, Western Technical College, Whyalla and onsite by negotiation.

**CONTACT:** schools@tafesa.edu.au



## CERTIFICATE II IN RESOURCES INFRASTRUCTURE WORK PREPARATION [RII20120]

This qualification reflects the roles of individuals who perform mainly routine tasks and procedures, using limited practical skills and fundamental operational knowledge, and taking some responsibility for the quality of the work outcomes.

This Certificate II in Resources and Infrastructure Work Preparation is a pathway qualification and will prepare an individual to successfully undertake a sector specified Certificate III from the Resources and Infrastructure Industry.

**DELIVERY:** 1 day per week over 36 weeks. Additional homework is required to manage the online components to complete the qualification [approx. 1 hour per unit].

**DAY, TIME & DATES:** One day a week from 9.00am-3.00pm. Day and times vary from location to location.

**COMPETENCIES DELIVERED:** Competencies and scheduled class time may differ from campus to campus.

NATIONAL CODE	UNIT NAME	NOMINAL HOURS
	CORE	
RIICOM201E	Communicate in the workplace	20
RIIENV201E	Identify and assess environmental and heritage concerns	20
RIIRIS201E	Conduct local risk control	20
RIIWHS201E	Work safely and follow WHS policies and procedures	20
	ELECTIVES – GROUP A	
RIISAM202E	Isolate and access plant	30
RIISAM203E	Use hand and power tools	80
RIICCM201E	Carry out measurements and calculations	20
	ELECTIVES – GROUP B	
RIIBEF201E	Plan and organise work	20
RIIGOV201E	Comply with site work processes/procedures	20
RIIWHS202E	Enter and work in confined spaces	30
RIIWHS204E	Work safely at heights	20
APPROX. TOTAL HOURS: 300		

### PACKAGING RULES:

Total number of units = 9

**4 core units** plus **5 elective units** of which:

- > at least three [3] must be chosen from Group A
- > no more than two [2] may be chosen from Group B
- > no more than one [1] unit may be chosen from elsewhere within this training package, or from another endorsed training package, or from an accredited course.

Elective units must be relevant to the work environment and the qualification, maintain the overall integrity of the AQF alignment and contribute to a valid vocational outcome.

There is one prerequisite in the imported units listed in this qualification. Where a unit is imported as an elective care must be taken to ensure that all prerequisites specified are complied with.

**SACE CREDITS:** Students can gain up to 35 Stage 1 SACE Credits on completion of this qualification, dependent on units chosen.

**COURSE FEES:** Subsidised co-payment \$150 to \$180

**TRAINING FORMAT:** Classroom and simulated work environment onsite.

**INCIDENTALS:** Students must have the following Personal Protective Equipment [that students must organise themselves approx. \$100] including: steel caps boots, hi-vis vest, long trousers.

**SELECTION CRITERIA:** Students must meet VET for Secondary Schools Eligibility Criteria.

**DELIVERY LOCATION:** Barossa, Berri, Elizabeth, Mount Gambier, Murray Bridge, Port Pirie, Regency, Whyalla and onsite by negotiation.

**CONTACT:** schools@tafesa.edu.au

# PRIMARY INDUSTRIES & SCIENCE

Work with animals and plants, on the land or in the lab. TAFE SA primary industries and science courses can lead to careers in animal or veterinary care, laboratory technology or conservation and natural resource management.

## AGRICULTURE

STACKABLE VET DESIGNED FOR YEAR 12 STUDENTS	<b>INTRODUCTION TO ANIMAL HUSBANDRY [LIVESTOCK]</b>	
	Students will gain skills in handling and caring for the health and welfare of livestock	
	<b>COST:</b> \$455.00 pp <b>DURATION:</b> 6 days [block delivery] <b>NOMINAL HOURS:</b> 70	<b>CONDITIONS:</b> Block delivery [6 days x 6 hours]. Students need steel-capped work boots, hat, sunglasses, long pants, long shirt - student to supply. Abide by TAFE SA bio security processes [scrub in, scrub out, fill out paperwork] to avoid cross contamination. <b>CONTENT:</b> AHCLSK205 Handle livestock using basic techniques AHCLSK202 Care for health and welfare of livestock <b>DELIVERY LOCATION:</b> Mount Gambier TAFE SA campus <b>SACE CREDITS:</b> Attracts 10 Stage 1 SACE Credits
	<b>ADVANCED CHEMICALS</b>	
	Students will gain skills in preparing and applying chemicals to control pest, weeds and diseases.	
	<b>COST:</b> \$910.00 pp <b>DURATION:</b> 8 days [clustered delivery] + 6 hours homework & 6 hours virtual classroom <b>NOMINAL HOURS:</b> 140	<b>CONTENT:</b> AHCCHM307 Prepare and apply chemicals to control pest, weeds and diseases. AHCPMG301 Control weeds <b>DELIVERY LOCATIONS:</b> Barossa, Urrbrae, Mount Gambier TAFE SA campuses. <b>SACE CREDITS:</b> Attracts 20 Stage 2 SACE Credits





## CERTIFICATE II IN AGRICULTURE [AHC20116]

Develop the skills needed to gain an entry level role in agriculture or go on to further study in the field. You will learn key skills in a number of agricultural industries, including livestock production and/or cropping. Students are able to pathway to the Certificate III in Agriculture, which has higher level of livestock health and welfare.

**COURSE TYPE:** Flexible Industry Pathway, suitable for Year 11 students.

**COURSE DELIVERY:** 1 day per week over 18-24 months (51 weeks – 76 weeks), depending on units undertaken.

**DAY, TIME & DATES:** Part-time day: various locations, day and times vary [rolling intake students must be enrolled at least 1 week prior to commencement of unit to be undertaken].

**RECOMMENDATION:** It is recommended that students do not have a full study band at school if they wish to also study at TAFE SA.

### COMPETENCIES DELIVERED:

18 units required to qualify for certificate. Not all units listed below are offered in the part-time group during normal school hours.

Students may need to attend other classes to meet all the competencies.

**NOTE:** Competencies and scheduled class time may differ from campus to campus.

NATIONAL CODE	UNIT NAME	NOMINAL HOURS
<b>CORE</b>		
AHCWHS201	Participate in work health and safety processes	20
AHCWRK209	Participate in environmentally sustainable work practices	20
AHCWRK204	Work effectively in the industry	20
<b>ELECTIVE</b>		
AHCCHM201	Apply chemicals under supervision	30
AHCINF202	Install, maintain and repair farm fencing	40
AHCLSK204	Carry out regular livestock observation	40
AHCLSK205	Handle livestock using basic techniques	30
AHCLSK206	Identify and mark livestock	20
AHCLSK209	Monitor water supplies	20
AHCLSK210	Muster and move livestock	25
AHCLSK211	Provide feed for livestock	30
AHCLSK308	Identify and draft livestock	40
AHCMOM203	Operate basic machinery and equipment	20
AHCMOM213	Operate and maintain chainsaws	40
AHCMOM217	Operate Quad Bikes	60
AHCPMG201	Treat Weeds	40
AHCWRK201	Observe and report on weather	25
AHCLSK202	Care for health and welfare of livestock	40
Course requires 3 core and 15 electives units to complete qualification, other units by negotiation. APPROX. TOTAL HOURS 560-625 depending on units		

**SACE CREDITS:** Students can gain between 80-85 Stage 1 SACE Credits on completion of this qualification, dependant on units chosen.

**COURSE FEES:** Subsidised co-payment \$336-\$375.

**TRAINING FORMAT:** Classroom and access to a working farm with appropriate facilities to complete the practical requirements for each competency.

**INCIDENTALS:** This course has an incidentals fee of \$45 which covers the following: **Ear muffs; Riggers gloves; Spray suit; Nitrile gloves; Safety glasses.** Students must have the following Personal Protective Equipment [that students must organise themselves approx. \$60- \$100] including: **Long pants; Steel capped boots; Sun protection [hat]; Long sleeve shirt.**

**SELECTION CRITERIA:** Students must meet VET for Secondary Schools Eligibility Criteria.

**DELIVERY LOCATION:** Berri, Mount Gambier, Port Lincoln, onsite and other locations by negotiation.

**CONTACT:** schools@tafesa.edu.au

PRIMARY INDUSTRIES & SCIENCE



Grow your career  
on the land.

## CERTIFICATE III IN AGRICULTURE [AHC30116]

Gain essential knowledge and skills to work in the agriculture industry, from livestock breeding and animal health and nutrition, to establishing pastures and crop harvesting. You'll also learn how to operate and maintain machinery and develop skills in building stock fences and more.

Job roles within the agriculture sector range from farmhands, farm business managers and numerous agricultural service roles. The Certificate III also serves as a pathway for further learning.

**COURSE TYPE:** Flexible Industry Pathway, suitable for Year 11 students.

**COURSE DELIVERY:** 1 day per week over 18-24 months, (51 weeks – 76 weeks) depending on units undertaken.

**CONTACT:** [theory]: 170 hours / [practical]: 350 hours

**Directed study/in workplace:** 300 hours.

**DAY, TIME & DATES:** Part-time day: various locations, day and times vary [rolling intake students must be enrolled at least 1 week prior to commencement of unit to be undertaken].

**RECOMMENDATION:** It is recommended that students do not have a full study band at school if they wish to also study at TAFE SA.

### COMPETENCIES DELIVERED:

16 units required to qualify for certificate. Not all units listed below are offered in the part-time group during normal school hours.

Students may need to attend other classes to meet all the competencies.

**NOTE:** Competencies and scheduled class time may differ from campus to campus.

NATIONAL CODE	UNIT NAME	NOMINAL HOURS
<b>CORE</b>		
AHCWHS301	Contribute to work health and safety processes	50
AHCWRK309	Apply environmentally sustainable work practices	50
<b>ELECTIVE</b>		
AHCLSK309	Implement animal health control programs	50
AHCLSK301	Administer medication to livestock	80
AHCLSK308	Identify and draft livestock	40
AHCLSK202	Care for health and welfare of livestock	40
AHCINF303	Plan and construct conventional fencing	60
AHCINF302	Plan and construct an electric fence	60
AHCCHM307	Prepare and apply chemicals to control pest, weeds and diseases	70
AHCCHM304	Transport and store chemicals	50
AHCWRK204	Work effectively in the industry	20
AHCLSK204	Carry out regular livestock observation	40
AHCMOM217	Operate Quad bikes	60
AHCLSK209	Monitor Water Supplies	20
AHCLSK206	Identify and mark livestock	20
AHCLSK211	Provide feed for livestock	30
Course requires 2 core and 14 electives units to complete qualification, other units by negotiation.		
APPROX. TOTAL HOURS 740-840 depending on units		

**SACE CREDITS:** Students can gain between 105-120 Stage 2 SACE Credits on completion of this qualification, dependent on units chosen.

**COURSE FEES:** Subsidised co-payment \$1998-\$2268.

**TRAINING FORMAT:** Classroom and access to a working farm with appropriate facilities to complete the practical requirements for each competency.

**INCIDENTALS:** This course has an incidentals fee of \$45 which covers the following: **Ear muffs; Riggers gloves; Spray suit; Nitrile gloves; Safety glasses.** Students must have the following Personal Protective Equipment [that students must organise themselves approx. \$60- \$100] including: **Long pants; Steel capped boots; Sun protection [hat]; Long sleeve shirt.**

**SELECTION CRITERIA:** Students must meet VET for Secondary Schools Eligibility Criteria.

**DELIVERY LOCATION:** Mount Gambier, Mount Compass, Port Lincoln, enquiries from other locations welcome.

**CONTACT:** schools@tafesa.edu.au

# PRIMARY INDUSTRIES & SCIENCE

## ANIMAL CARE

STACKABLE VET DESIGNED FOR YEAR 12 STUDENTS

### ADVANCED ANIMAL CARE 1

This course assists students in developing the skills and knowledge required to identify behaviours and interact safely with animals, undertake basic animal first aid and promote positive wellbeing in animal care workplaces. Students will work with multiple animal species.

Certificate II in Animal Care is a preferred pre-requisite for this course.

**COST:** \$560

**DURATION:** 12 days

**NOMINAL HOURS:** 140

**CONTENT:** **ACMBEH301** Identify behaviours and interact safely with animals  
**ACMGEN304** Promote positive wellbeing in self and others in animal care workplaces  
**ACMGEN309** Provide basic animal first aid

**DELIVERY LOCATION:** TAFE SA Gilles Plains campus

**SACE CREDITS:** Attracts 20 Stage 2 SACE Credits

### ADVANCED ANIMAL CARE 2

This course assists students in developing the skills and knowledge required to communicate effectively in an animal care workplace, understand and comply with infection control policies and procedures and contribute to work health and safety in an animal care workplace. Students will work with multiple animal species.

Certificate II in Animal Care is a preferred pre-requisite for this course.

**COST:** \$560

**DURATION:** 12 days

**NOMINAL HOURS:** 140

**CONTENT:** **ACMGEN315** Communicate effectively with clients and team members  
**ACMINF301** Comply with infection control policies and procedures in animal care work  
**ACMWHS301** Contribute to workplace health and safety processes

**DELIVERY LOCATION:** TAFE SA Gilles Plains campus

**SACE CREDITS:** Attracts 20 Stage 2 SACE Credits



## CERTIFICATE II IN ANIMAL CARE [ACM20121]

This is a practical-based, industry-valued qualification for students wanting an entry level pathway into the animal care industry. Students will gain experience in handling multiple species of animals and undertaking various animal husbandry tasks, in a practical animal care environment.

This qualification is also the pre-requisite to the Certificate IV in Veterinary Nursing.

**COURSE DELIVERY:** 1 day per week over a 13 weeks plus 78 hours compulsory online delivery over 14 weeks. 2 intakes per year [Semester 1 and Semester 2].

### COMPETENCIES DELIVERED:

NATIONAL CODE	UNIT NAME	NOMINAL HOURS
	<b>CORE</b>	
ACMGEN201	Work in the animal care industry	30
ACMGEN202	Complete animal care hygiene routines	30
ACMGEN203	Feed and water animals	40
ACMGEN204	Assist in health care of animals	40
ACMSUS201	Participate in environmentally sustainable work practices	20
ACMWHS201	Participate in workplace health and safety processes	40
BSBCMM211	Apply communication skills	40
	<b>ELECTIVE</b>	
ACMBEH302	Provide enrichment for animals	40
ACMGEN205	Source and provide information for animal care needs	40
ACMGEN309	Provide basic animal first aid	40
ACMGEN101	Explore job opportunities in animal care and related industries	10
ACMGEN310	Provide reception services for an animal care facility	30
APPROX. TOTAL HOURS 400		

Students are required to successfully complete 7 core and 5 elective units to be awarded this qualification. There are approximately 400 nominal hours in this qualification.

**COURSE TYPE:** Flexible Industry Pathway suitable for Year 11 students.

**SACE CREDITS:** Students can gain up to 55 Stage 1 SACE Credits on completion of this qualification, dependent on units chosen.

**COURSE FEES:** Subsidised under VFSS approx. \$240. Fees are payable at the beginning of each semester.

**INCIDENTALS:** There is an incidental fee of \$35 that includes a scrub top and PPE.

**TRAINING FORMAT:** Blended: Online with virtual classrooms and on-campus practical workshops.

**SELECTION CRITERIA:** Apply via the VET referral form and complete the VETRO process.

**DELIVERY LOCATION:** TAFE SA Gilles Plains.

**CONTACT:** schools@tafesa.edu.au



# PRIMARY INDUSTRIES & SCIENCE

## AQUACULTURE

### CERTIFICATE II IN AQUACULTURE [SFI20119]

Develop the skills and knowledge to work in the Aquaculture and Seafood industry. With a focus on hands-on, practical learning in a real Aquaculture facility, you will develop skills in feeding, handling and growing stock, disease management, harvesting, filleting and food hygiene, operating and maintaining aquaculture systems, as well as safe work practices, teamwork and effectively communicating in the seafood industry. The Certificate II in Aquaculture [SFI20119] has a strong focus on developing basic aquaculture knowledge and skills whilst providing additional training in elements of shipboard safety.

**COURSE TYPE:** Flexible Industry Pathway suitable for Year 11 students.

**COURSE DELIVERY:** 12 months delivery. Blended methodology with online facilitated delivery and timetabled intensive blocks (4 blocks of 5 days) for skills acquisition and assessments.

#### COMPETENCIES DELIVERED:

NATIONAL CODE	UNIT NAME	NOMINAL HOURS
	<b>CORE</b>	
SFIAQU202	Handle stock	15
SFIBIO201	Inspect and clean aquatic work equipment	30
SFIWHS201	Meet workplace health and safety requirements	30
SFIXSI102	Communicate in the seafood industry	30
SFIXSI201	Work effectively in the seafood industry	30
	<b>ELECTIVE</b>	
SFIAQU210	Harvest cultured or held stock	15
SFIAQU217	Feed stock	20
SFIXSI101	Apply basic food handling and safety practices	20
MARF027	Apply basic survival skills in the event of vessel abandonment	35
MARF028	Follow procedures to minimise and fight fires on board a vessel	30
MARF029	Meet work health and safety requirements	30
MARF030	Survive at sea using survival craft	15

Course requires 5 core and 7 electives units to complete qualification, other units by negotiation.

APPROX. TOTAL HOURS: 300 depending on units

**SACE CREDITS:** Students can gain between 40- 45 Stage 1 SACE Credits on completion of this qualification, dependent on units chosen.

**COURSE FEES:** Subsidised co-payment \$174-\$189.

**TRAINING FORMAT:** Classroom/ simulated work environment onsite.

**INCIDENTALS:** Desirable for students to purchase full Personal Protective Equipment [that students must organise themselves approx. \$100] including: **Enclosed shoes and gum boots.**

**SELECTION CRITERIA:** Students must meet VET for Secondary Schools Eligibility Criteria.

**DELIVERY LOCATION:** Port Lincoln, Ceduna, Cowell, Kangaroo Island.

**CONTACT:** schools@tafesa.edu.au

Students learn  
hands-on in a  
real aquaculture  
facility, learning  
to handle, feed  
and grow stock.

# HORTICULTURE

STACKABLE VET DESIGNED FOR  
YEAR 10 AND YEAR 11 STUDENTS

## INTRODUCTION TO HORTICULTURE – PLANT HUSBANDRY

This course equips students with skills in treating weeds, plant pests, diseases and disorders.

**COST:** \$455.00 pp

**DURATION:** 6 days  
[Clustered Delivery]  
+ 6 hours homework

**NOMINAL HOURS:** 70

**CONTENT:** AHCPMG201 Treat weeds

AHCPMG202 Treat plant pests, diseases and disorders

**DELIVERY LOCATION:** Barossa, Urrbrae and Mount Gambier TAFE SA campus.  
Available at school sites by negotiation, must have a nursery.

**SACE CREDITS:** Attracts 10 Stage 1 SACE Credits

## INTRODUCTION TO HORTICULTURE – PLANT PROPAGATION

Students will gain skills in propagation and assisting with soil sampling and testing.

**COST:** \$520.00 pp

**DURATION:** 6 days  
+ 6 hours homework

**NOMINAL HOURS:** 80

**CONTENT:** AHCWHS201 Participate in work health and safety practices

AHCNSY207 Undertake propagation activities

AHCSOL203 Assist with soil or growing media sampling and testing

**DELIVERY LOCATION:** Barossa, Urrbrae and Mount Gambier TAFE SA campus.  
Available at school sites by negotiation, must have a nursery.

**SACE CREDITS:** Attracts 10 Stage 1 SACE Credits



Grow your  
future.

# PRIMARY INDUSTRIES & SCIENCE

## CERTIFICATE II IN HORTICULTURE [AHC20416]

Develop skills and knowledge to work as a horticulture worker or assistant.

You will learn about planting, recognising plants, maintaining irrigation systems, pruning, treating weeds, pests and diseases, basic soil properties, renovating grassed areas, tending to nursery plants, laying paving, machinery and equipment operation and maintenance.

**COURSE TYPE:** Flexible Industry Pathway, suitable for Year 11 students.

**COURSE DELIVERY:** 1 day per week over 34 weeks, depending on units undertaken.

**DAY, TIME & DATES:** Part-time Friday 9.00am-3.30pm [rolling intake students must be enrolled at least 1 week prior to commencement of unit to be undertaken].

**RECOMMENDATION:** It is recommended that students do not have a full study band at school if they wish to also study at TAFE SA.

### COMPETENCIES DELIVERED:

Not all units listed below are offered in the part-time group during normal school hours. Students will need to attend evening classes to meet all the competencies.

**NOTE:** Competencies and schedule class time may differ from campus to campus. This qualification is in transition. Where students are required to transition, TAFE SA will communicate with and counsel all students.

NATIONAL CODE	UNIT NAME	NOMINAL HOURS
	<b>CORE</b>	
AHCWHS201	Participate in work health and safety processes	20
AHCPCM201	Recognise plants	40
AHCPMG201	Treat weeds	40
AHCPMG202	Treat plant pests, diseases and disorders	30
AHCSOL202	Assist with soil or growing media sampling and testing	30
	<b>ELECTIVE</b>	
AHCMOM203	Operate basic machinery and equipment	20
AHCPCM202	Collect, prepare and preserve plant specimens	30
AHCWRK209	Participate in environmentally sustainable work practices	20
AHCNSY202	Care for nursery plants	30
AHCNSY203	Undertake propagation techniques	30
AHCPGD201	Plant trees and shrubs	20
AHCIRG217	Assist with pressurised irrigation operations	40
AHCCHM201	Apply chemicals under supervision	30
AHCPGD203	Prune shrubs and small trees	35
AHCNSY201	Pot up plants	20

**Course requires 5 core and 10 electives units to complete qualification. APPROX. TOTAL HOURS 435-515 depending on units**

**SACE CREDITS:** Students can gain between 60-70 Stage 1 SACE Credits on completion of this qualification, dependent on units chosen.

**COURSE FEES:** Subsidised co-payment \$261-\$309.

**TRAINING FORMAT:** Classroom/simulated work environment on site.

**INCIDENTALS:** This course has an incidentals fee of \$45 which covers the following: **Ear muffs; Riggers gloves; Spray suit; Nitrile gloves; Safety glasses.** Students must have the following Personal Protective Equipment [that students must organise themselves approx. \$60-100] including: **Long pants; Steel capped boots; Sun protection [hat]; Long sleeve shirt.**

**SELECTION CRITERIA:** Students must meet VET for Secondary Schools Eligibility Criteria.

**DELIVERY LOCATION:** Barossa Valley, Mount Gambier, Urrbrae.

**CONTACT:** schools@tafesa.edu.au



# RURAL OPERATIONS

## CERTIFICATE III IN RURAL OPERATIONS [AHC32816]

Grow your career in the pastoral sector with in-depth knowledge in agriculture and animal care. Gain practical skills to operate machinery and equipment, maintain facilities and general agriculture activities, as well as the vital skills involved in animal care.

The qualification allows students to select a livestock production, cropping or livestock context as a job focus or, in the case of mixed farming enterprises, both cropping and livestock.

**COURSE TYPE:** Flexible Industry Pathway, suitable for Year 11 students.

**COURSE DELIVERY:** 1 day per week over 18-24 months, (51 weeks – 76 weeks) depending on units undertaken.

**CONTACT:** 170 hours [theory]/350 hours [practical].

**DIRECTED STUDY/IN WORKPLACE:** 300 hours.

**DAY, TIME & DATES:** Part-time day: various locations, day and times vary, [rolling intake students must be enrolled at least 1 week prior to commencement of unit to be undertaken].

**RECOMMENDATION:** It is recommended that students do not have a full study band at school if they wish to also study at TAFE SA.

### COMPETENCIES DELIVERED:

NATIONAL CODE	UNIT NAME	NOMINAL HOURS
	<b>CORE</b>	
AHCWHS301	Contribute to work health and safety processes	50
AHCWRK309	Apply environmentally sustainable work practices	50
	<b>ELECTIVE</b>	
AHCLSK301	Administer medication to livestock	80
AHCLSK308	Identify and draft livestock	40
AHCLSK309	Implement animal health control programs	50
AHCINF303	Plan and construct conventional fencing	60
AHCINF302	Plan and construct an electric fence	60
AHCCHM307	Prepare and apply chemicals to control pest, weeds and diseases	70
AHCCHM304	Transport and store chemicals	50
AHCWRK204	Work effectively in the industry	20
AHCMOM202	Operate Tractors	40
AHCMOM217	Operate Quad bikes	60
AHCLSK305	Maintain livestock water supplies	30
AHCLSK211	Provide feed for livestock	30
AHCLSK205	Handle livestock using basic techniques	30
AHCPMG301	Control weeds	70

Course requires 2 core and 14 electives units to complete qualification.  
APPROX. TOTAL HOURS 695-960 depending on units

**NOTE:** This qualification is in transition. Where students are required to transition, TAFE SA will communicate with and counsel all students.

**SACE CREDITS:** Students can gain between 95-135 Stage 2 SACE Credits on completion of this qualification, dependent on units chosen.

**COURSE FEES:** Subsidised co-payment \$1876.50-\$2,592.

**TRAINING FORMAT:** Classroom/simulated work environment onsite.

**INCIDENTALS:** This course has an incidentals fee of \$45 which covers the following: **Ear muffs; Riggers glove; Spray suit; Nitrile gloves; Safety glasses.** Students must have the following Personal Protective Equipment [that students must organise themselves approx. \$60-100] including: **Long pants; Steel capped boots; Sun protection [hat]; Long sleeve shirt.**

**SELECTION CRITERIA:** Students must meet VET for Secondary Schools Eligibility Criteria.

**DELIVERY LOCATION:** Naracoorte, Mount Gambier, Berri, Port Lincoln, enquiries from other locations welcome.

**CONTACT:** schools@tafesa.edu.au

# FURTHER INFORMATION

## TERMS AND CONDITIONS

- > Applications must be submitted via a VET referral form [available through your School VET coordinator].
- > For Flexible Industry Pathway courses, applicants must be:
  - An Australian citizen or,
  - A permanent Australian resident or,
  - An eligible visa holderAnd you must be:
  - Enrolled in Year 11, 12 or 13 and are 16 years of age or turning 16 years of age in the year of enrolment, and are undertaking SACE or equivalent and,
  - Have relevant industry exposure, accredited training, or SACE curriculum-based project work
- > For Stackable VET courses, applicants must be Year 10, 11 or 12.
- > Minimum and maximum numbers for each course apply
- > All applicants for Flexible Industry Pathways courses must undertake the VET Readiness Orientation including an upfront assessment of needs.

## DELIVERY AND ASSESSMENT

- > Delivery and assessment methodologies differ for each course.
- > Generally, delivery and assessment will involve a combination of attendance, practical and theoretical activities, and home assignments.

Further information about specific course delivery and assessment can be obtained from the program contacts listed.

## COURSE OUTCOMES AND PATHWAYS

General information about course outcome and pathways is included on the relevant courses page. Further details can be obtained from the program contact listed.

## RESULTS

- > Students will be informed of results.
- > Students' results will be issued to the school through the VET coordinator at the designated resulting times.

## FEES AND PAYMENT

- > Fees for each course are listed.
- > Invoices for the full fee amount will be issued to the student's school and sent to the school VET coordinator.
- > For Flexible Industry Pathway qualifications there is no refund after week 4 of the course.
- > For VET Stackables there is no refund after the commencement of the course.
- > An invoice will not be generated until minimum numbers for the course are confirmed.
- > For information on refunds and the criteria under which refunds can be granted, please see TAFE SA's refund policy available at [tafesa.edu.au/apply-enrol/fees-payments/withdrawals-refunds](https://tafesa.edu.au/apply-enrol/fees-payments/withdrawals-refunds)

## DUTY OF CARE

- > Students who participate in any of these courses remain under the duty of care of the school.

Where possible, the program contact will liaise with the school regarding absentee students.

For any other specific queries or concerns, liaise with the program contact listed on the relevant course page.

## STUDENTS RIGHTS AND RESPONSIBILITIES

- > Students and staff at TAFE SA have a right to work and study in an environment free from harassment, discrimination or threatening behaviour.
- > Students that enrol at TAFE SA must agree to accept and abide by the policies and procedures, follow the rules and regulations and participate in studies as directed by the program area.

Further details about student rights and responsibilities are available on the TAFE SA website including:

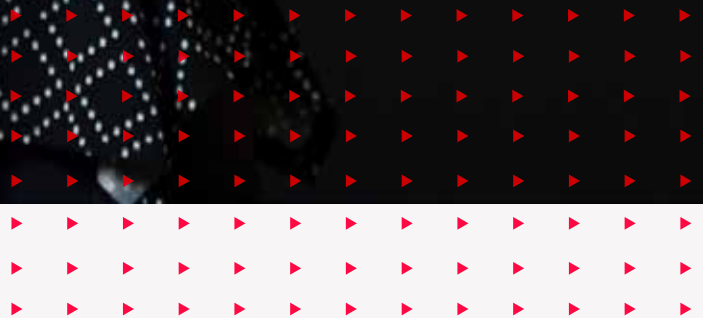
- |                           |                             |
|---------------------------|-----------------------------|
| > access and equity       | > participation             |
| > child protection        | > plagiarism and cheating   |
| > complaints              | > racism                    |
| > copyright               | > sexual harassment         |
| > discrimination          | > student code of behaviour |
| > harassment              | > student records and       |
| > health and safety       | > vehicle regulations.      |
| > internet user agreement |                             |

## SACE CREDITS

TAFE SA is not responsible for SACE credits. The SACE Board recognises and grants SACE credits for appropriate qualifications, subjects, courses, or learning experiences gained by local, interstate, or overseas students. The SACE Board has recognition arrangements for students undertaking vocational education and training (VET) qualifications or units of competency from VET qualifications. The SACE Board will calculate any credits for the student in accordance with the Recognition Arrangements for Vocational Education and Training (VET) in the SACE policy.

The SACE Credits listed in this guide are subject to change. For the most current information on VET in SACE please visit [sace.sa.edu.au/web/vet/what-is-vet/vet-in-sace](http://sace.sa.edu.au/web/vet/what-is-vet/vet-in-sace)

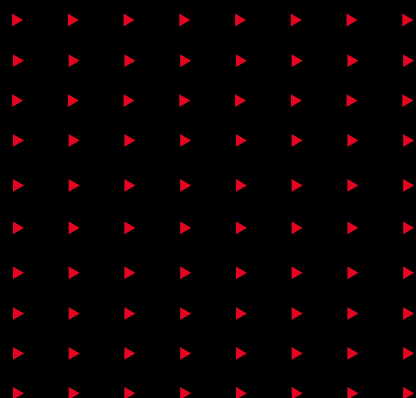








**TAFE SA STUDENTS  
LEARN JOB-READY  
SKILLS FROM  
INDUSTRY TRAINED,  
PASSIONATE  
LECTURERS.  
GRADUATES ARE IN  
DEMAND AND WELL  
PREPARED TO START  
WORKING IN THEIR  
CHOSEN FIELDS.**



**ARTS & DESIGN** ■  
**BUILDING & CONSTRUCTION** ■  
**BUSINESS & IT** ■  
**COMMUNITY SERVICES** ■  
**HAIR & BEAUTY** ■  
**HEALTH & LIFESTYLE** ■  
**HOSPITALITY & TOURISM** ■  
**MINING, ENGINEERING & AUTOMOTIVE** ■  
**PRIMARY INDUSTRIES & SCIENCE** ■

Accurate as at May 2023.  
Courses listed in this guide are subject to change.  
Please refer to the TAFE SA website for up-to-date course  
information, including delivery modes, locations and fees.

**tafeSA**



Government of  
South Australia

**tafesa.edu.au**

**1800 882 661**

If you are a person who is Deaf, hard of hearing  
or have a speech impairment, contact us through  
the National Relay Service [relayservice.gov.au](https://relayservice.gov.au)