

2025 VET FOR SCHOOL STUDENTS

tafeSA



Government of
South Australia



TAFESA.EDU.AU



ACKNOWLEDGEMENT OF COUNTRY

TAFE SA acknowledges the traditional owners of the land. It is a privilege to be sharing this land on which we live, work and learn.

We recognise that this land has always been a place of teaching, learning and knowledge sharing. We acknowledge the deep and enduring spiritual connection the First Nation's people have to this land and their ongoing contributions to education.

TAFE SA recognises that Aboriginal and Torres Strait Islanders have maintained their culture, heritage, beliefs, languages, and lores and these are of ongoing importance.

We commit ourselves to learning from the wisdom and knowledge of the Traditional Owners and to fostering a spirit of respect, inclusivity, and reconciliation within our community.

CONTENTS

WHY TAFE SA? 2

ARTS & DESIGN 4

FASHION 4

SCREEN & MEDIA 5

BUILDING & CONSTRUCTION 8

CONSTRUCTION 8

ELECTROTECHNOLOGY 12

PLUMBING 14

BUSINESS 16

RETAIL 16

COMMUNITY SERVICES 18

EARLY CHILDHOOD EDUCATION 18

INDIVIDUAL SUPPORT 20

HAIR & BEAUTY 24

BEAUTY 24

HAIRDRESSING 26

HEALTH & LIFESTYLE 28

ALLIED HEALTH 28

SPORTS & RECREATION 31

HOSPITALITY & TOURISM 32

TOURISM 32

BAKING 33

HOSPITALITY 36

COOKERY 38

IT 40

MINING, ENGINEERING & AUTOMOTIVE 42

AUTOMOTIVE 42

ENGINEERING 44

PRIMARY INDUSTRIES & SCIENCE 48

AGRICULTURE 48

ANIMAL CARE 52

AQUACULTURE 54

HORTICULTURE 55

RURAL OPERATIONS 58

FURTHER INFORMATION 60

WHY TAFE SA?

TAFE SA's courses for school students are designed for students in Year 10 to Year 12. They provide the opportunity to learn specific industry skills and gain credit towards a nationally recognised qualification such as a certificate, diploma or advanced diploma, all while students undertake their South Australian Certificate of Education (SACE).

WHY TAFE SA?

Our courses are designed in partnership with industry to give students the practical, hands-on skills and experience that employers value. Students gain access to our state-of-the-art facilities and learn from industry experts, ensuring they graduate with a competitive edge.

HOW DO I SIGN UP?

To apply for any of the courses you see in this guide, speak to your school's career counsellor or VET coordinator.

For any questions please contact your VET coordinator or call us on 1800 882 661.

WHAT ARE THE OPTIONS?

TAFE SA has a large range of courses available for school students in 2025. There are three different ways to study with us. You can choose either: a Flexible Industry Pathways program, Stackable VET, or school-based apprenticeship or traineeship.

TOP REASONS TO CHOOSE TAFE SA FOR SCHOOL STUDENTS IN 2025

1. FLEXIBLE INDUSTRY PATHWAYS PROGRAM

The South Australian Government's Flexible Industry Pathways program is available for students turning 16 years or older and enrolled in Year 11 or Year 12 in 2025. Students will study with TAFE SA while undertaking their SACE, and graduate with a nationally recognised qualification from Certificate II to Certificate III level, in one of South Australia's growth industries.

For students to be eligible for a Flexible Industry Pathways course, students are required to first complete the VET Readiness Orientation (VETRO). Refer to Page 56 regarding VETRO application process.

2. SPECIALISED COURSES FOR SECONDARY STUDENTS ('STACKABLE VET')

As well as the qualifications available through the state government's Flexible Industry Pathways program, TAFE SA has additional accredited courses especially for high school students. These courses are part of the South Australian Government's 'Stackable VET' program and provides students with highly valued vocational skills, prepares them for the workplace and allows them to try out different areas before committing to a qualification. 'Stackable VET' courses may also earn credit towards a student's SACE. 'Stackable VET' programs are available for Year 10, Year 11 and Year 12 students and are generally delivered one day per week unless specified otherwise.

3. SCHOOL BASED APPRENTICESHIPS AND TRAINEESHIPS

Secondary school students can begin an apprenticeship or traineeship in Years 10, 11 or 12, combining paid employment and structured work-related training as part of their SACE. This allows students to earn while they learn, and graduate with on-the job training and skills.

TAFE SA's school-based apprenticeships and traineeships courses are not listed in this guide. Instead, visit www.tafesa.edu.au/apply-enrol/secondary-school-courses/school-based-apprenticeships-and-traineeships for the list of school-based apprenticeship and traineeship courses currently available or, if the course you're interested in is not listed, please contact TAFE SA on 1800 882 661 as we may be able to design bespoke training to meet your needs.

AWARD WINNING

South Australian Training Awards – School-based Apprentice or Trainee of the Year 2023 & 2022

South Australian Training Awards – Industry Collaboration 2023

South Australian Training Awards – Large Training Provider of the Year 2022 & 2021

South Australian Training Awards – Apprentice of the Year 2022

South Australian Training Awards – Aboriginal and Torres Strait Islander Student of the Year 2022

South Australian Training Awards – 3 x finalists in the VET Teacher/Trainer of the Year 2022

Governor's Multicultural Awards – Finalist (Public Sector Category) 2022

Australian Training Awards – Australian School-based Apprentice or Trainee of the Year 2022

Australian Training Awards – Runner up Aboriginal and Torres Strait Islander Student of the Year 2022

Weld Australia Training and Education Award 2022

South Australian Training Awards – VET teacher/trainer of the Year 2021

South Australian Training Awards – Vocational Trainer of the Year 2020 & 2019

South Australian Training Awards – Trainee of the Year 2020

Wine Communicator Awards – Best Wine Educator 2020

ARTS & DESIGN

Don't ignore your restless creative energy – let it out and put it to work. TAFE SA's arts and design courses give you the skills, confidence, experience and industry networks to transform your creativity into a future where every day is an opportunity to create something new.

FASHION

INTRODUCTION TO FASHION DESIGN AND MAKING

STACKABLE VET
10 STAGE 1 SACE CREDITS

COST \$847

DURATION 10 DAYS.
1 DAY PER WEEK FOR 10 WEEKS.

NOMINAL HOURS 90

STUDY MODE FACE TO FACE LEARNING

DELIVERY LOCATION

TAFE SA CAMPUS: ADELAIDE CITY

COURSE DATES 1 DAY PER WEEK
(FOR 10 WEEKS)

TERM 1: 07/02/2025 - 11/04/2025

TERM 2: 02/05/2025 - 04/07/2025

TERM 3: 25/07/2025 - 26/09/2025

The fashion team at TAFE SA will introduce you to basic trade skills required to work in the fashion industry. Learn how to sew materials by machine, fix minor machine issues, and complete a small textile project.

CONTENT

MSMWHS200 WORK SAFELY

MSTAT2005 SEW MATERIALS BY MACHINE





SCREEN & MEDIA

Watch your ideas evolve and transform as they go from storyboard to TV, cinema, mobile and computer screens. Learn the fundamentals of media and get skills in the growing computer-generated imagery (CGI), visual effects (VFX) and game art disciplines.

ADVANCED SOUND TECHNICAL PRODUCTION

STACKABLE VET
20 STAGE 2 SAGE CREDITS

COST \$1650

DURATION 12 DAYS

NOMINAL HOURS 140

DELIVERY LOCATION TAFE SA CAMPUS:
ADELAIDE COLLEGE OF THE ARTS

This course will develop skills in sound and technical production with a key focus on live audio operations and the installation and disassembly of audio equipment.

CONTENT

- CUASOU308 INSTALL AND DISASSEMBLE AUDIO EQUIPMENT
- CUASOU321 UNDERTAKE LIVE AUDIO OPERATIONS

ADVANCED LIVE PRODUCTION OPERATIONS

STACKABLE VET
20 STAGE 2 SAGE CREDITS

COST \$1950

DURATION 18 DAYS

NOMINAL HOURS 190

DELIVERY LOCATION TAFE SA CAMPUS:
ADELAIDE COLLEGE OF THE ARTS

This course will develop skills in supporting live performances. Students will learn to work effectively backstage during performances as well as assisting with production operations.

CONTENT

- CUASTA311 ASSIST WITH PRODUCTION OPERATIONS FOR LIVE PERFORMANCES
- CUASMT311 WORK EFFECTIVELY BACKSTAGE DURING PERFORMANCES

ADVANCED ELECTRONIC MUSIC PRODUCTION

STACKABLE VET
20 STAGE 2 SAGE CREDITS

COST \$1650

DURATION 10 DAYS

NOMINAL HOURS 140

DELIVERY LOCATION TAFE SA CAMPUS:
ADELAIDE COLLEGE OF THE ARTS

This course will develop skills in electronic music productions. Students will focus on creating simple music compositions, prepare audio assets and gain an understanding of careers in the creative arts industry.

CONTENT

- CUASOU304 PREPARE AUDIO ASSETS
- CUAIND314 PLAN A CAREER IN THE CREATIVE ARTS INDUSTRY
- CUAMLT302 APPLY KNOWLEDGE OF STYLE AND GENRE TO MUSIC INDUSTRY PRACTICE
- CUAMCP311 CREATE SIMPLE MUSIC COMPOSITIONS

CERTIFICATE III IN SCREEN AND MEDIA

NATIONAL CODE CUA31020

Learn a range of skills and knowledge across design, 3D modelling, animation, video and digital imaging. Study online by video conference 1 day per week with the convenience of having a lecturer at hand to guide you through a range of experiences in this exciting field. Use this course to explore your media specialisation for further study. Study from your home or school in your region.

COURSE TYPE

Flexible Industry Pathway, suitable for students in Year 11 or Year 12.

COURSE DELIVERY

1 day per week over 35 weeks.
Delivered fully online.

DAY, TIME & DATES

Every Thursday during SA school terms, 9.00am-4.00pm. Offered once per year at the commencement of semester one.

SACE CREDITS

Students can gain between 65-75 Stage 2 SACE credits on completion of this qualification, dependent on units chosen.

REQUIREMENTS

It is recommended that students do not have a full study band at school if they also wish to study this course. This course contains some complexity in handling software and will require six hours homework per week, and six hours on each delivery day. Schools should consider acquiring the software listed in incidentals, along with individuals requiring a webcam, microphone, a computer with at least 8gb of RAM and stable internet access.

COURSE FEES

Subsidised co-payment \$1255-\$1282.

STUDY MODE

Online.

INCIDENTALS

Students will participate in the program from their school or equivalent where approved by their school. Students will require access to Adobe Creative Cloud and Autodesk Maya software and a WACOM (or equivalent) tablet. Homework is an additional six hours per week.

SELECTION CRITERIA

Students must meet Flexible Industry Pathways eligibility criteria.

DELIVERY LOCATION

Online delivery statewide.



TRANSFORM FROM STORYBOARD TO SCREEN.

COMPETENCIES DELIVERED

Competencies and scheduled class time may differ from campus to campus.

UNIT NAME	NATIONAL CODE	NOMINAL HOURS
Apply critical thinking skills in a team environment	BSBCRT311	40
Apply work health and safety practices	CUAWHS312	30
Work effectively in the creative arts industry	CUAIND311	50

ELECTIVES

Explore and apply the creative design process to 3D forms	CUADES303	60
Explore and apply the creative design process to 2D forms	CUADES302	60
Create 2D digital animations	CUAANM301	35
Prepare video assets	CUADIG311	30
Create visual design components	CUADIG304	30
Evaluate the nature of design in a specific industry context	CUADES202	30
Produce digital images	CUADIG315	50
Develop three-dimensional (3D) models for digital games	ICTGAM304	50

Course requires 3 core and 8 elective units, other units by negotiation.

APPROX. TOTAL HOURS: 465-475 DEPENDING ON UNITS

BUILDING & CONSTRUCTION

Start here for a career that can become whatever you want –
from a lifetime on the tools to years watching your own business grow.

CONSTRUCTION

INTRODUCTION TO CABINET MAKING

STACKABLE VET
20 STAGE 1 SACE CREDITS

COST \$1433.50

DURATION 12 DAYS

NOMINAL HOURS 144

DELIVERY LOCATION

TAFE SA CAMPUS: TONSLEY

Cabinet makers build, repair and install furniture or fixtures made from either wood or wood substitutes, including mass produced flat panels destined to become kitchen cupboards and other furniture items. This course teaches you the skills to join solid timber, operate basic static machines and make measurements and calculations.

CONTENT

MSFFM2013 USE FURNITURE MAKING HAND AND POWER TOOLS
MSFFM2016 JOIN SOLID TIMBER
MSFFM2017 HAND MAKE TIMBER JOINTS
MSFFM2018 OPERATE BASIC STATIC MACHINES SAFELY

WHITE CARD

STACKABLE VET
NO SACE CREDITS APPLICABLE

COST \$140 (COSTS MAY APPLY FOR DELIVERY IN REGIONAL OR REMOTE AREAS WHERE TRAVEL AND ACCOMMODATION MAY BE REQUIRED)

DURATION 1 DAY

NOMINAL HOURS 6

DELIVERY LOCATIONS TAFE SA CAMPUSES:

AVAILABLE AT MOST CAMPUS LOCATIONS

OTHER LOCATIONS: METROPOLITAN AND REGIONAL SCHOOL SITES UPON NEGOTIATION

This course equips students with the minimum work health and safety training required prior to undertaking construction work.

CONTENT

CPCWHS1001 PREPARE TO WORK SAFELY IN THE CONSTRUCTION INDUSTRY

ADVANCED CARPENTRY SKILLS

STACKABLE VET
20 STAGE 2 SACE CREDITS

COST \$2628

DURATION 20 DAYS AND 20 HRS HOMEWORK

NOMINAL HOURS 144

DELIVERY LOCATIONS TAFE SA CAMPUSES:

ELIZABETH, MOUNT GAMBIER, NOARLUNGA, PORT AUGUSTA, PORT PIRIE, TONSLEY, WHYALLA

OTHER LOCATIONS: GRAND JUNCTION TRADE TRAINING CENTRE, WESTERN TECHNICAL COLLEGE, ONSITE BY NEGOTIATION

This course teaches students how to use carpentry tools and equipment, carry out leveling operations and setting out.

CONTENT

CPCCCA2002 USE CARPENTRY TOOLS AND EQUIPMENT
CPCCOM3006 CARRY OUT LEVELING OPERATIONS
CPCCCA3002 CARRY OUT SETTING OUT





ADVANCED CARPENTRY SAFETY SKILLS

STACKABLE VET
20 STAGE 2 SACE CREDITS

COST \$2555

DURATION 20 DAYS AND 20 HRS HOMEWORK

NOMINAL HOURS 140

DELIVERY LOCATIONS

TAFE SA CAMPUSES: ELIZABETH, TONSLEY

OTHER LOCATIONS: AVAILABLE UPON
NEGOTIATION

This course teaches students how to work safely at heights, erect and dismantle restricted height scaffolding, operate elevated work platforms, install lining, panelling and moulding and setup indirect powder-actuated power tools.

CONTENT

CPCCCM2012 WORK SAFELY AT HEIGHTS

CPCCCM2008 ERECT AND DISMANTLE
RESTRICTED HEIGHT SCAFFOLDING

CPCCCM3001 OPERATE ELEVATED WORK
PLATFORMS UP TO 11 METRES

CPCCCA3024 INSTALL LINING, PANELLING
AND MOULDING

CPCCCA3027 SETUP, OPERATE AND MAINTAIN
INDIRECT ACTION POWDER-
ACTUATED POWER TOOLS

ADVANCED BRICKLAYING AND BLOCKLAYING

STACKABLE VET
20 STAGE 2 SACE CREDITS

COST \$2628

DURATION 20 DAYS AND 20 HRS HOMEWORK

NOMINAL HOURS 142

DELIVERY LOCATIONS

TAFE SA CAMPUSES: ELIZABETH,
NOARLUNGA, TONSLEY

OTHER LOCATIONS: SCHOOL SITES UPON
NEGOTIATION

This course teaches students skills in bricklaying and blocklaying, including how to lay masonry walls and corners.

CONTENT

CPCCBL3005 LAY MASONRY WALLS
AND CORNERS

CPCCO2013 CARRY OUT CONCRETING TO
SIMPLE FORMS

CPCCBL2001 HANDLE AND PREPARE
BRICKLAYING AND
BLOCKLAYING MATERIALS

CPCCBL2002 USE BRICKLAYING AND
BLOCKLAYING TOOLS
AND EQUIPMENT

ADVANCED WALL AND FLOOR TILING

STACKABLE VET
20 STAGE 2 SACE CREDITS

COST \$2555

DURATION 20 DAYS AND 20 HRS HOMEWORK

NOMINAL HOURS 140

DELIVERY LOCATIONS TAFE SA CAMPUSES:

ELIZABETH, NOARLUNGA, TONSLEY

OTHER LOCATIONS: SCHOOL SITES UPON
NEGOTIATION

This course teaches students how to install floor tiles and carry out concreting to simple forms.

CONTENT

CPCCWF3002 INSTALL FLOOR TILES

CPCCO2013 CARRY OUT CONCRETING TO
SIMPLE FORMS

FEE SUPPORT

Construction and Industry Training Board (CITB) working in partnership with TAFE SA are able to offer students a subsidy of \$2,000 towards any Advanced Skills courses including Advanced Carpentry Skills, Advanced Carpentry Safety Skills, Advanced Bricklaying and Blocklaying, Advanced Wall and Floor Tiling. To be eligible students need to have completed a Doorways2Construction Flexible Industry Pathway course. Find out more <https://citb.org.au/d2c-students/year-12-advanced-skills>



CERTIFICATE II IN CONSTRUCTION PATHWAYS

NATIONAL CODE CPC20220

Are you looking to enter a construction apprenticeship, but would like to get a taste of the industry first? If you're looking for a pathway to a full apprenticeship in the construction industry, this course is great starting point.

This certificate II qualification is an introduction to construction trades which includes Carpentry, Bricklaying and Tiling providing a pathway to the primary trades in the construction industry.

COURSE TYPE

Flexible Industry Pathway, suitable for Year 11 students.

COURSE DELIVERY

1 day per week over 35 weeks.

DAY, TIME & DATES

Day and times vary from location to location.

RECOMMENDATION

Completion of CPCCWHS1001 – Prepare to work safely in the construction industry is recommended for all students undertaking construction work or training.

It is available at an additional cost of \$140 per participant.

SACE CREDITS

Students can gain between 40-55 Stage 1 SACE credits on completion of this qualification, dependent on units chosen.

COURSE FEES

Subsidised co-payment \$187.20- \$258.70.

STUDY MODE

Classroom, online and workshop.

INCIDENTALS

Text Book \$100. Students must have the following Personal Protective Equipment (that students must organise themselves approx. \$120) including: **Long sleeve hi-vis shirt, Long pants, Steel capped boots, Clear safety glasses.**

SELECTION CRITERIA

Students must meet Flexible Industry Pathways eligibility criteria.

DELIVERY LOCATIONS

TAFE SA campuses: Elizabeth, Mount Barker, Mount Gambier, Noarlunga, Port Augusta, Port Pirie, Tonsley, Whyalla.

Other locations: Grand Junction Trade Training Centre, Western Technical College, onsite by negotiation.



COMPETENCIES DELIVERED

Competencies and scheduled class time may differ from campus to campus.

UNIT NAME	NATIONAL CODE	NOMINAL HOURS
Work effectively and sustainably in the construction industry	CPCCOM1012	20
Plan and organise work	CPCCOM1013	20
Carry out measurements and calculations	CPCCOM1015	20
Undertake a basic construction project	CPCCVE1011	40
Apply WHS requirements, policies and procedures in the construction industry	CPCCWHS2001	20

ELECTIVES

Assemble components	CPCCJN2001	32
Handle construction materials	CPCCCM2004	16
Undertake basic estimation and costing	CPCCCM1011	16
Apply basic levelling procedures	CPCCCM2006	8
Use construction tools and equipment	CPCCCM2005	96
Handle and prepare bricklaying and blocklaying materials	CPCCBL2001	16
Use bricklaying and blocklaying tools and equipment	CPCCBL2002	30
Undertake basic installation of wall tiles	CPCCCM2013	120
Use solid plastering tools and equipment	CPCCSP2002	80
Handle carpentry materials	CPCCCA2011	16
Carry out basic demolition	CPCCCM2009	32

Course requires 5 core and 5 elective units. Elective units will vary by delivery location.

APPROX. TOTAL HOURS: 288-398 DEPENDING ON UNITS

ELECTROTECHNOLOGY

CERTIFICATE II IN ELECTROTECHNOLOGY (CAREER START)

NATIONAL CODE UEE22020

This course opens the door to careers in the high-tech electrotechnology industry. The growing industry requires qualified tradespersons in the areas of domestic and commercial electrical installations, electrical power generation and distribution, telecommunications and security systems, air-conditioning and refrigeration, instrumentation and process control, renewable and sustainable energy, and electric vehicles and rail transport.

You will learn the fundamental electrical knowledge and skills to be work ready. It also provides a pathway to those who are wanting to gain an apprenticeship as an Electrician. If an apprenticeship is obtained many of the units are transferable to Certificate III in Electrotechnology Electrician (UEE30820).

The Electrotechnology industry highly regard this course as a benchmark for applying for apprenticeships with major South Australian electrical companies.

COURSE TYPE

Flexible Industry Pathway, suitable for Year 11 students.

COURSE DELIVERY

1 day per week over 12 months.
Regional locations and block delivery available upon negotiation with TAFE SA.

DAY, TIME & DATES

8.00am - 4.30pm, starting Term 1.
Day and times vary from location to location.

SACE CREDITS

Students can gain up to a maximum of 50 Stage 1 SACE credits on completion of this qualification, dependent on units chosen.

COURSE FEES

Approx. \$260 depending on units chosen.

STUDY MODE

Classroom and simulated work environment onsite.

INCIDENTALS

Students/Schools must purchase two course textbooks (Electrical Trade Practices 2e and Electrical Principles 4e), which can be purchased via TAFE SA at a cost of \$170 per student, or can be purchased via an alternate bookstore. Students must have the following Personal Protective Equipment (that students must organise themselves approx. \$120) including: **Long sleeve hi-vis shirt; Long pants; Steel capped boots; Clear safety glasses.**

SELECTION CRITERIA

Students must meet Flexible Industry Pathways eligibility criteria.

DELIVERY LOCATIONS

TAFE SA campuses: Berri, Elizabeth, Mount Gambier, Noarlunga, Port Augusta, Port Pirie, Regency, Tonsley, Whyalla.

Other locations: Grand Junction Trade Training Centre, Western Technical College, onsite by negotiation.



COMPETENCIES DELIVERED

Competencies and scheduled class time may differ from campus to campus.

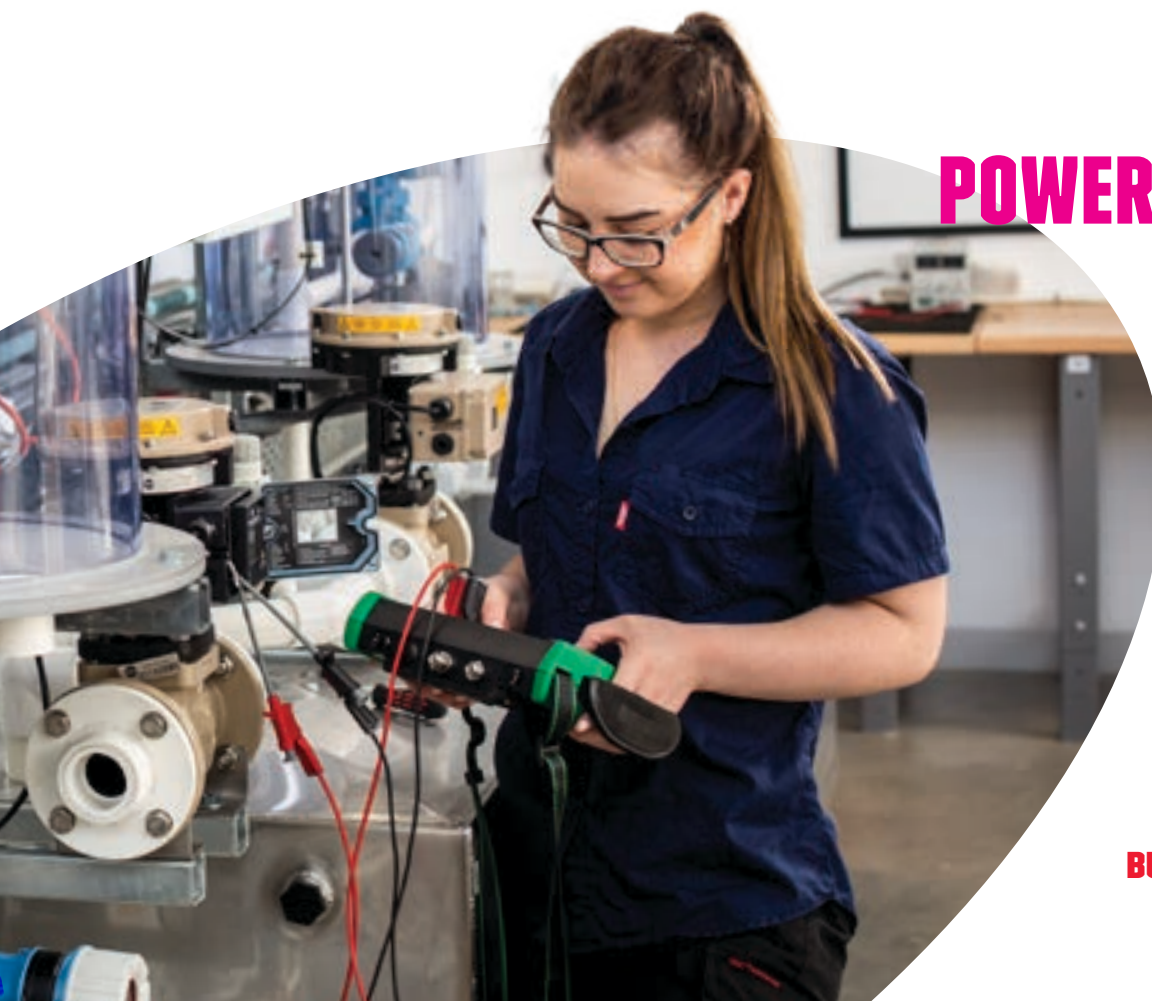
UNIT NAME	NATIONAL CODE	NOMINAL HOURS
Prepare to work safely in the construction industry	CPCCWHS1001	10
Apply work health and safety regulations, codes and practices in the workplace	UEECD0007	20
Carry out routine work activities in an energy sector environment	UEECD0009	40
Provide basic sustainable energy solutions for energy reduction in residential premises	UEERE0021	40
Provide solutions and report on routine electrotechnology problems	UEECD0038	60
Solve problems in single path circuits	UEECD0046	40
Use routine equipment/plant/technologies in an energy sector environment	UEECD0052	40
Identify and select components, accessories and materials for energy sector work activities	UEECD0021	20

ELECTIVES

Apply environmentally and sustainable procedures in the energy sector	UEERE0001	20
Fabricate, assemble and dismantle utilities industry components	UEECD0019	40
Produce products for carrying out energy sector work activities	UEECD0033	40
Fix and secure electrotechnology equipment	UEECD0020	20
Attach cords and plugs to electrical equipment for connection to a single phase 230 Volt supply	UEERL0001	20

Course requires 8 core and 5 elective units to complete qualification.

APPROX. TOTAL HOURS: 400 DEPENDING ON UNITS



POWER UP.

BUILDING & CONSTRUCTION

TAFE SA VET FOR SECONDARY STUDENTS 2025



**JUST ADD
WATER
(OR GAS).**

PLUMBING

CERTIFICATE II IN PLUMBING (PRE-APPRENTICESHIP)

NATIONAL CODE 22569VIC

This qualification is designed to provide a pathway into a career within the plumbing industry. It includes a broad range of plumbing related skills and competencies and ensures students are work ready. Additional competencies for Year 12 students are available through Stackable VET and employment outcomes are predominantly achieved through an Australian Apprenticeship.

COURSE TYPE

Flexible Industry Pathway, suitable for Year 11 students.

COURSE DELIVERY

1 day per week over 18 months
(54 weeks/ 3 semesters).

DAY, TIME & DATES

Full days – day and times vary from location to location.

SACE CREDITS

Students can gain up to a maximum of 65 Stage 1 SACE credits on completion of this course.

COURSE FEES

Approx. \$319.80 depending on units chosen.

STUDY MODE

Classroom, online and workshop.

INCIDENTALS

Students must have the following Personal Protective Equipment (that students must organise themselves approx. \$120) including: **Long sleeve hi-vis shirt; Long pants; Steel capped boots; Clear safety glasses.**

SELECTION CRITERIA

Students must meet Flexible Industry Pathways eligibility criteria.

DELIVERY LOCATION

TAFE SA campuses: Elizabeth, Mount Gambier, Noarlunga.

Other locations: Western Technical College.

COMPETENCIES DELIVERED

Competencies and scheduled class time may differ from campus to campus.

UNIT NAME	NATIONAL CODE	NOMINAL HOURS
Apply basic sheet metal practices	VU23046	50
Apply WHS requirements, policies and procedures in the construction industry	CPCCWHS2001	20
Carry out interactive workplace communication	CPCPCM2039A	10
Carry out measurements and calculations	CPCCCM1015	20
Cut and penetrate building materials and structures	VU23047	30
Fabricate simple plumbing pipe systems	VU23048	30
Identify career pathways in the plumbing industry	VU23049	30
Perform basic oxy-acetylene welding and cutting	VU23050	20
Prepare to work in the plumbing industry	VU23051	20
Prepare to work safely in the construction industry	CPCCWHS1001	6
Produce technical drawings	CUAACD303	50
Provide basic emergency life support	HLTAID010	40
Read and interpret plans and specifications	CPCCCM2001	36
Use and apply basic levelling equipment for plumbing	VU23052	8
Use basic electric welding equipment and techniques	VU23053	20
Use basic plumbing hand tools	VU23054	50
Use basic power tools	VU23055	20
Use plumbing pipes, fittings and fixtures to simulate plumbing installations	VU23056	30
Write simple documents	BSBWRT311	30

Course requires 19 core units to complete qualification.

APPROX. TOTAL HOURS: 492 DEPENDING ON UNITS

BUSINESS

RETAIL

If you love the energy of a busy retail store, you can gain the skills required to succeed in this dynamic industry.

INTRODUCTION TO RETAIL

STACKABLE VET
10 STAGE 1 SACE CREDITS

COST \$428

DURATION 6 DAYS.

1 DAY PER WEEK FOR 6 WEEKS

NOMINAL HOURS 90

DELIVERY LOCATIONS TAFE SA CAMPUSES:
ADELAIDE CITY, MOUNT GAMBIER, NOARLUNGA

This course provides students with the necessary skills to engage and sell to the retail customer.

CONTENT

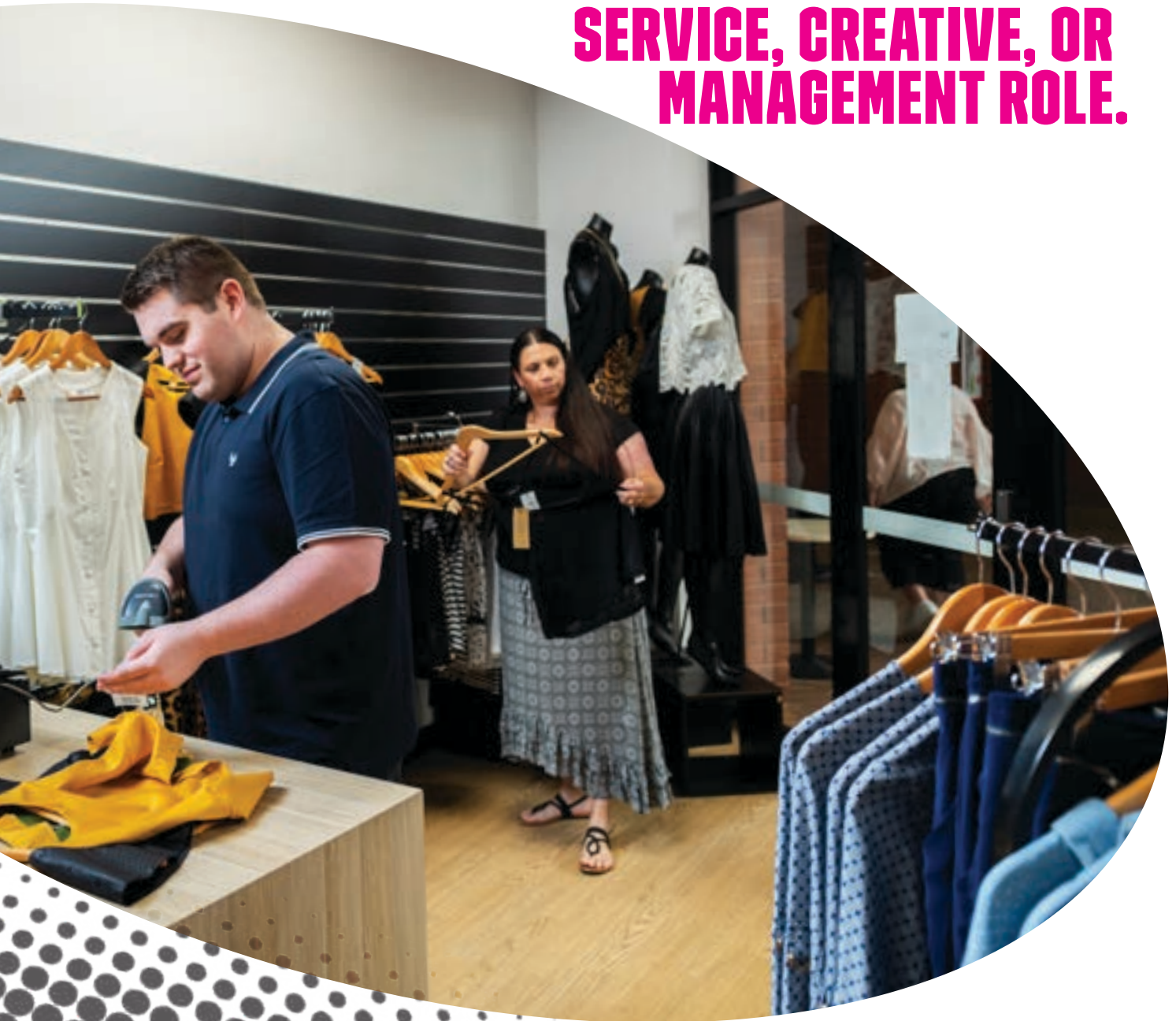
SIRXCEG001 ENGAGE THE CUSTOMER

SIRXCOM001 COMMUNICATE IN THE WORKPLACE
TO SUPPORT TEAM AND
CUSTOMER OUTCOMES

SIRXSLS001 SELL TO THE RETAIL CUSTOMER



PREPARE FOR A CUSTOMER SERVICE, CREATIVE, OR MANAGEMENT ROLE.



COMMUNITY SERVICES

If you're passionate about people and social justice, get the skills to work in the community, and be a part of something bigger. Community services workers work with the aged, people with disabilities, children, or those in need of refuge or advocacy. They can also promote social benefit to the community through recreation, education and employment.

EARLY CHILDHOOD EDUCATION

CERTIFICATE III IN EARLY CHILDHOOD EDUCATION AND CARE

NATIONAL CODE CHC30121

Develop the skills and knowledge you need to inspire and support children as an Early Childhood Educator. You could work in a childcare, preschool, classroom, out-of-school-hours care or even a community education setting. The Certificate III in Early Childhood Education and Care is the minimum requirement for employment in the early childhood industry.

COURSE TYPE

Flexible Industry Pathway, suitable for Year 11 students.

COURSE DELIVERY

2 days per week - 1 day per week for delivery, 1 day per week for 30 weeks in total for vocational placement over 2 years (76 weeks).

Year 1 – 1 day per week delivery (35 weeks)

Year 1 – 1 day per week vocational placement (15 weeks)

Year 2 – 1 day per week delivery (35 weeks)

Year 2 – 1 day per week vocational placement (15 weeks)

DAY, TIME & DATES

Wednesday, 9:00am - 4:30pm

February to December (may vary depending on campus). Not all units are offered during regular school hours and students may need to attend classes outside of school hours. Negotiation may occur regarding additional time for vocational placement due to training package requirements.

SACE CREDITS

Students can gain up to a maximum of 155 Stage 2 SACE credits on completion of this qualification, dependent on units chosen.

COURSE FEES

Subsidised co-payment \$1,866.60.

STUDY MODE

Online delivery, virtual and physical face-to-face workshops and simulated work environment on campus.

INCIDENTALS

Students are required to undertake a **DHS Screening Check**. Students are also required to pay for and attend **Responding to Risks of Harm, Abuse and Neglect – Education and Care (RRHAN-EC)** (\$88.00) (subject to change) before attending vocational placement.

SELECTION CRITERIA

Students must meet Flexible Industry Pathways eligibility criteria.

DELIVERY LOCATIONS

TAFE SA campuses: Elizabeth, Mount Gambier, Murray Bridge, Port Pirie.

Other locations: Findon Technical College (subject to meeting minimum numbers).

OTHER INFORMATION

Upon request, a person doing a placement in an education or early childhood setting might be asked to provide proof of their vaccination status.

To achieve this qualification, the candidate must have completed at least 160 hours of vocational placement as detailed in the Assessment Requirements of the units of competency. Vocational placement includes 24 days x 7 hours of vocational placement from 9.00-4.30 with a 30 minute lunch break in a regulated education and care program. Placement days will be scheduled to commence in term 2 in the first year and are in addition to scheduled class days in line with required assessment tasks over the two years.



COMPETENCIES DELIVERED

Competencies and scheduled class time may differ from campus to campus.

UNIT NAME	NATIONAL CODE	NOMINAL HOURS
Work effectively in children's education and care	CHCECE056	65
Use an approved learning framework to guide practice	CHCECE034	80
Meet legal and ethical obligations in children's education and care	CHCECE055	60
Identify and respond to children and young people at risk	CHCPRT001	40
Support children's health, safety and wellbeing	CHCECE031	160
Participate in workplace health and safety	HLTWHS001	20
Provide First Aid in an education and care setting	HLTAID012	22
Develop positive and respectful relationships with children	CHCECE033	100
Support the holistic learning and development of children	CHCECE035	100
Nurture babies and toddlers	CHCECE032	108
Observe children to inform practice	CHCECE038	40
Provide experiences to support children's play and learning	CHCECE036	75
Support inclusion and diversity	CHCECE030	63
Encourage understanding of Aboriginal and/or Torres Strait Islander peoples' cultures	CHCECE054	55
Support children to connect with the natural environment	CHCECE037	50
ELECTIVES		
Follow basic food safety practices	HLTFSE001	30
Organise personal workplace priorities	BSBPEF301	30

Course requires 15 core and 2 elective units to complete qualification.

APPROX. TOTAL HOURS: 1098 DEPENDING ON UNITS

INDIVIDUAL SUPPORT

CERTIFICATE III IN INDIVIDUAL SUPPORT (AGEING)

NATIONAL CODE CHC33021

Individual support workers play a vital role in helping to meet the needs of our ageing population. They are empathetic, patient and detail-oriented carers who assist in promoting the wellbeing and independence of older people. The Certificate III in Individual Support (Ageing) is a course teaching the theory, skills and practices required to begin a rewarding career in the aged care sector. This course provides skills for work primarily undertaken in residential aged care facilities under direct or regular supervision within clearly defined organisational policies, guidelines and service delivery plans. It is also accepted by various community-based service providers.

Further study pathways include:

> Diploma in Nursing (HLT54121)

COURSE TYPE

Flexible Industry Pathway suitable for Year 11 students. Year 12 students are welcome to apply however will not complete qualification by end of Year 12 which may impact SACE and ATAR.

COURSE DELIVERY

18 months (60 weeks) including placement.

DAY, TIME & DATES

Part-time, days and time vary by campus. Not all units are offered during regular school hours and students may need to attend classes outside of school hours. Placement may occur during school holidays.

RECOMMENDATION

It is recommended that students do not have a full study band at school if they wish to also study this qualification at TAFE SA.

SACE CREDITS

Up to 100 Stage 2 SACE credits on completion of this qualification, dependent on units chosen.

COURSE FEES

Subsidised co-payment \$1,526.60.

STUDY MODE

Blended Methodology (Workshops are a mix of virtual and face to face classes, including simulated learning in a skills lab).

INCIDENTALS

Students are required to pay for a **National Police Check**. Refer to SAPOL website for current pricing – www.police.sa.gov.au. **DHS and NDIS Screening check** is free for School students undertaking work placement. There is a **\$35 incidentals fee for a TAFE SA shirt to wear during work placement**.

SELECTION CRITERIA

Students must meet Flexible Industry Pathways eligibility criteria.

DELIVERY LOCATIONS

TAFE SA campuses: Mount Gambier, Noarlunga.

Other locations: By negotiation.

OTHER INFORMATION

Prior to placement allocation students must provide evidence of full immunisation status including, but not limited to COVID-19 and flu vaccinations as per the Immunisation for Health Care Workers in South Australia Policy Directive.

To achieve this qualification, the candidate must have completed at least 120 hours of vocational placement as detailed in the Assessment Requirements of the units of competency.



**PUT YOUR
CARING
NATURE INTO
PRACTISE.**

COMPETENCIES DELIVERED

Competencies and scheduled class time may differ from campus to campus.

UNIT NAME	NATIONAL CODE	NOMINAL HOURS
Provide individualised support	CHCCCS031	100
Facilitate the empowerment of people receiving support	CHCCCS038	120
Support independence and wellbeing	CHCCCS040	80
Recognise healthy body systems	CHCCCS041	80
Communicate and work in health or community services	CHCCOM005	30
Work with diverse people	CHCDIV001	40
Work legally and ethically	CHCLEG001	55
Apply basic principles and practices of infection prevention and control	HLTINF006	35
Follow safe work practices for direct client care	HLTWHS002	25

COMPULSORY ELECTIVES

Provide support to people living with dementia	CHCAGE011	80
Work effectively in aged care	CHCAGE013	65
Deliver care services using a palliative approach	CHCPAL003	70

OTHER ELECTIVES

Recognise and report risk of fall	CHCAGE007	30
Support relationships with carer and family	CHCCCS036	70
Provide first aid	HLTAID011	18

Course requires 9 core and 6 elective units, other units by negotiation.

APPROX. TOTAL HOURS: 898 DEPENDING ON UNITS

COMMUNITY SERVICES

TAFE SA VET FOR SECONDARY STUDENTS 2025

CERTIFICATE III IN INDIVIDUAL SUPPORT (DISABILITY)

NATIONAL CODE CHC33021

Develop the skills to support individuals with disability, living in the community and/or supported accommodation. Learn about independence and wellbeing, communication, working with diverse people, legal and ethical requirements, healthy body systems and safe work practices.

Further study pathways include:

> Diploma in Nursing (HLT54121)

COURSE TYPE

Flexible Industry Pathway suitable for Year 11 students. Year 12 students are welcome to apply however will not complete qualification by end of Year 12 which may impact SACE and ATAR.

COURSE DELIVERY

1 day per week over 56 weeks (18 Months)
8.30am-4.00pm daily.

DAY, TIME & DATES

Part-time, days and time vary by campus. Not all units are offered during regular school hours and students may need to attend classes outside of school hours. Placement may occur during school holidays.

RECOMMENDATION

It is recommended that students do not have a full study band at school if they wish to also study this qualification at TAFE SA.

COURSE FEES

Subsidised co-payment \$2370.60.

COMPETENCIES DELIVERED

Competencies and scheduled class time may differ from campus to campus.

SACE CREDITS

Students can gain up to approximately 90 Stage 2 SACE Credits on completion of this qualification, dependent on units chosen to be confirmed with SACE recognition register.

STUDY MODE

Blended Methodology (Workshops are a mix of virtual and face to face classes, including simulated learning in a skills lab).

INCIDENTALS

Students are required to pay for a **National Police Check** refer to SAPOL website for current pricing – www.police.sa.gov.au. **DHS and NDIS Screening check** is free for School students undertaking work placement.

SELECTION CRITERIA

Students must meet VET for Secondary School Students eligibility criteria.

DELIVERY LOCATIONS

TAFE SA campuses: Murray Bridge.

Other locations: By negotiation (subject to meeting minimum numbers).

OTHER INFORMATION

Prior to placement allocation students must provide evidence of full immunisation status including, but not limited to COVID-19 and flu vaccinations as per the Immunisation for Health Care Workers in South Australia Policy Directive.

To achieve this qualification, the candidate must have completed at least 120 hours of vocational placement as detailed in the Assessment Requirements of the units of competency.



COMPETENCIES DELIVERED

Competencies and scheduled class time may differ from campus to campus.

UNIT NAME	NATIONAL CODE	NOMINAL HOURS
Provide individualised support	CHCCCS031	100
Facilitate the empowerment of people receiving support	CHCCCS038	120
Support independence and wellbeing	CHCCCS040	80
Recognise healthy body systems	CHCCCS041	80
Communicate and work in health and community services	CHCCOM005	30
Work with diverse people	CHCDIV001	40
Work legally and ethically	CHCLEG001	55
Apply basic principles and practices of infection prevention and control	HLTINF006	35
Follow safe work practices for direct client care	HLTWHS002	25

COMPULSORY ELECTIVES

Contribute to ongoing skills development using a strengths-based approach	CHCDIS011	40
Support community participation and social inclusion	CHCDIS012	60
Work effectively in disability	CHCDIS020	65

OTHER ELECTIVES

Follow established person-centred behaviour supports	CHCCCS044	60
Support relationships with carer and family	CHCCCS036	70
Provide first aid	HLTAID011	18

Course requires 9 core and 6 elective units, other units by negotiation.

APPROX. TOTAL HOURS: 878 DEPENDING ON UNITS

HAIR & BEAUTY

Combine your creativity and people skills with a career in hair and beauty. Learn from TAFE SA's industry expert lecturers and carve out a career helping others to look and feel beautiful.

BEAUTY

CERTIFICATE II IN RETAIL COSMETICS

NATIONAL CODE SHB20121

The Certificate II in Retail Cosmetics is the ideal qualification to start your career in the make-up or beauty industry. You will learn a range of skills to provide make-up for varying occasions, client care, sell and recommend beauty products to an industry standard.

COURSE TYPE

Flexible Industry Pathway, suitable for Year 11 students.

COURSE DELIVERY

1 day per week over 30 weeks
9.00am-5.00pm daily.

RECOMMENDATION

It is recommended that students do not have a full study band at school if they wish to also study this qualification at TAFE SA.

SACE CREDITS

Students can gain up to a maximum of 70 Stage 1 SACE credits on completion of this qualification, dependent on units chosen.

COURSE FEES

Subsidised co-payment \$328.25.

STUDY MODE

Simulated salon, classroom and online.

INCIDENTALS

Students are required to purchase a **student equipment kit** – \$210 provided by external supplier (price subject to change). It is a requirement that a **black shirt and black pants** are worn as per workplace standards. An optional **TAFE SA t-shirt** is available for purchase – \$40.

SELECTION CRITERIA

Students must meet Flexible Industry Pathways eligibility criteria.

DELIVERY LOCATIONS

TAFE SA campuses: Adelaide City, Berri, Elizabeth, Mount Gambier, Noarlunga, Port Pirie.

Other locations: Western Technical College, onsite and other locations by negotiation.



COMPETENCIES DELIVERED

Competencies and scheduled class time may differ from campus to campus.

UNIT NAME	NATIONAL CODE	NOMINAL HOURS
Demonstrate retail skin care products	SHBBCCS004	25
Advise on beauty products and services	SHBBCCS005	30
Design and apply make-up	SHBBMUP009	45
Conduct salon financial transactions	SHBXCCS007	25
Comply with organisational requirements within a personal services environment	SHBXIND003	45
Communicate as part of a salon team	SHBXIND005	30
Apply safe hygiene, health and work practices	SHBXWHS003	40
Organise personal work requirements	SIRXIND003	20
Maintain ethical and professional standards when using social media and online platforms	SIRXOSM002	50

ELECTIVES

Maintain infection control standards	SHBBINF002	75
Participate in sustainable work practices	BSBSUS211	20
Research and apply beauty industry information	SHBBRES003	20
Produce visual merchandise displays	SIRRMER001	35
Use social media and online tools	SIRXOSM003	35
Greet and prepare clients for salon services	SHBXCCS009	10

Course requires 9 core and 6 elective units, other units by negotiation.

APPROX. TOTAL HOURS: 505 DEPENDING ON UNITS

ADVANCED BEAUTY SERVICES

STACKABLE VET
20 STAGE 2 SACE CREDITS

COST \$2081

DURATION 30 DAYS

NOMINAL HOURS 150

DELIVERY LOCATIONS TAFE SA CAMPUS: ADELAIDE CITY

OTHER LOCATIONS: BY NEGOTIATION

PREREQUISITES STUDENTS MUST HAVE COMPLETED CERTIFICATE III IN RETAIL COSMETICS (SHB30121)

ADDITIONAL COSTS STUDENTS WILL NEED TO PURCHASE TWEEZERS, 2 SMALL GLASS BOWLS, A LARGE STAINLESS STEEL BOWL AND A BATH TOWEL

This course equips students with skills in applying cosmetic tanning products, and providing lash and brow as well as waxing services to clients.

CONTENT

SHBBBOS007 APPLY COSMETIC TANNING PRODUCTS

SHBBFAS004 PROVIDE LASH AND BROW SERVICES

SHBBHRS010 PROVIDE WAXING SERVICES

HAIRDRESSING

CERTIFICATE II IN SALON ASSISTANT

NATIONAL CODE SHB20216

If you have a passion for hairdressing or barbering, this course is your training pathway.

You'll gain practical skills in hairdressing and barbering, as well as learn about interacting with clients and providing hairdressing and barbering services, as well as developing skills to become an integral part of a highly creative team.

COURSE TYPE

Flexible Industry Pathway, suitable for Year 11 students.

COURSE DELIVERY

1 day per week over 3 terms
9.00am-4.00pm daily.

RECOMMENDATION

It is recommended that students do not have a full study band at school if they wish to also study this qualification at TAFE SA.

SACE CREDITS

Students can gain up to a maximum of 45 Stage 1 SACE credits on completion of this qualification, dependent on units chosen.

COURSE FEES

Subsidised co-payment \$204.75- \$211.25.

STUDY MODE

Simulated salon, classroom and online.

INCIDENTALS

Students are required to purchase a **student equipment kit** – \$350-495 provided by external supplier (price subject to change). It is a requirement that a **black shirt and black pants** are worn as per workplace standards. An optional **TAFE SA t-shirt** is available for purchase – \$40.

SELECTION CRITERIA

Students must meet Flexible Industry Pathways eligibility criteria.

DELIVERY LOCATIONS

TAFE SA campuses: Adelaide City, Berri, Elizabeth, Mount Gambier, Noarlunga, Port Pirie, Whyalla.

Other locations: Western Technical College, onsite and other locations by negotiation.



COMPETENCIES DELIVERED

Competencies and scheduled class time may differ from campus to campus.

UNIT NAME	NATIONAL CODE	NOMINAL HOURS
Contribute to health and safety of self and others	BSBWHS201	20
Provide shampoo and basin services	SHBHBAS001	40
Dry hair to shape	SHBHDES001	40
Maintain and organise tools, equipment and work areas	SHBHIND001	20
Conduct salon financial transactions	SHBXCCS001	25
Greet and prepare clients for salon services	SHBXCCS003	10
Comply with organisational requirements within a personal services environment	SHBXIND001	45
Communicate as part of a salon team	SHBXIND002	30

ELECTIVES

Provide head, neck and shoulder massages for relaxation	SHBHBAS002	20
Recommend products and services	SHBXCCS004	20
Produce visual merchandise displays	SIRRMER001	35
Research and use hairdressing industry information	SHBHIND002	15

Course requires 8 core and 4 elective units, other units by negotiation.

APPROX. TOTAL HOURS: 315-325 DEPENDING ON UNITS

HEALTH & LIFESTYLE

Work towards a healthier community. With TAFE SA's health and lifestyle qualifications, you can learn the necessary skills to work in the growing health industry, from allied health to dental, to sport and recreation, TAFE SA has got you covered.

ALLIED HEALTH

CERTIFICATE III IN HEALTH SERVICES ASSISTANCE

NATIONAL CODE HLT33115

Students will gain the skills to provide safe, high-quality care to clients, under supervision in a range of settings, including hospitals and aged care facilities. This course provides an excellent foundation for studies in allied health, aged care, disability and nursing.

Further study pathways include:

- > Certificate III in Individual Support – Ageing/Disability (CHC33021)
- > Certificate IV in Allied Health Assistance (HLT43021)
- > Diploma of Nursing (HLT54121)

COURSE TYPE

Flexible Industry Pathway, suitable for Year 11 students.

COURSE DELIVERY

1 day per week over 56 weeks (18 Months). Please note 80 hours of work placement is required in addition to the listed course delivery. Suitable for Year 11 students. Year 12 student are welcome to apply however will not complete qualification by end of year 12 which may impact SACE and ATAR.

DAY, TIME & DATES

9.30am - 4.00pm. Day and times vary, depending on delivery site and individual programs. Students should commence at start of semester.

RECOMMENDATION

It is recommended that students do not have a full study band at school if they wish to also study this qualification at TAFE SA.

SACE CREDITS

Students can gain between 55-80 Stage 2 SACE credits on completion of this qualification, dependent on units chosen.

COURSE FEES

Subsidised co-payment \$1194-\$1540.

STUDY MODE

Blended Methodology (Workshops are a mix of virtual and face to face classes, including simulated learning in a skills lab).

INCIDENTALS

Students are required to pay for a **National Police Check** refer to SAPOL website for current pricing – www.police.sa.gov.au. **DHS Screening check** is free for School students undertaking work placement. There is a \$35 incidentals fee for a **TAFE SA shirt** to wear during work placement.

SELECTION CRITERIA

Students must meet Flexible Industry Pathways eligibility criteria. Prior to placement allocation students must provide evidence of full immunisation status including, but not limited to COVID-19 and flu vaccinations as per the Immunisation for Health Care Workers in South Australia Policy Directive.

DELIVERY LOCATION

Adelaide City.

COMPETENCIES DELIVERED

Competencies and scheduled class time may differ from campus to campus.

UNIT NAME	NATIONAL CODE	NOMINAL HOURS
Apply basic principles and practices of infection prevention and control	HLTINF006	35
Recognise healthy body systems	HLTAAP001	70
Work with diverse people	CHCDIV001	40
Interpret and apply medical terminology appropriately	BSBMED301	60
Participate in workplace health and safety	HLTWHS001	20
Organise personal work priorities and development	BSBWOR301	30
Communicate and work in health or community services	CHCCOM005	30

ELECTIVES

Follow basic food safety practices	HLTFSE001	30
Prepare and maintain beds	CHCCCS012	15
Transport individuals	CHCCCS026	20
Maintain a high standard of service	CHCCCS010	30
Manage personal stressors in the work environment	HLTWHS006	25
Assist with movement	CHCCCS002	25
Provide first aid	HLTAID011	18
Provide cardiopulmonary resuscitation	HLTAID009	4

Course requires 7 core and 8 elective units to complete the qualification.

APPROX. TOTAL HOURS: 442-570 DEPENDING ON UNITS



CERTIFICATE III IN ALLIED HEALTH ASSISTANCE

NATIONAL CODE HLT33021

This course provides you with the skills and knowledge to work in the growing health industry as an Allied Health Assistant. The Certificate III in Allied Health Assistance equips you with a solid understanding of how to assist with allied health programming, how to interpret basic medical terminology and how to comply with infection prevention and control policies.

You will also learn the important skill of communicating effectively with both professionals and patients. Workers at this level will operate under direct or regular supervision within clearly defined organisational policies, guidelines, and service delivery plans.

Further study pathways include:

> Certificate IV in Allied Health Assistance (HLT43021)

> Diploma of Nursing (HLT54121)

COURSE DELIVERY

1 day per week over 56 weeks (18 Months). Please note 120 hours of work placement is required in addition to the listed course delivery. Suitable for Year 11 students. Year 12 students are welcome to apply however will not complete qualification by end of Year 12 which may impact SACE and ATAR.

DAY, TIME & DATES

9.30am - 4.00pm. Day and times vary, depending on delivery site and individual programs. Students should commence at start of semester.

RECOMMENDATION

It is recommended that students do not have a full study band at school if they wish to also study this qualification at TAFE SA.

SACE CREDITS

Students can gain 55 Stage 2 SACE credits on completion of this qualification, dependent on units chosen.

COURSE FEES

Subsidised co-payment approx. \$1045.

STUDY MODE

Blended Methodology (Workshops are a mix of virtual and face to face classes, including simulated learning in a skills lab).

INCIDENTALS

Students are required to pay for a **National Police Check** refer to SAPOL website for current pricing – www.police.sa.gov.au.

DHS Screening check is free for School students undertaking work placement.

There is a \$35 incidentals fee for a **TAFE SA shirt** to wear during work placement.

SELECTION CRITERIA

Students must meet Flexible Industry Pathways eligibility criteria. Prior to placement allocation students must provide evidence of full immunisation status including, but not limited to COVID-19 and flu vaccinations as per the Immunisation for Health Care Workers in South Australia Policy Directive.

DELIVERY LOCATIONS

TAFE SA campuses: Adelaide City, Berri, Mount Gambier, Mount Barker, Port Pirie.

COMPETENCIES DELIVERED

Competencies and scheduled class time may differ from campus to campus.

UNIT NAME	NATIONAL CODE	NOMINAL HOURS
Interpret and apply medical terminology appropriately	BSBMED301	60
Communicate and work in health or community services	CHCCOM005	30
Work with diverse people	CHCDIV001	40
Assist with an allied health program	HLTAHA027	80
Recognise impact of health conditions	HLTAHA049	100
Apply basic principles and practices of infection prevention and control	HLTINF006	35
Participate in workplace health and safety	HLTWH001	20

ELECTIVES

Provide first aid	HLTAID011	18
Assist with movement	CHCCCS002	25
Recognise and report risk of falls	CHCAGE007	30
Respond effectively to behaviours of concern	CHCCCS020	20
Support relationships with carer and family	CHCCCS036	70

Course requires 7 core and 5 elective units to complete the qualification.

APPROX. TOTAL HOURS: 508

SPORT & RECREATION

ADVANCED GYM BASED PROGRAMS FOR INDIVIDUAL CLIENTS

STACKABLE VET

20 STAGE 2 SACE CREDITS

COST \$1665

DURATION 16 DAYS

NOMINAL HOURS 150

DELIVERY LOCATION

TAFE SA CAMPUS: REGENCY

This course equips students with skills and knowledge in facilitating gym based programs for individual clients.

CONTENT

SISFFIT040	DEVELOP AND INSTRUCT GYM BASED EXERCISE PROGRAMS FOR INDIVIDUAL CLIENTS
SISFFIT047	USE ANATOMY AND PHYSIOLOGY KNOWLEDGE TO SUPPORT SAFE AND EFFECTIVE EXERCISE

**GET TRAINING
FOR AN ACTIVE
CAREER.**



HEALTH & LIFESTYLE

TAFE SA VET FOR SECONDARY STUDENTS 2025

HOSPITALITY & TOURISM

Build a career in hospitality and tourism. Food, beverage, tourism, events and travel are always in demand, leading to a growing range of career opportunities. TAFE SA delivers a range of courses to prepare you for a career in the hospitality, events and tourism industries.

TOURISM

INTRODUCTION TO TOURISM

STACKABLE VET
10 STAGE 1 SACE CREDITS

COST \$1200

DURATION 20 SESSIONS (2 DAYS PER WEEK)

NOMINAL HOURS 90

DELIVERY LOCATION

TAFE SA CAMPUS: REGENCY

FURTHER INFORMATION THERE IS A MANDATORY FULL DAY EXCURSION TO KANGAROO ISLAND (7AM - 7PM) AS THIS FORMS PART OF ASSESSMENT REQUIREMENTS. LOCATION MAY VARY DEPENDING ON AVAILABILITY.

This course provides students with skills in sourcing and using information on the tourism and travel industry.

CONTENT

SITTIND003 SOURCE AND USE INFORMATION ON THE TOURISM AND TRAVEL INDUSTRY

SITTTVL001 ACCESS AND INTERPRET PRODUCT INFORMATION

A WORLD OF
OPPORTUNITIES.



BAKING

INTRODUCTION TO PASTRY

STACKABLE VET
10 STAGE 1 SACE CREDITS

COST \$490

DURATION 1 DAY PER WEEK FOR 6 WEEKS

NOMINAL HOURS 70

DELIVERY LOCATIONS

TAFE SA CAMPUS: REGENCY

OTHER LOCATIONS: AVAILABLE FOR DELIVERY AT A SCHOOL SITE UPON SITE INSPECTION

FURTHER INFORMATION STUDENTS TO BRING AN APRON AND WEAR ENCLOSED TOE SHOES. STUDENTS CAN WEAR THEIR SCHOOL UNIFORM OR CASUAL CLOTHES (LONG PANTS). HAIR NETS PROVIDED. 6 WEEKS DELIVERY AND 1 HR PER WEEK HOMEWORK. WHERE DELIVERED AT A SCHOOL SITE, THIS CAN BE DONE IN A HOME ECONOMICS ROOM.

In this course you will produce non laminated pastries such as custard tarts, apple pies, quiche and profiteroles. You will learn the theory behind the ingredients and processes we use to make these products, as well as each student being hands on producing these items and then tasting them.

CONTENT

FBPRBK2001 ASSIST NON LAMINATE PASTRY PRODUCTION

ADVANCED PASTRY AND BISCUIT MAKING

STACKABLE VET
20 STAGE 2 SACE CREDITS

COST \$980

DURATION 1 DAY PER WEEK FOR 10 WEEKS

NOMINAL HOURS 140

DELIVERY LOCATIONS

TAFE SA CAMPUS: REGENCY

OTHER LOCATIONS: AVAILABLE FOR DELIVERY AT A SCHOOL SITE UPON SITE INSPECTION

FURTHER INFORMATION STUDENTS TO BRING AN APRON AND WEAR ENCLOSED TOE SHOES. STUDENTS CAN WEAR THEIR SCHOOL UNIFORM OR CASUAL CLOTHES (LONG PANTS). HAIR NETS PROVIDED. 10 WEEKS DELIVERY AND 1 HR PER WEEK HOMEWORK. WHERE DELIVERED AT A SCHOOL SITE, THIS CAN BE DONE IN A HOME ECONOMICS ROOM.

In this course you will produce products like cornflake cookies, Viennese biscuits, macarons and meringues. We teach about the different ingredients we use and important points on how to make these products well. Students will keep recipes and be able to taste products they make.

CONTENT

FBPRBK3009 PRODUCE BISCUIT AND COOKIE PRODUCTS

FBPRBK3004 PRODUCE MERINGUE PRODUCTS



CERTIFICATE II IN FOOD PROCESSING – SPECIALISING IN BAKING

NATIONAL CODE FBP20122

This qualification provides a great introduction to baking, covering basic problem solving and production skills, routine baking functions, with customer service, general preparation and cleaning skills. Hands on practical skills will be learnt to produce a wide range of bakery products, covering breads, cakes and pastries. Products made include sandwich bread, finger buns, donuts, apple pies, pasties, meat pies, sponges, fruit cakes, mud cakes and muffins.

This course is a great stepping stone for those budding bakers, at home or looking to gain an apprenticeship.

COURSE TYPE

Flexible Industry Pathway, suitable for Year 11 students.

COURSE DELIVERY

1 day per week over 33 weeks.

DAY, TIME & DATES

TAFE SA Regency (Tuesday),
Birdwood High (Wednesday),
Playford International College (Thursday),
times to be confirmed.

RECOMMENDATION

It is recommended that students do not have a full study band at school if they wish to also study this qualification at TAFE SA.

SACE CREDITS

Students can gain up to 70 Stage 1 SACE credits on completion of this qualification, dependent on units chosen.

COURSE FEES

Subsidised co-payment \$331.50.

STUDY MODE

Classroom and simulated work environment.

INCIDENTALS

Students must have an appropriate apron and hat in accordance with WHS and Food Safety requirements. Students will have the choice of purchasing **TAFE SA apron and hat (\$25)**, OR **providing their own** OR **utilising what is available at the host school providing they meet WHS and Food Safety requirements**. For training at TAFE SA Regency, incidental cost of \$200 applies for **tools and uniform**.

SELECTION CRITERIA

Students must meet Flexible Industry Pathways eligibility criteria.

DELIVERY LOCATIONS

TAFE SA campus: Regency
Other locations: Birdwood High School,
Playford International College.



COMPETENCIES DELIVERED

Not all units listed below are offered in the part time group during normal school hours. Students will need to attend other classes to meet all the competencies.

Competencies and scheduled class time may differ from campus to campus.

UNIT NAME	NATIONAL CODE	NOMINAL HOURS
Participate in work health and safety processes	FBPWHS2001	40
Provide and apply workplace information	FBPOPR2071	30
Apply food safety procedures	FBPFSY2002	30
Follow procedures to maintain good manufacturing practice in food processing	FBPOPR2096	40

ELECTIVES		
Participate in environmentally sustainable work practices	MSMENV272	30
Use numerical applications in the workplace	FBPOPR2069	30
Freeze and thaw dough	FBPHVB2001	20
Advise on products and services	SIRXPDK001	30
Clean and sanitise equipment	FBPOPR2095	30
Prepare basic mixes	FBPOPR1012	20
Assist non-laminated pastry production	FBPRBK2001	70
Assist basic bread production	FBPRBK2004	60
Assist sponge cake production	FBPRBK2003	80

Course requires 4 core and 9 elective units to complete the qualification.

APPROX. TOTAL HOURS: 510 (DEPENDING ON UNITS)





SERVICE SUCCESS.

HOSPITALITY

CERTIFICATE II IN HOSPITALITY

NATIONAL CODE SIT20322

Training in our hospitality courses will provide you with the knowledge and skills to work within the hospitality industry, locally, nationally and internationally.

You will gain practical experience in preparation of food and beverage service as well as mastering the art of coffee service. All our courses are taught by highly qualified industry professionals supported by real hospitality experiences in our campus cafés or restaurants.

COURSE TYPE

Flexible Industry Pathway, suitable for Year 11 students.

COURSE DELIVERY

1 day per week over 30 weeks (180 classroom hours).

Please note: may vary by campus.

- > Directed study hours (non-contact, including self-paced learning activities, research, completing student tasks) approx. 4 hours per week.
- > This qualification requires the student to complete a minimum of 12 service periods in a simulated industry environment or industry workplace. A logbook is required to be completed for evidence. Check with your campus how these 12 service periods will be achieved.

DAY, TIME & DATES

Units listed may not all be delivered during school hours.

RECOMMENDATION

It is recommended that students do not have a full study band at school if they wish to also study this qualification at TAFE SA.

SACE CREDITS

Students can gain between 40-45 Stage 1 SACE credits on completion of this qualification, dependent on units chosen.

COURSE FEES

Subsidised co-payment \$193.05 - \$212.55.

STUDY MODE

Classroom, simulated work environment on site.

INCIDENTALS

There is a \$10 incidental fee for this course which covers the provision of **TAFE SA name badge**. It is also suggested that students purchase a long sleeve business shirt (check with your campus if this is black or white), black work pants and black shoes. Students may also be required to purchase a **Waiters Friend** tool (approx. \$13).

SELECTION CRITERIA

Students must meet Flexible Industry Pathways eligibility criteria.

DELIVERY LOCATIONS

TAFE SA campuses: Barossa, Berri, Mount Barker, Mount Gambier, Noarlunga, Pt Lincoln, Regency.

Other locations: onsite at schools (approved inspection required).

COMPETENCIES DELIVERED

Not all units listed below are offered in the part time group during normal school hours. Students will need to attend other classes to meet all the competencies.

Competencies and scheduled class time may differ from campus to campus.

UNIT NAME	NATIONAL CODE	NOMINAL HOURS
Work effectively with others	BSBTWK201	40
Source and use information on the hospitality industry	SITHIND006	25
Interact with customers	SITXCCS011	20
Show social and cultural sensitivity	SITXCOM007	20
Participate in safe work practices	SITXWHS005	12
Use hospitality skills effectively	SITHIND007	10

ELECTIVES

Use hygienic practices for food safety	SITXFSA005	15
Serve food and beverage	SITHFAB027	80
Prepare and serve non-alcoholic beverages	SITHFAB024	20
Provide responsible service of alcohol	SITHFAB021	10
Clean and tidy bar areas	SITHFAB022	15
Prepare and serve espresso coffee	SITHFAB025	30

This course requires 6 core and 6 elective units, other units by negotiation.

APPROX. TOTAL HOURS: 297-327 (DEPENDENT ON UNITS CHOSEN)

INTRODUCTION TO BARISTA

STACKABLE VET

5 STAGE 1 SACE CREDITS

COST \$376

DURATION 4 DAYS

NOMINAL HOURS 45

DELIVERY LOCATIONS

TAFE SA CAMPUSES: BAROSSA, BERRI, MOUNT BARKER, MOUNT GAMBIER, NOARLUNGA, PORT LINCOLN, PORT PIRIE, REGENCY, WHYALLA

This course provides students with the skills to prepare and serve espresso coffee and use hygienic practices for food safety.

CONTENT

SITHFAB025	PREPARE AND SERVE ESPRESSO COFFEE
SITXFSA005	USE HYGIENIC PRACTICES FOR FOOD SAFETY

COOKERY

CERTIFICATE II IN COOKERY

NATIONAL CODE SIT20421

This qualification is the pathway to commercial cookery. Certificate II in Cookery (SIT20421) is an introductory qualification and reflects the role of individuals working in kitchens who use a defined range of food preparation and cookery skills.

COURSE TYPE

Flexible Industry Pathway, suitable for Year 11 students.

COURSE DELIVERY

1 day per week over 35 weeks.
May vary per campus.

DAY, TIME & DATES

Day and times vary from location to location.

RECOMMENDATION

It is recommended that students do not have a full study band at school if they wish to also study this qualification at TAFE SA.

SACE CREDITS

Students can gain up to 55 Stage 1 SACE credits on completion of this qualification, dependent on units chosen.

COURSE FEES

Subsidised co-payment \$266.50.

STUDY MODE

Kitchen, classroom and simulated work environment.

INCIDENTALS

Students undertaking Certificate II in Cookery are required to wear a Commercial Cookery uniform: **traditional chef trousers** (chequered); **white chefs jacket** (double breasted); **white 3/4 wait apron**; **white flat top (skull) cap**; **1 hairnet**; **3 tea towels**; **knives and small equipment** (approximate cost of uniform \$120).

Where possible students are asked to supply their **own knife kit** with at least a 25 cm chef's knife, 10 cm paring knife and peeler as a minimum. An approximate cost for these items will be to \$150.

Each TAFE SA campus can advise students on suppliers.

Please note: Some TAFE SA campuses will supply knives for use during class but students will need to enquire with the TAFE SA campus they are attending on what may be available as items are limited.

SELECTION CRITERIA

Students must meet Flexible Industry Pathways eligibility criteria.

DELIVERY LOCATIONS

TAFE SA campuses: Barossa, Berri, Elizabeth, Mount Gambier, Noarlunga, Port Lincoln, Port Pirie, Regency and Whyalla.

Other locations: available upon negotiation with TAFE SA, can be delivered on a school site – approved inspection required.

Some campuses may need to run classes through the school holidays to ensure the qualification is completed in the school year time frame.



FOOD GLORIOUS FOOD.



COMPETENCIES DELIVERED

All units listed are offered in the part-time group during normal school hours.
Elective units delivered are subject to change per delivery location.

UNIT NAME	NATIONAL CODE	NOMINAL HOURS
Use hygienic practices for food safety	SITXFSA005	15
Clean kitchen premises and equipment	SITHKOP009	13
Receive, store and maintain stock	SITXINV006	20
Participate in safe work practices	SITXWHS005	12
Use food preparation equipment	SITHCCC023	25
Prepare dishes using basic methods of cookery	SITHCCC027	45
Work effectively in a commercial kitchen	SITHCCC034	60

ELECTIVES

Prepare stocks, sauces and soups	SITHCCC029	35
Prepare and present simple dishes	SITHCCC024	25
Prepare appetisers and salads	SITHCCC028	25
Prepare Asian appetisers and snacks	SITHASC021	45
Prepare vegetable, fruit, egg and farinaceous dishes	SITHCCC030	50
Participate in safe food handling practices	SITXFSA006	40

This course requires 7 core and 6 elective units.

APPROX. TOTAL HOURS: 410

IT

Set yourself up to provide IT support in a broad choice of organisational settings with a high-level working knowledge of systems including hardware, software, networking, security, database management and troubleshooting.

CERTIFICATE III IN INFORMATION TECHNOLOGY

NATIONAL CODE ICT30120

Develop technical skills in software application, cyber awareness, digital media, generalist IT support services, networking, programming, systems and web development. Throughout this course you will also build industry essential skills that are transferable across multiple sectors. Skills such as critical thinking, problem solving, presenting and customer service to support a range of technologies, processes, policies and clients. This course also offers a pathway to future study, including:

- > Certificate IV in Information Technology (ICT40120)
(Systems Administration Support), (Networking), (Programming),
(Web Development), (Cyber Security – 22603VIC)
- > Diploma of Information Technology (ICT50220),
(System Administration Support & Cloud Engineering),
(Advanced Networking & Cloud Engineering),
(Advanced Programming), (Back End Web Development),
(Cyber Security)

COURSE TYPE

Flexible Industry Pathway, suitable for Year 11 students.

COURSE DELIVERY

1 day per week over 12-18 months (37 or 46 weeks). The 12-18 months delivery will include a minimum of 6 hours of contact per week, plus an expectation of another 6 hours of self-study time.

DAY, TIME & DATES

Students can either attend TAFE SA for one day a week release for classroom led courses.

Schools would be expected to make sure students have time to adequately study the material and have appropriate staff available for support.

Schools can augment the TAFE SA delivery as they see fit for their cohort of student and timetables etc.

Students coming in Mid-Year can start with Semester 2 schedule followed by Semester 1, then Semester 3.

Face-to-face classes only at TAFE SA Elizabeth, Adelaide City, Berri and Mount Barker campuses. Online classes are available also.

SACE CREDITS

Students can gain a maximum of 65 Stage 2 SACE credits on completion of this qualification, dependent on units chosen.

COURSE FEES

Subsidised co-payment \$1296.

STUDY MODE

Campus or online.

INCIDENTALS

This course also has an incidentals cost of approx. \$300 for **1TB SSD portable hard drive, webcam** (required for online students only) and **headset with microphone** which students must purchase themselves prior to course commencement.

SELECTION CRITERIA

Students must meet Flexible Industry Pathways eligibility criteria.

DELIVERY LOCATIONS

TAFE SA campuses: Adelaide City, Berri, Elizabeth, Mount Gambier.

Other locations: onsite (pending site visit) and online delivery available upon negotiation with TAFE SA.



COMPETENCIES DELIVERED

Competencies and scheduled class time may differ from campus to campus.

UNIT NAME	NATIONAL CODE	NOMINAL HOURS
Develop and extend critical and creative thinking skills	BSBCRT301	40
Securely manage personally identifiable information and workplace information	BSBXCS303	40
Work in a team	BSBXTW301	40
Identify IP, ethics and privacy policies in ICT environments	ICTICT313	50
Apply introductory programming techniques	ICTPRG302	40
Provide ICT advice to clients	ICTSAS305	40

ELECTIVES

Operate application software packages	ICTICT214	60
Identify and report online security threats	BSBXCS302	30
Build simple web pages	ICTWEB304	40
Run standard diagnostic tests	ICTSAS308	20
Install and test network protocols	ICTNWK311	40
Use advanced features of applications	ICTICT312	40

Course requires 6 core and 6 elective units to complete the qualification.

APPROX. TOTAL HOURS: 480

MINING, ENGINEERING & AUTOMOTIVE

TAFE SA provides industry-leading education for the mining, engineering and automotive industries. Students will learn from industry experts as they build the skills and knowledge needed by industry.

AUTOMOTIVE

CERTIFICATE II IN AUTOMOTIVE SERVICING TECHNOLOGY

NATIONAL CODE AUR20520

Get the skills to identify, inspect and service the mechanical and electrical components as may be found in light and heavy vehicles, outdoor power equipment, bicycles, marine craft and motorcycles. This entry-level qualification is designed to help you build a foundation of basic knowledge to help you prepare for a career in the automotive industry.

COURSE TYPE

Flexible Industry Pathway, suitable for Year 11 students.

COURSE DELIVERY

1 day per week over 3-4 semesters (up to 65 weeks depending on location). Block delivery available at some sites.

DAY, TIME & DATES

Intakes commence in Semester 1 each year, mid-year may be negotiated. Dates and times vary between locations.

RECOMMENDATION

Delivery hours may vary depending on the elective units undertaken.

SACE CREDITS

Students can gain up to 50 Stage 2 SACE credits on completion of this qualification, dependent on units chosen.

COURSE FEES

Subsidised co-payment \$273.

INCIDENTALS

Students must have the following Personal Protective Equipment (that students must organise themselves approx. \$150) including: **Long sleeve hi-vis shirt, Long pants, Steel capped boots, Clear safety glasses.**

STUDY MODE

Classroom, online and workshop.

SELECTION CRITERIA

Students must meet Flexible Industry Pathways eligibility criteria.

DELIVERY LOCATIONS

TAFE SA campuses: Barossa, Berri, Elizabeth, Kadina, Noarlunga, Port Augusta, Port Lincoln, Port Pirie, Whyalla.

Other locations: Eastern Fleurieu School, Horizon College (Balaklava), Playford College, Riverton and District School, Western Technical College. Delivery at school sites can be negotiated with TAFE SA, post site inspection.



COMPETENCIES DELIVERED

Competencies and scheduled class time may differ from campus to campus.

UNIT NAME	NATIONAL CODE	NOMINAL HOURS
Follow environmental and sustainability best practice in an automotive workplace	AURAEA002	25
Follow safe working practices in an automotive workplace	AURASA102	20
Identify basic automotive faults using troubleshooting processes	AURATA001	20
Inspect, test and service batteries	AURETR115	10
Carry out servicing operations	AURTTA104	20
Inspect and service braking systems	AURTTB101	20
Inspect and service cooling systems	AURTTTC001	10
Inspect and service steering systems	AURTTD002	10
Inspect and service suspension systems	AURTTD004	10
Inspect and service engines	AURTTE104	20
Use and maintain tools and equipment in an automotive workplace	AURTTK102	20
Inspect and service final drive assemblies	AURTTQ001	5
Inspect and service drive shafts	AURTTQ103	5

ELECTIVES

Select and supply automotive parts and products	AURSCA101	100
Remove, inspect and refit light vehicle wheel and tyre assemblies	AURLTJ113	20
Inspect and service petrol fuel systems	AURTTF101	25
Balance wheels and tyres	AURTTJ011	10
Inspect and service manual transmissions	AURTTX002	10
Remove, inspect, repair and refit light vehicle tyres and tubes	AURLTJ102	40
Communicate effectively in an automotive workplace	AURAF103	20

Course requires 13 core and 7 elective units, other elective units may be offered across different campuses.

APPROX. TOTAL HOURS: 420 (DEPENDING ON UNITS)

ENGINEERING

CERTIFICATE II IN ENGINEERING PATHWAYS

NATIONAL CODE MEM20422

This qualification delivers broad-based underpinning skills and knowledge in a range of engineering and manufacturing tasks which will enhance the graduates' entry-level employment prospects for apprenticeships, traineeships or general employment in an engineering-related workplace.

COURSE TYPE

Flexible Industry Pathway, suitable for Year 11 students.

COURSE DELIVERY

1 day per week over 35 weeks.
Additional homework is required to manage the online components to complete the qualification (approx. 104 hours).

DAY, TIME & DATES

1 day a week from 8.30am-3.00pm.
Day and times vary from location to location.

SACE CREDITS

Students can gain between 50-60 Stage 1 SACE credits on completion of this qualification, dependent on units chosen.

COURSE FEES

Subsidised co-payment \$247 - \$266.50.

INCIDENTALS

Students must have the following Personal Protective Equipment (that students must organise themselves approx. \$150) including: **Long sleeve hi-vis shirt; Long pants; Steel capped boots; Clear safety glasses; Riggers gloves** (approx. \$5-\$10); **Welding gloves** (approx. \$8-\$25); **Welding Helmet (PAPR)**. A **powered air purifying respirator (PAPR)** is required as TAFE SA regard these as the primary risk control for protection from welding fumes. The helmet must have a minimum shade 10 lens. Schools can purchase these or enquire to TAFE SA as to whether the campus will have PAPR's available to borrow. When training is conducted at locations other than a TAFE SA campus, additional costs may apply. For further information contact TAFE SA on 1800 882 661.

STUDY MODE

Classroom and simulated work environment onsite.

SELECTION CRITERIA

Students must meet Flexible Industry Pathways eligibility criteria.

DELIVERY LOCATIONS

TAFE SA campuses: Barossa, Berri, Elizabeth, Mount Gambier, Murray Bridge, Port Pirie, Whyalla.

Other locations: Findon Technical College, Western Technical College, and onsite by negotiation.





**BUILD
YOUR
FUTURE.**

COMPETENCIES DELIVERED

Competencies and scheduled class time may differ from campus to campus.

UNIT NAME	NATIONAL CODE	NOMINAL HOURS
Work safely and effectively in manufacturing and engineering	MEM13015	40
Develop a career plan for the engineering and manufacturing industries	MEMPE005	20
Undertake a basic engineering project	MEMPE006	80
Participate in environmentally sustainable work practices	MSMENV272	30
Undertake manual handling	MEM11011	20
Organise and communicate information	MEM16006	20
Interact with computing technology	MEM16008	20
Use hand tools	MEM18001	20
Use power tools/hand held operations	MEM18002	20
Use electric welding machines	MEMPE002	40
Use fabrication equipment	MEMPE004	40
ELECTIVES (ONE OF THE FOLLOWING ONLY)		
Adapt to work in industry	MSMPC101	30
Work in a team	MSMSUP106	30

APPROX. TOTAL HOURS: 380-410 (DEPENDING ON UNITS)

CERTIFICATE II IN RESOURCES AND INFRASTRUCTURE WORK PREPARATION

NATIONAL CODE RII20120

This qualification reflects the roles of individuals who perform mainly routine tasks and procedures, using limited practical skills and fundamental operational knowledge, and taking some responsibility for the quality of the work outcomes.

This Certificate II in Resources and Infrastructure Work Preparation is a pathway qualification and will prepare an individual to successfully undertake a sector specified Certificate III from the Resources and Infrastructure Industry.

COURSE DELIVERY

1 day per week over 36 weeks.
Additional homework is required to manage the online components to complete the qualification (approx. 1 hour per unit).

DAY, TIME & DATES

One day a week from 9.00am-3.00pm.
Day and times vary from location to location.

PACKAGING RULES

Total number of units = 9
4 core units plus 5 elective units of which:

- > At least three (3) must be chosen from Group A
- > No more than two (2) may be chosen from Group B
- > No more than one (1) unit may be chosen from elsewhere within this training package, or from another endorsed training package, or from an accredited course.

Elective units must be relevant to the work environment and the qualification, maintain the overall integrity of the Australian Qualifications Framework alignment and contribute to a valid vocational outcome.

There is one prerequisite in the imported units listed in this qualification. Where a unit is imported as an elective care must be taken to ensure that all prerequisites specified are complied with.

SACE CREDITS

Students can gain up to 35 Stage 1 SACE credits on completion of this qualification, dependent on units chosen.

COURSE FEES

Subsidised co-payment \$195.

STUDY MODE

Classroom and simulated work environment onsite.

INCIDENTALS

Students must have the following Personal Protective Equipment (that students must organise themselves approx. \$150) including: **steel caps boots, hi-vis vest, long trousers.**

SELECTION CRITERIA

Students must meet Flexible Industry Pathways eligibility criteria.

DELIVERY LOCATIONS

TAFE SA campuses: Barossa, Berri, Elizabeth, Mount Gambier, Murray Bridge, Port Pirie, Whyalla.

Other locations: Western Technical College, and onsite by negotiation.



COMPETENCIES DELIVERED

Competencies and scheduled class time may differ from campus to campus.

UNIT NAME	NATIONAL CODE	NOMINAL HOURS
Communicate in the workplace	RIICOM201E	20
Identify and assess environmental and heritage concerns	RIIENV201E	20
Conduct local risk control	RIIRIS201E	20
Work safely and follow WHS policies and procedures	RIIWHS201E	20
ELECTIVES - GROUP A		
Isolate and access plant	RIISAM202E	30
Use hand and power tools	RIISAM203E	80
Carry out measurements and calculations	RIICCM201E	20
ELECTIVES - GROUP B		
Plan and organise work	RIIBEF201E	20
Comply with site work processes/procedures	RIIGOV201E	20
Enter and work in confined spaces	RIIWHS202E	30
Work safely at heights	RIIWHS204E	20

APPROX. TOTAL HOURS: 300



**EXPLORE
AND
PROCESS.**

MINING, ENGINEERING & AUTOMOTIVE

TAFE SA VET FOR SECONDARY STUDENTS 2025

PRIMARY INDUSTRIES & SCIENCE

Work with animals and plants, on the land or in the lab. TAFE SA primary industries and science courses can lead to careers in animal or veterinary care, laboratory technology or conservation and natural resource management.

AGRICULTURE

CERTIFICATE II IN AGRICULTURE

NATIONAL CODE AHC20116

Develop the skills needed to gain an entry level role in agriculture or go on to further study in the field. You will learn key skills in a number of agricultural industries, including livestock production and/or cropping. Students are able to pathway to the Certificate III in Agriculture (AHC30116), which has higher levels of livestock health and welfare.

COURSE TYPE

Flexible Industry Pathway, suitable for Year 11 students.

COURSE DELIVERY

1 day per week over 18 months (51 weeks).

DAY, TIME & DATES

Part-time: various locations, day and times vary (rolling intake students must be enrolled at least 1 week prior to commencement of unit to be undertaken).

RECOMMENDATION

It is recommended that students do not have a full study band at school if they wish to also study this qualification at TAFE SA.

SACE CREDITS

Students can gain between 80-85 Stage 1 SACE credits on completion of this qualification, dependant on units chosen.

COURSE FEES

Subsidised co-payment \$364 - \$406.25.

STUDY MODE

Classroom and access to a working farm with appropriate facilities to complete the practical requirements for each competency.

INCIDENTALS

This course has an incidentals fee of \$45 which covers the following: **Ear muffs; Riggers gloves; Spray suit; Nitrile gloves; Safety glasses.** Students must have the following Personal Protective Equipment (that students must organise themselves approx. \$100) including: **Long pants; Steel capped boots; Sun protection (hat); Long sleeve shirt.**

SELECTION CRITERIA

Students must meet Flexible Industry Pathways eligibility criteria.

DELIVERY LOCATIONS

TAFE SA campuses: Barossa, Mount Gambier, Port Lincoln.

Other locations: onsite and other locations by negotiation.



COMPETENCIES DELIVERED

Not all units listed below are offered in the part-time group during normal school hours. Students may need to attend other classes to meet all the competencies.

Note: This qualification is in transition and will change slightly and unit selection may differ.

UNIT NAME	NATIONAL CODE	NOMINAL HOURS
Participate in work health and safety processes	AHCWHS201	20
Participate in environmentally sustainable work practices	AHCWRK209	20
Work effectively in the industry	AHCWRK204	20

ELECTIVES

Apply chemicals under supervision	AHCCHM201	30
Install, maintain and repair farm fencing	AHCINF202	30
Carry out regular livestock observation	AHCLSK204	40
Handle livestock using basic techniques	AHCLSK205	30
Identify and mark livestock	AHCLSK206	20
Monitor water supplies	AHCLSK209	20
Muster and move livestock	AHCLSK210	25
Provide feed for livestock	AHCLSK211	30
Identify and draft livestock	AHCLSK308	40
Operate basic machinery and equipment	AHCMOM203	20
Operate and maintain chainsaws	AHCMOM213	40
Operate quad bikes	AHCMOM217	60
Treat weeds	AHCPMG201	40
Observe and report on weather	AHCWRK201	25
Care for health and welfare of livestock	AHCLSK202	40

Course requires 3 core and 15 elective units to complete qualification, other units by negotiation.

APPROX. TOTAL HOURS: 560-625 DEPENDING ON UNITS

INTRODUCTION TO ANIMAL HUSBANDRY (LIVESTOCK)

STACKABLE VET
10 STAGE 1 SACE CREDITS

COST \$455

DURATION 6 DAYS (BLOCK DELIVERY)

NOMINAL HOURS 70

DELIVERY LOCATION TAFE SA CAMPUS: MOUNT GAMBIER

CONDITIONS BLOCK DELIVERY (6 DAYS X 6 HOURS). STUDENTS NEED STEEL-CAPPED WORK BOOTS, HAT, SUNGLASSES, LONG PANTS, LONG SHIRT - STUDENT TO SUPPLY. ABIDE BY TAFE SA BIO SECURITY PROCESSES (SCRUB IN, SCRUB OUT, FILL OUT PAPERWORK) TO AVOID CROSS CONTAMINATION

Students will gain skills in handling and caring for the health and welfare of livestock.

CONTENT

AHCLSK205 HANDLE LIVESTOCK USING BASIC TECHNIQUES

AHCLSK202 CARE FOR HEALTH AND WELFARE OF LIVESTOCK

ADVANCED CHEMICALS

STACKABLE VET
20 STAGE 2 SACE CREDITS

COST \$910

DURATION 8 DAYS (CLUSTERED DELIVERY) 6 HOURS HOMEWORK AND 6 HOURS VIRTUAL CLASSROOM

NOMINAL HOURS 140

DELIVERY LOCATIONS

TAFE SA CAMPUSES: BAROSSA, MOUNT GAMBIER, URRBRAE

Students will gain skills in preparing and applying chemicals to control pest, weeds and diseases.

CONTENT

AHCCHM307 PREPARE AND APPLY CHEMICALS TO CONTROL PEST, WEEDS AND DISEASES

AHCPMG301 CONTROL WEEDS

CERTIFICATE III IN AGRICULTURE

NATIONAL CODE AHC30116

Gain essential knowledge and skills to work in the agriculture industry, from livestock breeding and animal health and nutrition, to establishing pastures and crop harvesting. You'll also learn how to operate and maintain machinery and develop skills in building stock fences and more. Job roles within the agriculture sector range from farmhands, farm business managers and numerous agricultural service roles. The Certificate III also serves as a pathway for further learning.

COURSE TYPE

Flexible Industry Pathway, suitable for Year 11 students.

COURSE DELIVERY

1 day per week over 18 months (51 weeks).

CONTACT

Theory: 170 hours
Practical: 350 hours

DAY, TIME & DATES

Part-time day: various locations, day and times vary (rolling intake students must be enrolled at least 1 week prior to commencement of unit to be undertaken).

RECOMMENDATION

It is recommended that students do not have a full study band at school if they wish to also study this qualification at TAFE SA.

SACE CREDITS

Students can gain between 105-120 Stage 2 SACE credits on completion of this qualification, dependent on units chosen.

COURSE FEES

Subsidised co-payment \$1998-\$2268.

STUDY MODE

Classroom and access to a working farm with appropriate facilities to complete the practical requirements for each competency.

INCIDENTALS

This course has an incidentals fee of \$45 which covers the following: **Ear muffs; Riggers gloves; Spray suit; Nitrile gloves; Safety glasses.** Students must have the following Personal Protective Equipment (that students must organise themselves approx. \$100) including: **Long pants; Steel capped boots; Sun protection (hat); Long sleeve shirt.**

SELECTION CRITERIA

Students must meet Flexible Industry Pathways eligibility criteria.

DELIVERY LOCATIONS

TAFE SA campuses: Barossa, Mount Gambier, Mount Compass, Port Lincoln.

Other locations: enquiries from other locations welcome.



COMPETENCIES DELIVERED

Not all units listed below are offered in the part-time group during normal school hours. Students may need to attend other classes to meet all the competencies.

Note: This qualification is in transition and will change slightly and unit selection may differ.

UNIT NAME	NATIONAL CODE	NOMINAL HOURS
Contribute to work health and safety processes	AHCWHS301	50
Apply environmentally sustainable work practices	AHCWRK309	50
ELECTIVES		
Implement animal health control programs	AHCLSK309	50
Administer medication to livestock	AHCLSK301	80
Identify and draft livestock	AHCLSK308	40
Care for health and welfare of livestock	AHCLSK202	40
Plan and construct conventional fencing	AHCINF303	60
Plan and construct an electric fence	AHCINF302	60
Prepare and apply chemicals to control pest, weeds and diseases	AHCCHM307	70
Transport and store chemicals	AHCCHM304	50
Work effectively in the industry	AHCWRK204	20
Carry out regular livestock observation	AHCLSK204	40
Operate quad bikes	AHCMOM217	60
Monitor water supplies	AHCLSK209	20
Identify and mark livestock	AHCLSK206	20
Provide feed for livestock	AHCLSK211	30

Course requires 2 core and 14 elective units to complete qualification, other units by negotiation.

APPROX. TOTAL HOURS: 740-840 DEPENDING ON UNITS

PRIMARY INDUSTRIES & SCIENCE

TAFE SA VET FOR SECONDARY STUDENTS 2025

ANIMAL CARE

INTRODUCTION TO VETERINARY NURSING

STACKABLE VET

10 STAGE 1 SACE CREDITS

COST \$320

DURATION 8 DAYS

NOMINAL HOURS 80

DELIVERY LOCATION

TAFE SA CAMPUS: GILLES PLAINS

This course assists students in developing the skills and knowledge required to perform basic handling and restraint procedures; general health checks; and administration of health care treatments, on multiple animal species.

In addition, students will learn how to source and provide information on specific animal products and services, to team members or clients.

CONTENT

- ACMGEN204 ASSIST IN HEALTH CARE OF ANIMALS
- ACMGEN205 SOURCE AND PROVIDE INFORMATION FOR ANIMAL CARE NEEDS

ADVANCED ANIMAL CARE 1

STACKABLE VET

20 STAGE 2 SACE CREDITS

COST \$560

DURATION 12 DAYS

NOMINAL HOURS 140

DELIVERY LOCATION

TAFE SA CAMPUS: GILLES PLAINS

This course assists students in developing the skills and knowledge required to identify behaviours and interact safely with animals, undertake basic animal first aid and promote positive wellbeing in animal care workplaces. Students will work with multiple animal species.

Certificate II in Animal Care is a preferred pre-requisite for this course.

CONTENT

- ACMBEH301 IDENTIFY BEHAVIOURS AND INTERACT SAFELY WITH ANIMALS
- ACMGEN304 PROMOTE POSITIVE WELLBEING IN SELF AND OTHERS IN ANIMAL CARE WORKPLACES
- ACMGEN309 PROVIDE BASIC ANIMAL FIRST AID

ADVANCED ANIMAL CARE 2

STACKABLE VET

20 STAGE 2 SACE CREDITS

COST \$560

DURATION 12 DAYS

NOMINAL HOURS 140

DELIVERY LOCATION

TAFE SA CAMPUS: GILLES PLAINS

This course assists students in developing the skills and knowledge required to communicate effectively in an animal care workplace, understand and comply with infection control policies and procedures and contribute to work health and safety in an animal care workplace. Students will work with multiple animal species.

Certificate II in Animal Care is a preferred pre-requisite for this course.

CONTENT

- ACMGEN315 COMMUNICATE EFFECTIVELY WITH CLIENTS AND TEAM MEMBERS
- ACMINF301 COMPLY WITH INFECTION CONTROL POLICIES AND PROCEDURES IN ANIMAL CARE WORK
- ACMWH301 CONTRIBUTE TO WORKPLACE HEALTH AND SAFETY PROCESSES



CERTIFICATE II IN ANIMAL CARE

NATIONAL CODE ACM20121

This is a practical-based, industry-valued qualification for students wanting an entry level pathway into the animal care industry. Students will gain experience in handling multiple species of animals and undertaking various animal husbandry tasks, in a practical animal care environment.

This qualification is also the pre-requisite to the Certificate IV in Veterinary Nursing.

COURSE TYPE

Flexible Industry Pathway, suitable for Year 11 students.

COURSE DELIVERY

1 day per week over a 13 weeks plus 78 hours compulsory online delivery over 14 weeks. 2 intakes per year (Semester 1 and Semester 2).

SACE CREDITS

Students can gain up to 55 Stage 1 SACE credits on completion of this qualification, dependent on units chosen.

COURSE FEES

Subsidised under VFSS approx. \$260. Fees are payable at the beginning of each semester.

STUDY MODE

Blended: Online with virtual classrooms and on-campus practical workshops.

INCIDENTALS

There is an incidental fee of \$35 that includes a **scrub top and PPE**.

SELECTION CRITERIA

Students must meet Flexible Industry Pathways eligibility criteria.

DELIVERY LOCATION

TAFE SA campus: Gilles Plains.

COMPETENCIES DELIVERED

UNIT NAME	NATIONAL CODE	NOMINAL HOURS
Work in the animal care industry	ACMGEN201	30
Complete animal care hygiene routines	ACMGEN202	30
Feed and water animals	ACMGEN203	40
Assist in health care of animals	ACMGEN204	40
Participate in environmentally sustainable work practices	ACMSUS201	20
Participate in workplace health and safety processes	ACMWHS201	40
Apply communication skills	BSBCMM211	40
ELECTIVES		
Provide enrichment for animals	ACMBEH302	40
Source and provide information for animal care needs	ACMGEN205	40
Provide basic animal first aid	ACMGEN309	40
Explore job opportunities in animal care and related industries	ACMGEN101	10
Provide reception services for an animal care facility	ACMGEN310	30

Course requires 7 core and 5 elective units to complete qualification, other units by negotiation.

APPROX. TOTAL HOURS: 400 DEPENDING ON UNITS

AQUACULTURE

CERTIFICATE II IN AQUACULTURE

NATIONAL CODE SFI20119

Develop the skills and knowledge to work in the Aquaculture and Seafood industry. With a focus on hands-on, practical learning in a real Aquaculture facility, you will develop skills in feeding, handling and growing stock, disease management, harvesting, filleting and food hygiene, operating and maintaining aquaculture systems, as well as safe work practices, teamwork and effectively communicating in the seafood industry. The Certificate II in Aquaculture (SFI20119) has a strong focus on developing basic aquaculture knowledge and skills whilst providing additional training in elements of shipboard safety.

COURSE TYPE

Flexible Industry Pathway, suitable for Year 11 students.

COURSE DELIVERY

12 months delivery.
Blended methodology with online facilitated delivery and timetabled intensive blocks (4 blocks of 5 days) for skills acquisition and assessments.

COURSE FEES

Subsidised co-payment \$195.

SACE CREDITS

Students can gain between 40-45 Stage 1 SACE credits on completion of this qualification, dependent on units chosen.

INCIDENTALS

Desirable for students to purchase full Personal Protective Equipment (that students must organise themselves approx. \$100) including: **enclosed shoes and gum boots.**

STUDY MODE

Classroom/simulated work environment onsite.

SELECTION CRITERIA

Students must meet Flexible Industry Pathways eligibility criteria.

DELIVERY LOCATIONS

TAFE SA campuses: Ceduna, Cowell, Kangaroo Island, Port Lincoln.

COMPETENCIES DELIVERED

UNIT NAME	NATIONAL CODE	NOMINAL HOURS
Handle stock	SFIAQU202	15
Inspect and clean aquatic work equipment	SFIBIO201	30
Meet workplace health and safety requirements	SFIWHS201	30
Communicate in the seafood industry	SFIXSI102	30
Work effectively in the seafood industry	SFIXSI201	30

ELECTIVES

Harvest cultured or held stock	SFIAQU210	15
Feed stock	SFIAQU217	20
Apply basic food handling and safety practices	SFIXSI101	20
Apply basic survival skills in the event of vessel abandonment	MARF027	35
Follow procedures to minimise and fight fires on board a vessel	MARF028	30
Meet work health and safety requirements	MARF029	30
Survive at sea using survival craft	MARF030	15

Course requires 5 core and 7 elective units to complete qualification, other units by negotiation.

APPROX. TOTAL HOURS: 300 DEPENDING ON UNITS

HORTICULTURE

INTRODUCTION TO HORTICULTURE – PLANT PROPAGATION

STACKABLE VET

10 STAGE 1 SACE CREDITS

COST \$520

DURATION 6 DAYS AND 6 HOURS HOMEWORK

NOMINAL HOURS 80

DELIVERY LOCATIONS TAFE SA CAMPUSES:

BAROSSA, MOUNT GAMBIER, URRBRAE

OTHER LOCATIONS: AVAILABLE AT SCHOOL

SITES BY NEGOTIATION, MUST HAVE A NURSERY

Students will gain skills in propagation and assisting with soil sampling and testing.

CONTENT

AHCWHS201	PARTICIPATE IN WORK HEALTH AND SAFETY PRACTICES
AHCNSY207	UNDERTAKE PROPAGATION ACTIVITIES
AHCSOL203	ASSIST WITH SOIL OR GROWING MEDIA SAMPLING AND TESTING

INTRODUCTION TO HORTICULTURE – PLANT HUSBANDRY

STACKABLE VET

10 STAGE 1 SACE CREDITS

COST \$455

DURATION 6 DAYS (CLUSTERED DELIVERY) AND 6 HOURS HOMEWORK

NOMINAL HOURS 70

DELIVERY LOCATIONS TAFE SA CAMPUSES:

BAROSSA, MOUNT GAMBIER, URRBRAE

OTHER LOCATIONS: AVAILABLE AT SCHOOL SITES BY NEGOTIATION, MUST HAVE A NURSERY

This course equips students with skills in treating weeds, plant pests, diseases and disorders.

CONTENT

AHCPMG201	TREAT WEEDS
AHCPMG202	TREAT PLANT PESTS, DISEASES AND DISORDERS



PRIMARY INDUSTRIES & SCIENCE

TAFE SA VET FOR SECONDARY STUDENTS 2025



CERTIFICATE II IN HORTICULTURE

NATIONAL CODE AHC20416

Develop skills and knowledge to work as a horticulture worker or assistant.

You will learn about planting, recognising plants, maintaining irrigation systems, pruning, treating weeds, pests and diseases, basic soil properties, renovating grassed areas, tending to nursery plants, laying paving, machinery and equipment operation and maintenance.

COURSE TYPE

Flexible Industry Pathway, suitable for Year 11 students.

COURSE DELIVERY

1 day per week over 34 weeks, depending on units undertaken.

DAY, TIME & DATES

Part-time Friday 9.00am-3.30pm (rolling intake students must be enrolled at least 1 week prior to commencement of unit to be undertaken).

RECOMMENDATION

It is recommended that students do not have a full study band at school if they wish to also study this qualification at TAFE SA.

SACE CREDITS

Students can gain between 60-70 Stage 1 SACE credits on completion of this qualification, dependent on units chosen.

COURSE FEES

Subsidised co-payment \$282.75 - \$334.75.

STUDY MODE

Classroom/simulated work environment on site.

SELECTION CRITERIA

Students must meet Flexible Industry Pathways eligibility criteria.

INCIDENTALS

This course has an incidentals fee of \$45 which covers the following: **Ear muffs; Riggers gloves; Spray suit; Nitrile gloves; Safety glasses.** Students must have the following Personal Protective Equipment (that students must organise themselves approx. \$100) including: **Long pants; Steel capped boots; Sun protection (hat); Long sleeve shirt.**

DELIVERY LOCATIONS

TAFE SA campuses: Barossa Valley, Mount Gambier, Urrbrae.



FROM LITTLE THINGS, BIG THINGS GROW.

COMPETENCIES DELIVERED

Not all units listed below are offered in the part-time group during normal school hours.

Students will need to attend evening classes to meet all the competencies.

Note: This qualification is in transition and will change slightly and unit selection may differ.

UNIT NAME	NATIONAL CODE	NOMINAL HOURS
Participate in work health and safety processes	AHCWHS201	20
Recognise plants	AHCPCM201	40
Treat weeds	AHCPMG201	40
Treat plant pests, diseases and disorders	AHCPMG202	30
Assist with soil or growing media sampling and testing	AHCSOL202	30

ELECTIVES

Operate basic machinery and equipment	AHCMOM203	20
Collect, prepare and preserve plant specimens	AHCPCM202	30
Participate in environmentally sustainable work practices	AHCWRK209	20
Care for nursery plants	AHCNSY202	30
Undertake propagation techniques	AHCNSY203	30
Plant trees and shrubs	AHCPGD201	20
Assist with pressurised irrigation operations	AHCIRG217	40
Apply chemicals under supervision	AHCCHM201	30
Prune shrubs and small trees	AHCPGD203	35
Pot up plants	AHCNSY201	20

Course requires 5 core and 10 elective units to complete qualification.

APPROX. TOTAL HOURS: 435-515 DEPENDING ON UNITS

RURAL OPERATIONS

CERTIFICATE III IN RURAL OPERATIONS

NATIONAL CODE AHC32816

Grow your career in the pastoral sector with in-depth knowledge in agriculture and animal care. Gain practical skills to operate machinery and equipment, maintain facilities and general agriculture activities, as well as the vital skills involved in animal care. The qualification allows students to select a livestock production, cropping or livestock context as a job focus or, in the case of mixed farming enterprises, both cropping and livestock.

COURSE TYPE

Flexible Industry Pathway, suitable for Year 11 students.

COURSE DELIVERY

1 day per week over 18 months
(51 weeks).

CONTACT

Theory: 170 hours
Practical: 350 hours

DAY, TIME & DATES

Part-time: various locations, day and times vary, (rolling intake students must be enrolled at least 1 week prior to commencement of unit to be undertaken).

RECOMMENDATION

It is recommended that students do not have a full study band at school if they wish to also study this qualification at TAFE SA.

SACE CREDITS

Students can gain between 95-135 Stage 2 SACE credits on completion of this qualification, dependent on units chosen.

COURSE FEES

Subsidised co-payment \$1876-\$2592.

STUDY MODE

Classroom/simulated work environment on site.

SELECTION CRITERIA

Students must meet Flexible Industry Pathways eligibility criteria.

INCIDENTALS

This course has an incidentals fee of \$45 which covers the following: **Ear muffs; Riggers gloves; Spray suit; Nitrile gloves; Safety glasses.** Students must have the following Personal Protective Equipment (that students must organise themselves approx. \$100) including: **Long pants; Steel capped boots; Sun protection (hat); Long sleeve shirt.**

DELIVERY LOCATIONS

TAFE SA campuses: Barossa, Berri, Mount Gambier, Port Lincoln.

Other locations: enquiries from other locations welcome.



COMPETENCIES DELIVERED

Note: This qualification is in transition and will change slightly and unit selection may differ.

UNIT NAME	NATIONAL CODE	NOMINAL HOURS
Contribute to work health and safety processes	AHCWHS301	50
Apply environmentally sustainable work practices	AHCWRK309	50
ELECTIVES		
Administer medication to livestock	AHCLSK301	80
Identify and draft livestock	AHCLSK308	40
Implement animal health control programs	AHCLSK309	50
Plan and construct conventional fencing	AHCINF303	60
Plan and construct an electric fence	AHCINF302	60
Prepare and apply chemicals to control pest, weeds and diseases	AHCCHM307	70
Transport and store chemicals	AHCCHM304	50
Work effectively in the industry	AHCWRK204	20
Operate tractors	AHCMOM202	40
Operate quad bikes	AHCMOM217	60
Maintain livestock water supplies	AHCLSK305	30
Provide feed for livestock	AHCLSK211	30
Handle livestock using basic techniques	AHCLSK205	30
Control weeds	AHCPMG301	70

Course requires 2 core and 14 elective units to complete qualification.

APPROX. TOTAL HOURS: 695-960 DEPENDING ON UNITS



FURTHER INFORMATION

TERMS AND CONDITIONS

- > Applications must be submitted via a VET referral form (available through your School VET coordinator).
- > For Flexible Industry Pathways Courses, students must meet the following eligibility criteria:
 - An Australian citizen or,
 - A permanent Australian resident or,
 - An eligible visa holder
 And you must be:
 Enrolled in Year 11, 12 or 13 and are 16 years of age or turning 16 years of age in the year of enrolment, and are undertaking SACE or equivalent and,
- Have relevant industry exposure, accredited training, or SACE curriculum-based project work
- Entitled to receive a subsidised place if they access and complete a maximum of: one Certificate II course, and one Certificate III course
- Undertake the VET Readiness Orientation including an upfront assessment of needs
- > For Stackable VET courses, applicants must be Year 10, 11 or 12.
- > Minimum numbers must be achieved for the course to proceed.
- > Places are limited if there are more applications than places available, applicants will be ranked by date of application.
- > Application open and closing dates apply.

DELIVERY AND ASSESSMENT

- > Delivery and assessment methodologies differ for each course.
- > Generally, delivery and assessment will involve a combination of attendance, practical and theoretical activities, and home assignments. Further information about specific course delivery and assessment can be obtained from the program contacts listed.

FEES AND PAYMENT

- > Fees for each course are listed and are correct as at April 1, 2024 and are subject to change.
- > Invoices for the full fee amount will be issued to the student's school and sent to the school VET coordinator.
- > For Flexible Industry Pathway qualifications there is no refund after 4 weeks of the course commencement.
- > For VET Stackables there is no refund after the commencement of the course.
- > An invoice will not be generated until minimum numbers for the course are confirmed.
- > For information on refunds and the criteria under which refunds can be granted, please see TAFE SA's refund policy available at tafesa.edu.au/apply-enrol/fees-payments/withdrawals-refunds

RESULTS

- > Students will be informed of results.
- > Students' results will be issued to the school through the VET coordinator at the designated resulting times.

DUTY OF CARE

- > Students who participate in any of these courses remain under the duty of care of the school.

Where possible, the program contact will liaise with the school regarding absentee students.

For any other specific queries or concerns, liaise with the program contact listed on the relevant course page.

STUDENTS RIGHTS AND RESPONSIBILITIES

- > Students and staff at TAFE SA have a right to work and study in an environment free from harassment, discrimination or threatening behaviour.
- > Students that enrol at TAFE SA must agree to accept and abide by the policies and procedures, follow the rules and regulations and participate in studies as directed by the program area.

Further details about student rights and responsibilities are available on the TAFE SA website including:

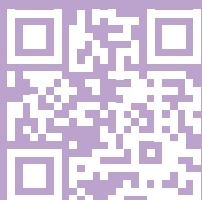
- | | |
|---------------------------|-----------------------------|
| > Access and equity | > Participation |
| > Child protection | > Plagiarism and cheating |
| > Complaints | > Racism |
| > Copyright | > Sexual harassment |
| > Discrimination | > Student code of behaviour |
| > Harassment | > Student records and |
| > Health and safety | > Vehicle regulations. |
| > Internet user agreement | |

SACE CREDITS

TAFE SA is not responsible for SACE credits. The SACE Board recognises and grants SACE credits for appropriate qualifications, subjects, courses, or learning experiences gained by local, interstate, or overseas students. The SACE Board has recognition arrangements for students undertaking vocational education and training (VET) qualifications or units of competency from VET qualifications. The SACE Board will calculate any credits for the student in accordance with the Recognition Arrangements for Vocational Education and Training (VET) in the SACE policy.

The SACE credits listed in this guide are subject to change. For the most current information on VET in SACE please visit sace.sa.edu.au/web/vet/what-is-vet/vet-in-sace.

**TAFE SA STUDENTS
LEARN JOB-READY
SKILLS FROM
INDUSTRY TRAINED,
PASSIONATE LECTURERS.
GRADUATES ARE
IN DEMAND AND
WELL PREPARED TO
START WORKING IN
THEIR CHOSEN FIELDS.**



TAFESA.EDU.AU
1800 882 661

Accurate as at April 2024.
Courses and course details listed in this guide are subject to change.

If you are a person who is Deaf, hard of hearing or have a speech impairment,
contact us through the National Relay Service relayservice.gov.au